

### Anti-ICAM1 antibody [MEM-111] ab2213

★★★★☆ [12 Abreviews](#) [72 References](#) [画像数 3](#)

#### 製品の概要

製品名	Anti-ICAM1 antibody [MEM-111]
製品の詳細	Mouse monoclonal [MEM-111] to ICAM1
由来種	Mouse
特異性	his antibody reacts with human CD54 antigen.
アプリケーション	<b>適用あり:</b> WB, Flow Cyt
種交差性	<b>交差種:</b> Human
免疫原	Tissue, cells or virus corresponding to Human ICAM1. Burkitt's lymphoma cell line RAJI
ポジティブ・コントロール	For WB it is highly recommended to use TNF-alpha activated HUVEC cells as a positive control.
特記事項	<p>The Life Science industry has been in the grips of a reproducibility crisis for a number of years. Abcam is leading the way in addressing this with our range of recombinant monoclonal antibodies and knockout edited cell lines for gold-standard validation. Please check that this product meets your needs before purchasing.</p> <p>If you have any questions, special requirements or concerns, please send us an inquiry and/or contact our Support team ahead of purchase. Recommended alternatives for this product can be found below, along with publications, customer reviews and Q&amp;As</p>

#### 製品の特性

製品の状態	Liquid
保存方法	Shipped at 4°C. Store at +4°C short term (1-2 weeks). Upon delivery aliquot. Store at -20°C or -80°C. Avoid freeze / thaw cycle.
バッファー	<p>pH: 7.40</p> <p>Preservative: 0.097% Sodium azide</p> <p>Constituent: PBS</p>
精製度	Protein A purified
ポリ/モノ	モノクローナル
クローン名	MEM-111
ミエローマ	unknown
アイソタイプ	IgG2a
軽鎖の種類	unknown

## アプリケーション

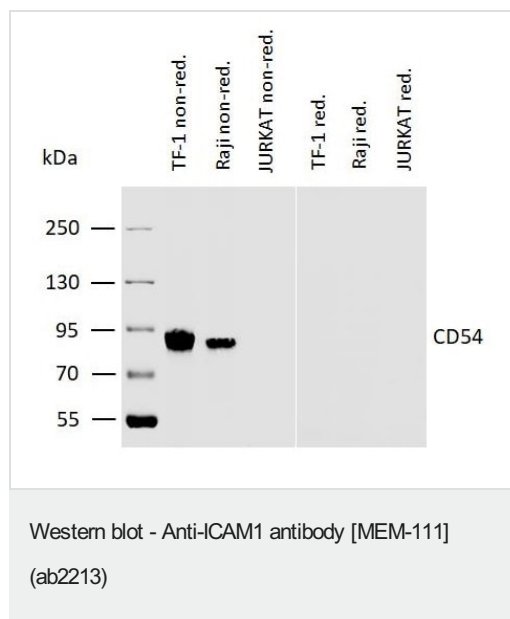
**The Abpromise guarantee**      Abpromise保証は、次のテスト済みアプリケーションにおけるab2213の使用に適用されます  
アプリケーションノートには、推奨の開始希釈率がありますが、適切な希釈率につきましてはご検討ください。

アプリケーション	Abreviews	特記事項
WB	★★★★★ (3)	Use a concentration of 1 - 2 µg/ml. Use under non-reducing conditions.
Flow Cyt	★★★★★ (3)	Use a concentration of 0.5 - 4 µg/ml.

## ターゲット情報

機能	ICAM proteins are ligands for the leukocyte adhesion protein LFA-1 (integrin alpha-L/beta-2). During leukocyte trans-endothelial migration, ICAM1 engagement promotes the assembly of endothelial apical cups through ARHGEF26/SGEF and RHOG activation. In case of rhinovirus infection acts as a cellular receptor for the virus.
配列類似性	Belongs to the immunoglobulin superfamily. ICAM family. Contains 5 Ig-like C2-type (immunoglobulin-like) domains.
翻訳後修飾	Monoubiquitinated, which is promoted by MARCH9 and leads to endocytosis.
細胞内局在	Membrane.

## 画像



**All lanes :** Anti-ICAM1 antibody [MEM-111] (ab2213) at 2 µg/ml

**Lane 1 :** TF-1 cell lysates under non-reducing condition

**Lane 2 :** Raji cell lysates under non-reducing condition

**Lane 3 :** Jurkat cell lysates under non-reducing condition

**Lane 4 :** TF-1 cell lysates under reducing condition

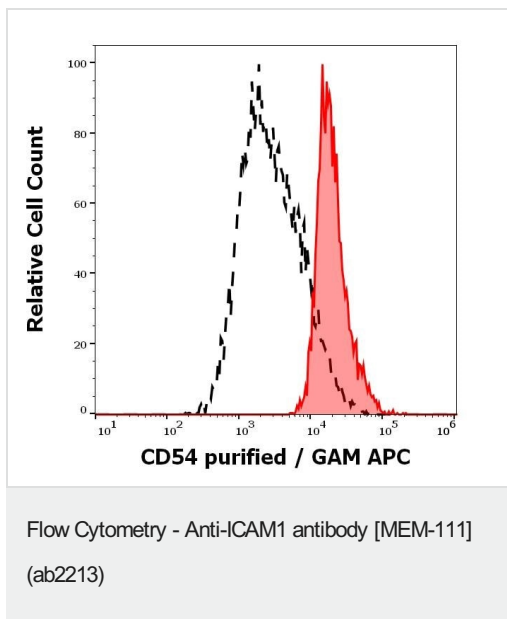
**Lane 5 :** Raji cell lysates under reducing condition

**Lane 6 :** Jurkat cell lysates under reducing condition

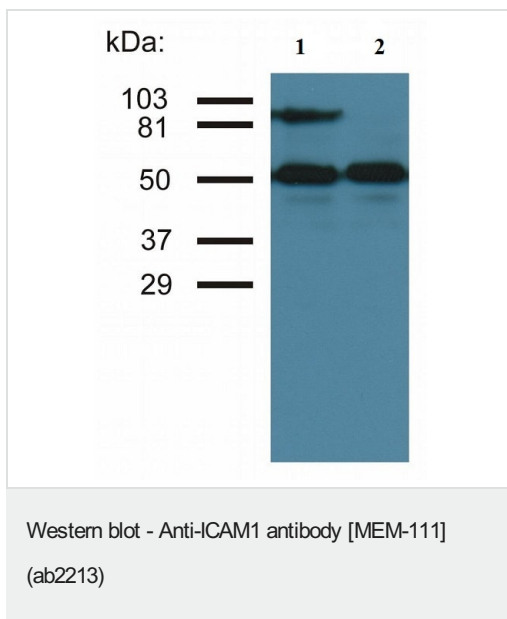
### Secondary

**All lanes :** IRDye800-conjugated anti-mouse secondary antibody

**Observed band size:** 88 kDa



Flow cytometric analysis of Human Peripheral Blood cells labelling ICAM1 with ab2213 at 0.6 ug/ml showing separation of human monocytes (red-filled) from human lymphocytes (black-dashed).



**All lanes :** Anti-ICAM1 antibody [MEM-111] (ab2213)

**Lane 1 :** TNF-alpha activated HUVEC (Human umbilical vein endothelial cell line) whole cell lysate

**Lane 2 :** TNF-alpha nonactivated HUVEC cells

Performed under non-reducing conditions.

**Observed band size:** 90 kDa

Lower bands represent tubulin as a loading control.

**Please note:** All products are "FOR RESEARCH USE ONLY. NOT FOR USE IN DIAGNOSTIC PROCEDURES"

### Our Abpromise to you: Quality guaranteed and expert technical support

- Replacement or refund for products not performing as stated on the datasheet
- Valid for 12 months from date of delivery
- Response to your inquiry within 24 hours
- We provide support in Chinese, English, French, German, Japanese and Spanish
- Extensive multi-media technical resources to help you
- We investigate all quality concerns to ensure our products perform to the highest standards

If the product does not perform as described on this datasheet, we will offer a refund or replacement. For full details of the Abpromise, please visit <https://www.abcam.co.jp/abpromise> or contact our technical team.

#### **Terms and conditions**

---

- Guarantee only valid for products bought direct from Abcam or one of our authorized distributors