

### Anti-ICAM1 antibody [EPR16608] ab179707

リコンビナント RabMAb

★★★★★ **5 Abreviews** **35 References** **画像数 5**

#### 製品の概要

製品名	Anti-ICAM1 antibody [EPR16608]
製品の詳細	Rabbit monoclonal [EPR16608] to ICAM1
由来種	Rabbit
アプリケーション	<b>適用あり:</b> IHC-P, WB
種交差性	<b>交差種:</b> Mouse
免疫原	Recombinant fragment. This information is proprietary to Abcam and/or its suppliers.
ポジティブ・コントロール	WB: Mouse spleen, liver, kidney and lung lysates; bEnd.3, A20, RAW 264.7 and WEHI-231 whole cell lysates. IHC-P: Mouse liver and kidney tissues.
特記事項	<p>This product is a recombinant monoclonal antibody, which offers several advantages including:</p> <ul style="list-style-type: none"><li>- High batch-to-batch consistency and reproducibility</li><li>- Improved sensitivity and specificity</li><li>- Long-term security of supply</li><li>- Animal-free production</li></ul> <p>For more information <a href="#">see here</a>.</p> <p>Our RabMAb<sup>®</sup> technology is a patented hybridoma-based technology for making rabbit monoclonal antibodies. For details on our patents, please refer to <a href="#">RabMAb<sup>®</sup> patents</a>.</p>

#### 製品の特性

製品の状態	Liquid
保存方法	Shipped at 4°C. Store at +4°C short term (1-2 weeks). Upon delivery aliquot. Store at -20°C long term. Avoid freeze / thaw cycle.
バッファー	Preservative: 0.01% Sodium azide Constituents: 59% PBS, 40% Glycerol, 0.05% BSA
精製度	Protein A purified
ポリ/モノ	モノクローナル
クローン名	EPR16608
アイソタイプ	IgG

## アプリケーション

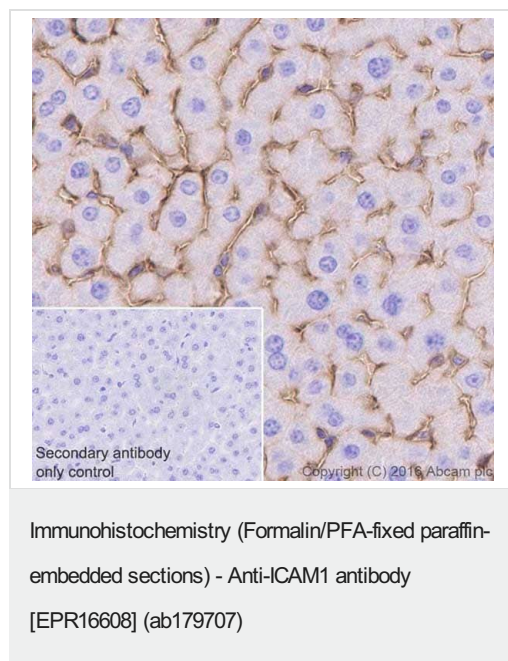
**The Abpromise guarantee** Abpromise保証は、次のテスト済みアプリケーションにおけるab179707の使用に適用されます  
アプリケーションノートには、推奨の開始希釈率がありますが、適切な希釈率につきましてはご検討ください。

アプリケーション	Abreviews	特記事項
IHC-P	★★★★★ (3)	1/2000. Perform heat mediated antigen retrieval with Tris/EDTA buffer pH 9.0 before commencing with IHC staining protocol.
WB	★★★★★ (1)	1/1000. Detects a band of approximately 80-110 kDa (predicted molecular weight: 58 kDa).

## ターゲット情報

機能	ICAM proteins are ligands for the leukocyte adhesion protein LFA-1 (integrin alpha-L/beta-2). During leukocyte trans-endothelial migration, ICAM1 engagement promotes the assembly of endothelial apical cups through ARHGEF26/SGEF and RHOG activation. In case of rhinovirus infection acts as a cellular receptor for the virus.
配列類似性	Belongs to the immunoglobulin superfamily. ICAM family. Contains 5 Ig-like C2-type (immunoglobulin-like) domains.
翻訳後修飾	Monoubiquitinated, which is promoted by MARCH9 and leads to endocytosis.
細胞内局在	Membrane.

## 画像



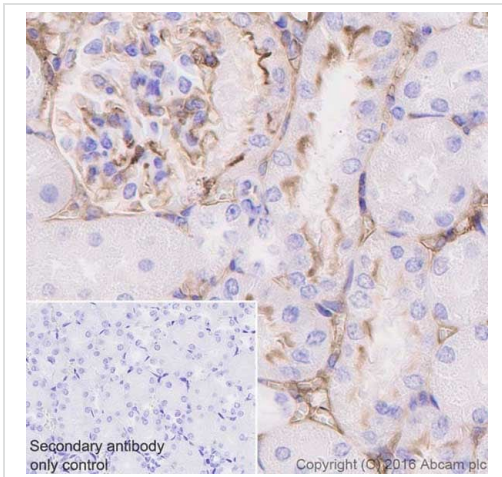
Immunohistochemical analysis of paraffin-embedded mouse liver tissue labeling ICAM1 with ab179707 at 1/2000 dilution, followed by Goat Anti-Rabbit IgG H&L (HRP) ([ab97051](#)) at 1/500 dilution.

Positive staining on endothelial cells of mouse liver is observed [PMID: 17058232].

Counter stained with Hematoxylin.

Secondary antibody only control: Used PBS instead of primary antibody, secondary antibody is Goat Anti-Rabbit IgG H&L (HRP) ([ab97051](#)) at 1/500 dilution.

Perform heat mediated antigen retrieval with Tris/EDTA buffer pH 9.0 before commencing with IHC staining protocol.



Immunohistochemistry (Formalin/PFA-fixed paraffin-embedded sections) - Anti-ICAM1 antibody [EPR16608] (ab179707)

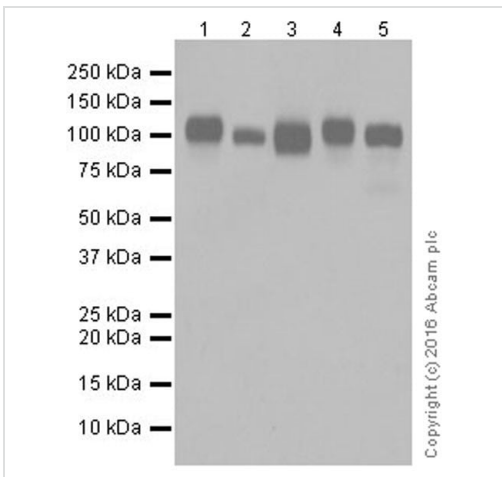
Immunohistochemical analysis of paraffin-embedded mouse kidney tissue labeling ICAM1 with ab179707 at 1/2000 dilution, followed by Goat Anti-Rabbit IgG H&L (HRP) (**ab97051**) at 1/500 dilution.

Positive staining on endothelial cells of mouse kidney is observed [PMID: 17058232].

Counter stained with Hematoxylin.

Secondary antibody only control: Used PBS instead of primary antibody, secondary antibody is Goat Anti-Rabbit IgG H&L (HRP) (**ab97051**) at 1/500 dilution.

Perform heat mediated antigen retrieval with Tris/EDTA buffer pH 9.0 before commencing with IHC staining protocol.



Western blot - Anti-ICAM1 antibody [EPR16608] (ab179707)

**All lanes** : Anti-ICAM1 antibody [EPR16608] (ab179707) at 1/1000 dilution

**Lane 1** : Mouse spleen lysate at 20 µg

**Lane 2** : Mouse liver lysate at 20 µg

**Lane 3** : Mouse kidney lysate at 20 µg

**Lane 4** : bEnd.3 (Mouse brain endothelioma cell line) whole cell lysate at 10 µg

**Lane 5** : A20 (Mouse reticulum sarcoma cell line) whole cell lysate at 10 µg

### Secondary

**All lanes** : Goat Anti-Rabbit IgG H&L (HRP) (**ab97051**) at 1/100000 dilution

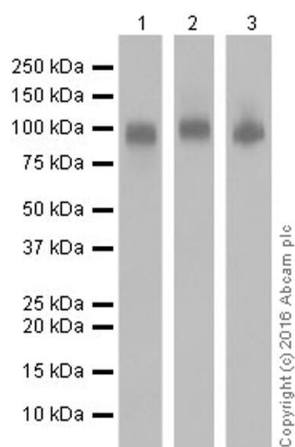
**Predicted band size:** 58 kDa

**Observed band size:** 80-110 kDa

**Exposure time:** 3 seconds

Blocking/Dilution buffer: 5% NFDm/TBST.

The observed molecular weight is consistent with the literature (PMID: 1712683).



Western blot - Anti-ICAM1 antibody [EPR16608] (ab179707)

**All lanes :** Anti-ICAM1 antibody [EPR16608] (ab179707) at 1/1000 dilution

**Lane 1 :** Mouse lung lysate

**Lane 2 :** RAW 264.7 (Mouse macrophage cell line transformed with Abelson murine leukemia virus) whole cell lysate

**Lane 3 :** WEHI-231 (Mouse lymphoblast B cell lymphoma cell line) whole cell lysate

Lysates/proteins at 20 µg per lane.

### Secondary

**All lanes :** Goat Anti-Rabbit IgG H&L (HRP) ([ab97051](#)) at 1/100000 dilution

**Predicted band size:** 58 kDa

**Observed band size:** 80-110 kDa

Blocking/Dilution buffer: 5% NFDM/TBST.

Exposure time: Lane 1/2: 1 second; Lane 3: 10 seconds.

The observed molecular weight is consistent with the literature (PMID: 1712683).

### Why choose a recombinant antibody?



**Research with confidence**  
Consistent and reproducible results



**Long-term and scalable supply**  
Recombinant technology



**Success from the first experiment**  
Confirmed specificity



**Ethical standards compliant**  
Animal-free production

Anti-ICAM1 antibody [EPR16608] (ab179707)

**Please note:** All products are "FOR RESEARCH USE ONLY. NOT FOR USE IN DIAGNOSTIC PROCEDURES"

## **Our Abpromise to you: Quality guaranteed and expert technical support**

---

- Replacement or refund for products not performing as stated on the datasheet
- Valid for 12 months from date of delivery
- Response to your inquiry within 24 hours
  
- We provide support in Chinese, English, French, German, Japanese and Spanish
- Extensive multi-media technical resources to help you
- We investigate all quality concerns to ensure our products perform to the highest standards

If the product does not perform as described on this datasheet, we will offer a refund or replacement. For full details of the Abpromise, please visit <https://www.abcam.co.jp/abpromise> or contact our technical team.

## **Terms and conditions**

---

- Guarantee only valid for products bought direct from Abcam or one of our authorized distributors