

Anti-ICAM1 antibody [15.2] ab20

[1 Abreviews](#) [26 References](#) [画像数 1](#)

製品の概要

製品名	Anti-ICAM1 antibody [15.2]
製品の詳細	Mouse monoclonal [15.2] to ICAM1
由来種	Mouse
アプリケーション	適用あり: WB 適用なし: IHC-P
種交差性	交差種: Human
免疫原	Tissue, cells or virus corresponding to Human ICAM1. Human monocytes.
ポジティブ・コントロール	WB: SK N BE, Saos-2 and HT1080 whole cell lysate. Flow Cytometry: HK-2 cells stimulated with TGF-beta1. IHC: Human amniotic membrane tissues.
特記事項	<p>The Life Science industry has been in the grips of a reproducibility crisis for a number of years. Abcam is leading the way in addressing this with our range of recombinant monoclonal antibodies and knockout edited cell lines for gold-standard validation. Please check that this product meets your needs before purchasing.</p> <p>If you have any questions, special requirements or concerns, please send us an inquiry and/or contact our Support team ahead of purchase. Recommended alternatives for this product can be found below, along with publications, customer reviews and Q&As</p>

製品の特性

製品の状態	Liquid
保存方法	Shipped at 4°C. Store at +4°C. Do Not Freeze. Store undiluted.
バッファー	pH: 7.20 Preservative: 0.09% Sodium azide Constituents: 0.14% Monobasic dihydrogen sodium phosphate, 0.87% Sodium chloride
精製度	Affinity purified
特記事項 (精製)	This purified format is guaranteed to be >90% pure as determined by SDS-PAGE analysis.
ポリ/モノ	モノクローナル
クローン名	15.2
ミエローマ	Sp2/0
アイソタイプ	IgG1

アプリケーション

The Abpromise guarantee **Abpromise保証は、次のテスト済みアプリケーションにおけるab20の使用に適用されます**
アプリケーションノートには、推奨の開始希釈率がありますが、適切な希釈率につきましてはご検討ください。

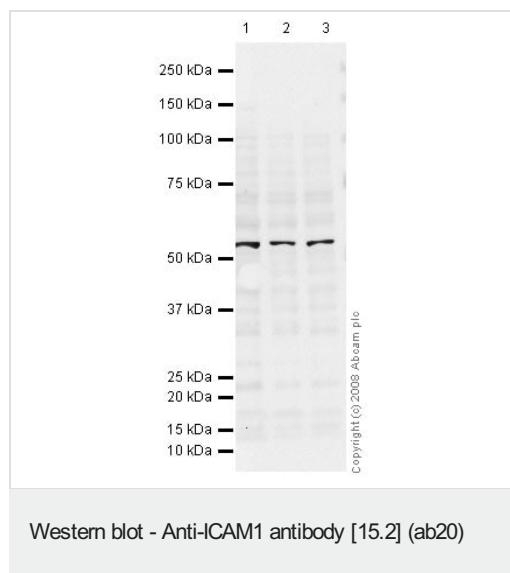
アプリケーション	Abreviews	特記事項
WB		Use at an assay dependent concentration. Predicted molecular weight: 58 kDa.

追加情報 Is unsuitable for IHC-P.

ターゲット情報

機能	ICAM proteins are ligands for the leukocyte adhesion protein LFA-1 (integrin alpha-L/beta-2). During leukocyte trans-endothelial migration, ICAM1 engagement promotes the assembly of endothelial apical cups through ARHGEF26/SGEF and RHOG activation. In case of rhinovirus infection acts as a cellular receptor for the virus.
配列類似性	Belongs to the immunoglobulin superfamily. ICAM family. Contains 5 Ig-like C2-type (immunoglobulin-like) domains.
翻訳後修飾	Monoubiquitinated, which is promoted by MARCH9 and leads to endocytosis.
細胞内局在	Membrane.

画像



All lanes : Anti-ICAM1 antibody [15.2] (ab20) at 5 µg/ml

Lane 1 : SK N BE (Human neuroblastoma) whole cell lysate

Lane 2 : Saos-2 (Human epithelial-like osteosarcoma cell line) whole cell lysate

Lane 3 : HT1080 (Human fibrosarcoma) whole cell lysate

Lysates/proteins at 10 µg per lane.

Secondary

All lanes : Goat polyclonal to Mouse IgG - H&L - Pre-Adsorbed (HRP) at 1/3000 dilution

Predicted band size: 58 kDa

Observed band size: 58 kDa

Please note: All products are "FOR RESEARCH USE ONLY. NOT FOR USE IN DIAGNOSTIC PROCEDURES"

Our Abpromise to you: Quality guaranteed and expert technical support

- Replacement or refund for products not performing as stated on the datasheet
- Valid for 12 months from date of delivery
- Response to your inquiry within 24 hours
- We provide support in Chinese, English, French, German, Japanese and Spanish
- Extensive multi-media technical resources to help you
- We investigate all quality concerns to ensure our products perform to the highest standards

If the product does not perform as described on this datasheet, we will offer a refund or replacement. For full details of the Abpromise, please visit <https://www.abcam.co.jp/abpromise> or contact our technical team.

Terms and conditions

- Guarantee only valid for products bought direct from Abcam or one of our authorized distributors