

Anti-IB-1 antibody ab24449

4 References 画像数 1

医薬用外劇物

製品の概要

製品名	Anti-IB-1 antibody
製品の詳細	Rabbit polyclonal to IB-1
由来種	Rabbit
アプリケーション	適用あり: WB
種交差性	交差種: Mouse, Rat, Human
免疫原	Synthetic peptide corresponding to Mouse IB-1 (N terminal).
ポジティブ・コントロール	Mouse Intestine. Rat kidney. Jurkat whole cell lysate ( <a href="#">ab7899</a> ).
特記事項	<p>This product is manufactured by BioVision, an Abcam company and was previously called 3664 JIP-1 Antibody.</p> <p>The Life Science industry has been in the grips of a reproducibility crisis for a number of years. Abcam is leading the way in addressing this with our range of recombinant monoclonal antibodies and knockout edited cell lines for gold-standard validation. Please check that this product meets your needs before purchasing.</p> <p>If you have any questions, special requirements or concerns, please send us an inquiry and/or contact our Support team ahead of purchase. Recommended alternatives for this product can be found below, along with publications, customer reviews and Q&amp;As</p>

製品の特性

製品の状態	Liquid
保存方法	Shipped at 4°C. Upon delivery aliquot and store at -20°C. Avoid freeze / thaw cycles.
バッファー	Preservative: 0.02% Thimerosal (merthiolate) Constituents: PBS, 50% Glycerol (glycerin, glycerine), 0.1% BSA
精製度	Protein A purified
ポリ/モノ	ポリクローナル
アイソタイプ	IgG

アプリケーション

## The Abpromise guarantee

**Abpromise保証は、次のテスト済みアプリケーションにおけるab24449の使用に適用されます**

アプリケーションノートには、推奨の開始希釈率がありますが、適切な希釈率につきましてはご確認ください。

アプリケーション	Abreviews	特記事項
WB		Use a concentration of 0.5 - 2 µg/ml. Detects a band of approximately 78 kDa (predicted molecular weight: 78 kDa). A band of 110 kDa can also be observed in human samples.

## ターゲット情報

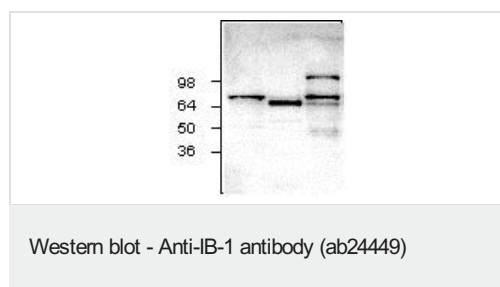
### 関連性

**Function:** The JNK-interacting protein (JIP) group of scaffold proteins selectively mediates JNK signaling by aggregating specific components of the MAPK cascade to form a functional JNK signaling module. Required for JNK activation in response to excitotoxic stress. Cytoplasmic MAPK8IP1 causes inhibition of JNK-regulated activity by retaining JNK in the cytoplasm and inhibiting JNK phosphorylation of c-Jun. May also participate in ApoER2-specific reelin signaling. Directly, or indirectly, regulates GLUT2 gene expression and beta-cell function. Appears to have a role in cell signaling in mature and developing nerve terminals. May function as a regulator of vesicle transport, through interactions with the JNK-signaling components and motor proteins (By similarity). Functions as an anti-apoptotic protein and whose level seems to influence the beta-cell death or survival response. **Tissue specificity:** Highly expressed in brain. Expressed in neurons, localizing to neurite tips in differentiating cells. Also expressed in the pancreas, testis and prostate. Low levels in heart, ovary and small intestine. Decreased levels in pancreatic beta cells sensitize cells to IL-1-beta-induced apoptosis. **Disease:** Diabetes mellitus, non-insulin-dependent. **Similarity:** Belongs to the JIP scaffold family. Contains 1 PID domain. Contains 1 SH3 domain. **Domain:** The destruction boxes (D-box) may act as recognition signals for degradation via the ubiquitin-proteasome pathway. A minimal inhibitory domain prevents pancreatic beta cell apoptosis in vitro, and prevents activation of c-jun by MAPK8, MAPK9 and MAPK10. The SH3 domain mediates homodimerization. **PTM:** Phosphorylated by MAPK8, MAPK9 and MAPK10. Phosphorylation on Thr-103 is also necessary for the dissociation and activation of MAP3K12. Phosphorylated by isoform 1 and isoform 2 of VRK2. Hyperphosphorylated during mitosis following activation of stress-activated and MAP kinases. Ubiquitinated. Two preliminary events are required to prime for ubiquitination; phosphorylation and an increased intracellular calcium concentration. Then, the calcium influx initiates ubiquitination and degradation by the ubiquitin-proteasome pathway.

### 細胞内局在

Cytoplasmic. Accumulates in cell surface projections. Under certain stress conditions, translocates to the perinuclear region of neurons. In insulin-secreting cells, detected in both the cytoplasm and nucleus

## 画像



**All lanes :** Anti-IB-1 antibody (ab24449)

**Lane 1 :** Rat kidney

**Lane 2 :** Mouse Intestine

**Lane 3 :** Jurkat Cell lysate

**Predicted band size:** 78 kDa

**Observed band size:** 78 kDa

**Additional bands at:** 110 kDa (possible isoform)

**Please note:** All products are "FOR RESEARCH USE ONLY. NOT FOR USE IN DIAGNOSTIC PROCEDURES"

#### **Our Abpromise to you: Quality guaranteed and expert technical support**

---

- Replacement or refund for products not performing as stated on the datasheet
- Valid for 12 months from date of delivery
- Response to your inquiry within 24 hours
- We provide support in Chinese, English, French, German, Japanese and Spanish
- Extensive multi-media technical resources to help you
- We investigate all quality concerns to ensure our products perform to the highest standards

If the product does not perform as described on this datasheet, we will offer a refund or replacement. For full details of the Abpromise, please visit <https://www.abcam.co.jp/abpromise> or contact our technical team.

#### **Terms and conditions**

---

- Guarantee only valid for products bought direct from Abcam or one of our authorized distributors