


Anti-HUWE1/Mule antibody ab70161

★★★★★ **2 Abreviews** **16 References** 画像数 **4**

製品の概要

製品名	Anti-HUWE1/Mule antibody
製品の詳細	Rabbit polyclonal to HUWE1/Mule
由来種	Rabbit
アプリケーション	適用あり: WB, IHC-P, IP
種交差性	交差種: Mouse, Human 交差が予測される動物種: Chimpanzee, Gorilla, Orangutan 
免疫原	Synthetic peptide corresponding to Human HUWE1/Mule aa 2250-2300. Database link: Q7Z6Z7
特記事項	<p>The Life Science industry has been in the grips of a reproducibility crisis for a number of years. Abcam is leading the way in addressing this with our range of recombinant monoclonal antibodies and knockout edited cell lines for gold-standard validation. Please check that this product meets your needs before purchasing.</p> <p>If you have any questions, special requirements or concerns, please send us an inquiry and/or contact our Support team ahead of purchase. Recommended alternatives for this product can be found below, along with publications, customer reviews and Q&As</p>

製品の特性

製品の状態	Liquid
保存方法	Shipped at 4°C. Upon delivery aliquot and store at -20°C. Avoid freeze / thaw cycles.
バッファー	pH: 7 Preservative: 0.09% Sodium azide Constituents: 1.815% Tris, 1.764% Sodium citrate, 0.021% PBS
精製度	Immunogen affinity purified
ポリ/モノ	ポリクローナル
アイソタイプ	IgG

アプリケーション

The Abpromise guarantee

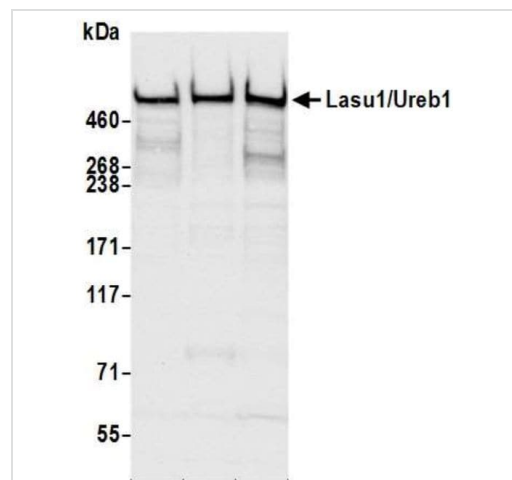
Abpromise保証は、 次のテスト済みアプリケーションにおけるab70161の使用に適用されます

アプリケーションノートには、推奨の開始希釈率がありますが、適切な希釈率につきましてはご確認ください。

アプリケーション	Abreviews	特記事項
WB	★★★★★ (1)	1/1000 - 1/5000. Detects a band of approximately >460 kDa (predicted molecular weight: 481 kDa).
IHC-P		Use a concentration of 5 µg/ml. Perform heat mediated antigen retrieval with Tris/EDTA buffer pH 9.0 before commencing with IHC staining protocol.
IP		Use at 2-10 µg/mg of lysate.

ターゲット情報

機能	E3 ubiquitin-protein ligase which mediates ubiquitination and subsequent proteasomal degradation of target proteins. Regulates apoptosis by catalyzing the polyubiquitination and degradation of MCL1. Mediates monoubiquitination of DNA polymerase beta (POLB) at 'Lys-41', 'Lys-61' and 'Lys-81', thereby playing a role in base-excision repair. Also ubiquitinates the p53/TP53 tumor suppressor and core histones including H1, H2A, H2B, H3 and H4. Binds to an upstream initiator-like sequence in the preprodynorphin gene. Regulates neural differentiation and proliferation by catalyzing the polyubiquitination and degradation of MYCN. May regulate abundance of CDC6 after DNA damage by polyubiquitinating and targeting CDC6 to degradation.
組織特異性	Weakly expressed in heart, brain and placenta but not in other tissues. Expressed in a number of cell lines, predominantly in those from colorectal carcinomas.
パスウェイ	Protein modification; protein ubiquitination.
関連疾患	Defects in HUWE1 are the cause of mental retardation syndromic X-linked Turner type (MRXST) [MIM:300706]; also known as mental retardation and macrocephaly syndrome. MRXST shows clinical variability. Associated phenotypes include macrocephaly and variable contractures. A chromosomal microduplication involving HUWE1 and HSD17B10 is the cause of mental retardation X-linked type 17 (MRX17) [MIM:300705]; also known as mental retardation X-linked type 31 (MRX31). Mental retardation is characterized by significantly sub-average general intellectual functioning associated with impairments in adaptive behavior and manifested during the developmental period. In contrast to syndromic or specific X-linked mental retardation which also present with associated physical, neurological and/or psychiatric manifestations, intellectual deficiency is the only primary symptom of non-syndromic X-linked mental retardation.
配列類似性	Belongs to the TOM1/PTR1 family. Contains 1 HECT (E6AP-type E3 ubiquitin-protein ligase) domain. Contains 1 UBA domain. Contains 1 UIM (ubiquitin-interacting motif) repeat. Contains 1 WWE domain.
ドメイン	The HECT domain mediates inhibition of the transcriptional activity of p53.
翻訳後修飾	Phosphorylated on tyrosine; phosphorylation is probably required for its ability to inhibit TP53 transactivation. Phosphorylated upon DNA damage, probably by ATM or ATR.
細胞内局在	Cytoplasm. Nucleus. Mainly expressed in the cytoplasm of most tissues, except in the nucleus of spermatogonia, primary spermatocytes and neuronal cells (By similarity). Predominantly cytosolic or perinuclear in some colorectal carcinoma cells.



Western blot - Anti-HUWE1/Mule antibody
(ab70161)

All lanes : Anti-HUWE1/Mule antibody (ab70161) at 1/10000 dilution

Lane 1 : HeLa Whole cell lysate

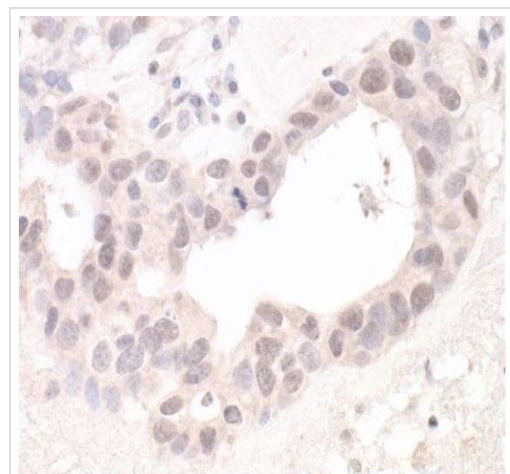
Lane 2 : HEK293T Whole cell lysate

Lane 3 : Jurkat Whole cell lysate

Lysates/proteins at 50 µg per lane.

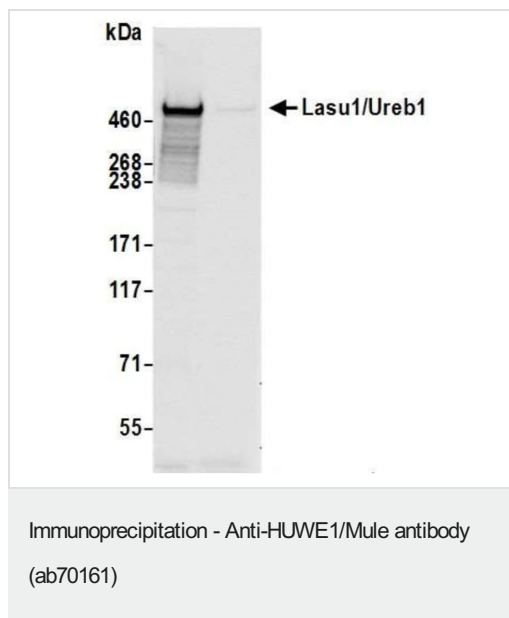
Predicted band size: 481 kDa

Detection: Chemiluminescence with an exposure time of 3 seconds.



Immunohistochemistry (Formalin/PFA-fixed paraffin-embedded sections) - Anti-HUWE1/Mule antibody
(ab70161)

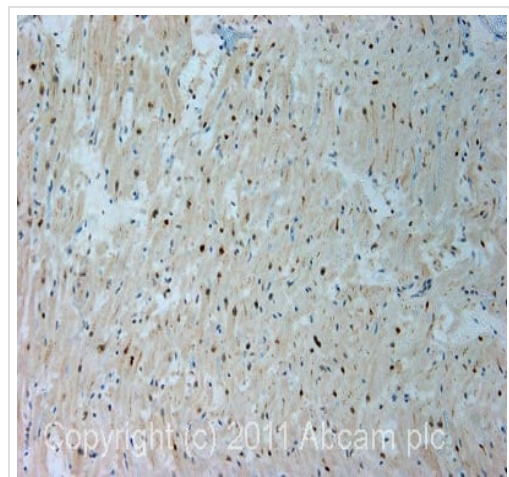
Immunohistochemical analysis of Formalin/PFA-fixed paraffin-embedded section of human ovarian carcinoma tissue labelling HUWE1/Mule with ab70161 at 1/5000 (0.2µg/ml). Detection: DAB.



HUWE1/Mule was immunoprecipitated from HeLa whole cell lysate with 6 µg/mg lysate. Western blot was performed from the immunoprecipitate using ab70161 at 1 µg/ml dilution.

Lane 1: ab70161 IP in HeLa whole cell lysate.

Lane 2: Control IgG IP in HeLa whole cell lysate.



Immunohistochemistry (Formalin/PFA-fixed paraffin-embedded sections) - Anti-HUWE1/Mule antibody (ab70161)

IHC image of ab70161 staining in human normal heart formalin fixed paraffin embedded tissue section, performed on a Leica Bond™ system using the standard protocol F. The section was pre-treated using heat mediated antigen retrieval with EDTA (pH9, epitope retrieval solution 2) for 20 mins. The section was then incubated with ab70161, 5µg/ml, for 15 mins at room temperature and detected using an HRP conjugated compact polymer system. DAB was used as the chromogen. The section was then counterstained with haematoxylin and mounted with DPX.

For other IHC staining systems (automated and non-automated) customers should optimize variable parameters such as antigen retrieval conditions, primary antibody concentration and antibody incubation times.

Please note: All products are "FOR RESEARCH USE ONLY. NOT FOR USE IN DIAGNOSTIC PROCEDURES"

Our Promise to you: Quality guaranteed and expert technical support

- Replacement or refund for products not performing as stated on the datasheet
- Valid for 12 months from date of delivery
- Response to your inquiry within 24 hours
- We provide support in Chinese, English, French, German, Japanese and Spanish
- Extensive multi-media technical resources to help you
- We investigate all quality concerns to ensure our products perform to the highest standards

If the product does not perform as described on this datasheet, we will offer a refund or replacement. For full details of the Abpromise, please visit <https://www.abcam.co.jp/abpromise> or contact our technical team.

Terms and conditions

- Guarantee only valid for products bought direct from Abcam or one of our authorized distributors