


Anti-HUS1 antibody ab96297

4 References [画像数 2](#)

医薬用外劇物

製品の概要

製品名	Anti-HUS1 antibody
製品の詳細	Rabbit polyclonal to HUS1
由来種	Rabbit
アプリケーション	適用あり: WB, IHC-P
種交差性	交差種: Human 交差が予測される動物種: Rat, Cow, Pig 
免疫原	Recombinant protein fragment containing a sequence corresponding to a region within amino acids 1 - 243 of Human HUS1 (AAH07013).
ポジティブ・コントロール	293T cell lysate, CA922 xenograft
特記事項	<p>The Life Science industry has been in the grips of a reproducibility crisis for a number of years. Abcam is leading the way in addressing this with our range of recombinant monoclonal antibodies and knockout edited cell lines for gold-standard validation. Please check that this product meets your needs before purchasing.</p> <p>If you have any questions, special requirements or concerns, please send us an inquiry and/or contact our Support team ahead of purchase. Recommended alternatives for this product can be found below, along with publications, customer reviews and Q&As</p>

製品の特性

製品の状態	Liquid
保存方法	Shipped at 4°C. Upon delivery aliquot and store at -20°C or -80°C. Avoid repeated freeze / thaw cycles.
バッファー	pH: 7.00 Preservative: 0.01% Thimerosal (merthiolate) Constituents: 1.21% Tris, 0.75% Glycine, 20% Glycerol (glycerin, glycerine)
精製度	Immunogen affinity purified
ポリ/モノ	ポリクローナル
アイソタイプ	IgG

アプリケーション

The Abpromise guarantee

Abpromise保証は、次のテスト済みアプリケーションにおけるab96297の使用に適用されます

アプリケーションノートには、推奨の開始希釈率がありますが、適切な希釈率につきましてはご確認ください。

アプリケーション	Abreviews	特記事項
WB		1/500 - 1/3000. Predicted molecular weight: 32 kDa.
IHC-P		1/100 - 1/500.

ターゲット情報

機能

Component of the 9-1-1 cell-cycle checkpoint response complex that plays a major role in DNA repair. The 9-1-1 complex is recruited to DNA lesion upon damage by the RAD17-replication factor C (RFC) clamp loader complex. Acts then as a sliding clamp platform on DNA for several proteins involved in long-patch base excision repair (LP-BER). The 9-1-1 complex stimulates DNA polymerase beta (POLB) activity by increasing its affinity for the 3'-OH end of the primer-template and stabilizes POLB to those sites where LP-BER proceeds; endonuclease FEN1 cleavage activity on substrates with double, nick, or gap flaps of distinct sequences and lengths; and DNA ligase I (LIG1) on long-patch base excision repair substrates.

組織特異性

Ubiquitous.

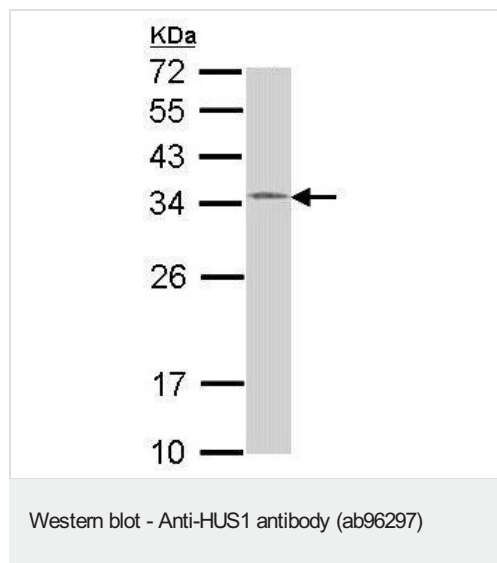
配列類似性

Belongs to the HUS1 family.

細胞内局在

Nucleus. Cytoplasm. In discrete nuclear foci upon DNA damage. According to PubMed:14500360, localized also in the cytoplasm. DNA damage induces its nuclear translocation. Shuttles between the nucleus and the cytoplasm.

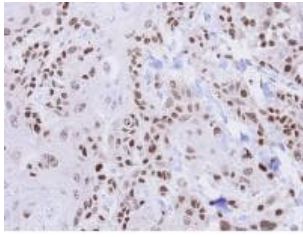
画像



Anti-HUS1 antibody (ab96297) at 1/1000 dilution + 293T whole cell lysate at 30 µg

Predicted band size: 32 kDa

12% SDS PAGE



ab96297 at 1/500 dilution, staining HUS1 in paraffin-embedded CA922 xenograft.

Immunohistochemistry (Formalin/PFA-fixed paraffin-embedded sections) - Anti-HUS1 antibody (ab96297)

Please note: All products are "FOR RESEARCH USE ONLY. NOT FOR USE IN DIAGNOSTIC PROCEDURES"

Our Abpromise to you: Quality guaranteed and expert technical support

- Replacement or refund for products not performing as stated on the datasheet
- Valid for 12 months from date of delivery
- Response to your inquiry within 24 hours
- We provide support in Chinese, English, French, German, Japanese and Spanish
- Extensive multi-media technical resources to help you
- We investigate all quality concerns to ensure our products perform to the highest standards

If the product does not perform as described on this datasheet, we will offer a refund or replacement. For full details of the Abpromise, please visit <https://www.abcam.co.jp/abpromise> or contact our technical team.

Terms and conditions

- Guarantee only valid for products bought direct from Abcam or one of our authorized distributors