

Anti-Human Serum Albumin antibody ab2406

★★★★☆ **2 Abreviews** **22 References** 画像数 3

製品の概要

製品名	Anti-Human Serum Albumin antibody
製品の詳細	Rabbit polyclonal to Human Serum Albumin
由来種	Rabbit
アプリケーション	適用あり: Sandwich ELISA, IHC-P
種交差性	交差種: Human
免疫原	Full length native protein (purified) corresponding to Human Serum Albumin.
ポジティブ・コントロール	IHC-P: Human liver tissue.
特記事項	<p>The Life Science industry has been in the grips of a reproducibility crisis for a number of years. Abcam is leading the way in addressing this with our range of recombinant monoclonal antibodies and knockout edited cell lines for gold-standard validation. Please check that this product meets your needs before purchasing.</p> <p>If you have any questions, special requirements or concerns, please send us an inquiry and/or contact our Support team ahead of purchase. Recommended alternatives for this product can be found below, along with publications, customer reviews and Q&As</p>

製品の特性

製品の状態	Liquid
保存方法	Shipped at 4°C. Store at +4°C short term (1-2 weeks). Store at -20°C or -80°C. Avoid freeze / thaw cycle.
バッファー	<p>pH: 7.3</p> <p>Preservative: 0.05% Sodium azide</p> <p>Constituent: 1% BSA</p>
精製度	Protein A purified
ポリ/モノ	ポリクローナル
アイソタイプ	IgG
軽鎖の種類	unknown

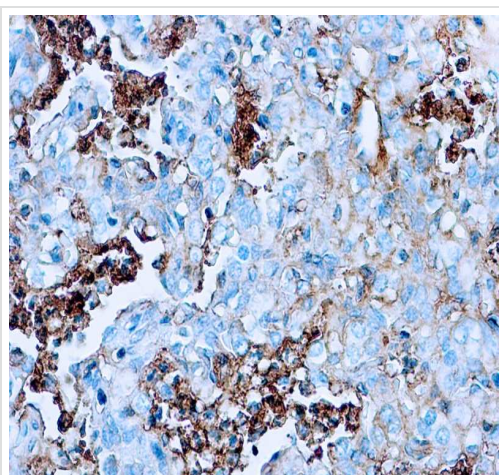
アプリケーション

The Abpromise guarantee Abpromise保証は、 次のテスト済みアプリケーションにおけるab2406の使用に適用されます
アプリケーションノートには、推奨の開始希釈率がありますが、適切な希釈率につきましてはご検討ください。

アプリケーション	Abreviews	特記事項
Sandwich ELISA		Use at an assay dependent concentration. Can be paired for Sandwich ELISA with <u>Mouse monoclonal [15C7] to Human Serum Albumin (ab10241)</u> . For sandwich ELISA, use this antibody as Detection at 0.5 µg/ml with Mouse monoclonal [15C7] to Human Serum Albumin (<u>ab10241</u>) as Capture.
IHC-P		1/50 - 1/100. Perform heat mediated antigen retrieval before commencing with IHC staining protocol.

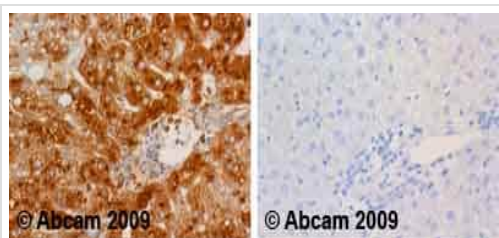
ターゲット情報	
機能	Serum albumin, the main protein of plasma, has a good binding capacity for water, Ca(2+), Na(+), K(+), fatty acids, hormones, bilirubin and drugs. Its main function is the regulation of the colloidal osmotic pressure of blood. Major zinc transporter in plasma, typically binds about 80% of all plasma zinc.
組織特異性	Plasma.
関連疾患	Defects in ALB are a cause of familial dysalbuminemic hyperthyroxinemia (FDH) [MIM:103600]. FDH is a form of euthyroid hyperthyroxinemia that is due to increased affinity of ALB for T(4). It is the most common cause of inherited euthyroid hyperthyroxinemia in Caucasian population.
配列類似性	Belongs to the ALB/AFP/VDB family. Contains 3 albumin domains.
翻訳後修飾	Kenitra variant is partially O-glycosylated at Thr-620. It has two new disulfide bonds Cys-600 to Cys-602 and Cys-601 to Cys-606. Glycated in diabetic patients. Phosphorylation sites are present in the extracellular medium. Acetylated on Lys-223 by acetylsalicylic acid.
細胞内局在	Secreted.

画像



Immunohistochemistry (Formalin/PFA-fixed paraffin-embedded sections) - Anti-Human Serum Albumin antibody (ab2406)

Formalin-fixed, paraffin-embedded human liver tissue stained for Human Serum Albumin using ab2406 at 1/50 dilution in immunohistochemical analysis.

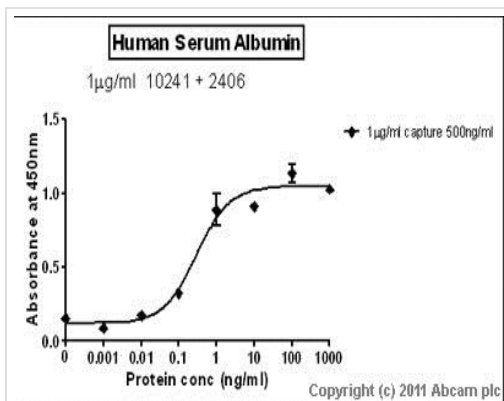


Immunohistochemistry (Formalin/PFA-fixed paraffin-embedded sections) - Anti-Human Serum Albumin antibody (ab2406)

Ab2406 staining human normal liver. Staining is localised to the cytoplasm and secreted.

Left panel: with primary antibody. Right panel: isotype control.

Sections were stained using an automated system DAKO Autostainer Plus , at room temperature. Sections were rehydrated and antigen retrieved with the Dako 3-in-1 antigen retrieval buffers citrate pH 6.0 in a DAKO PT Link. Slides were peroxidase blocked in 3% H₂O₂ in methanol for 10 minutes. They were then blocked with Dako Protein block for 10 minutes (containing casein 0.25% in PBS) then incubated with primary antibody for 20 minutes and detected with Dako Envision Flex amplification kit for 30 minutes. Colorimetric detection was completed with diaminobenzidine for 5 minutes. Slides were counterstained with Haematoxylin and coverslipped under DePeX. Please note that for manual staining we recommend to optimize the primary antibody concentration and incubation time (overnight incubation), and amplification may be re



Sandwich ELISA - Anti-Human Serum Albumin
antibody (ab2406)

Standard Curve for Human Serum Albumin (Analyte: Human Serum Albumin protein (ab67670)); using Capture Antibody Mouse monoclonal [15C7] to Human Serum Albumin (ab10241) at 1 µg/ml and Detector Antibody Rabbit polyclonal to Human Serum Albumin (ab2406).

Please note: All products are "FOR RESEARCH USE ONLY. NOT FOR USE IN DIAGNOSTIC PROCEDURES"

Our Abpromise to you: Quality guaranteed and expert technical support

- Replacement or refund for products not performing as stated on the datasheet
- Valid for 12 months from date of delivery
- Response to your inquiry within 24 hours
- We provide support in Chinese, English, French, German, Japanese and Spanish
- Extensive multi-media technical resources to help you
- We investigate all quality concerns to ensure our products perform to the highest standards

If the product does not perform as described on this datasheet, we will offer a refund or replacement. For full details of the Abpromise, please visit <https://www.abcam.co.jp/abpromise> or contact our technical team.

Terms and conditions

- Guarantee only valid for products bought direct from Abcam or one of our authorized distributors