

Anti-Human Serum Albumin antibody [15C7] ab10241

★★★★★ [7 Abreviews](#) [39 References](#) [画像数 4](#)

製品の概要

製品名	Anti-Human Serum Albumin antibody [15C7]
製品の詳細	Mouse monoclonal [15C7] to Human Serum Albumin
由来種	Mouse
特異性	No cross-reactivity with other human proteins tested. Does not react with bovine serum albumin, egg white albumin or human alpha fetoprotein.
アプリケーション	適用あり: WB, Sandwich ELISA, Dot blot
種交差性	交差種: Human 非交差種: Chicken, Cow
免疫原	Full length native protein (purified) corresponding to Human Serum Albumin. Database link: P02768
特記事項	Concentration varies from lot to lot and can be provided on request. This product was changed from ascites to tissue culture supernatant on 17th October 2017 and product received after this date will be from tissue culture supernatant. The Life Science industry has been in the grips of a reproducibility crisis for a number of years. Abcam is leading the way in addressing this with our range of recombinant monoclonal antibodies and knockout edited cell lines for gold-standard validation. Please check that this product meets your needs before purchasing. If you have any questions, special requirements or concerns, please send us an inquiry and/or contact our Support team ahead of purchase. Recommended alternatives for this product can be found below, along with publications, customer reviews and Q&As

製品の特性

製品の状態	Liquid
保存方法	Shipped at 4°C. Upon delivery aliquot and store at -20°C. Avoid freeze / thaw cycles.
バッファー	pH: 7.40 Preservative: 0.09% Sodium azide Constituent: PBS
精製度	Protein A purified
ポリ/モノ	モノクローナル

クローン名	15C7
ミエローマ	Sp2/0
アイソタイプ	IgG2b

アプリケーション

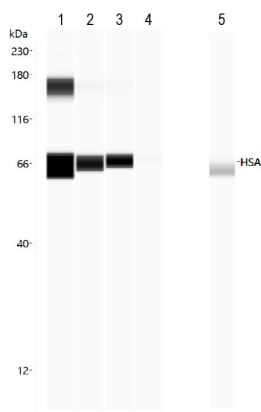
The Abpromise guarantee **Abpromise保証は、次のテスト済みアプリケーションにおけるab10241の使用に適用されます**
 アプリケーションノートには、推奨の開始希釈率がありますが、適切な希釈率につきましてはご検討ください。

アプリケーション	Abreviews	特記事項
WB	★★★★★ (2)	Use at an assay dependent concentration. Predicted molecular weight: 65 kDa.
Sandwich ELISA		Use a concentration of 1 µg/ml. Can be paired for Sandwich ELISA with <u>Rabbit polyclonal to Human Serum Albumin (ab2406)</u> .
Dot blot		Use at an assay dependent concentration.

ターゲット情報

機能	Serum albumin, the main protein of plasma, has a good binding capacity for water, Ca(2+), Na(+), K(+), fatty acids, hormones, bilirubin and drugs. Its main function is the regulation of the colloidal osmotic pressure of blood. Major zinc transporter in plasma, typically binds about 80% of all plasma zinc.
組織特異性	Plasma.
関連疾患	Defects in ALB are a cause of familial dysalbuminemic hyperthyroxinemia (FDH) [MIM:103600]. FDH is a form of euthyroid hyperthyroxinemia that is due to increased affinity of ALB for T(4). It is the most common cause of inherited euthyroid hyperthyroxinemia in Caucasian population.
配列類似性	Belongs to the ALB/AFP/VDB family. Contains 3 albumin domains.
翻訳後修飾	Kenitra variant is partially O-glycosylated at Thr-620. It has two new disulfide bonds Cys-600 to Cys-602 and Cys-601 to Cys-606. Glycated in diabetic patients. Phosphorylation sites are present in the extracellular medium. Acetylated on Lys-223 by acetylsalicylic acid.
細胞内局在	Secreted.

画像



Dot Blot - Anti-Human Serum Albumin antibody
[15C7] (ab10241)

Dot Blot - Anti-Human Serum Albumin antibody [15C7] (ab10241)

Lane 1: HSA 0.5 mg/ml

Lane 2: HSA 0.25 mg/ml

Lane 3: HSA 0.1 mg/ml

Lane 4: HSA 0.01 mg/ml

Lane 5: BSA 0.5 mg/ml



Western blot - Anti-Human Serum Albumin antibody
[15C7] (ab10241)

This image is courtesy of an Abreview submitted by
John Andersen

Anti-Human Serum Albumin antibody [15C7] (ab10241) at 1/2000
dilution (in 5% milk for 1 hour) + Human blood serum at 2 μ g

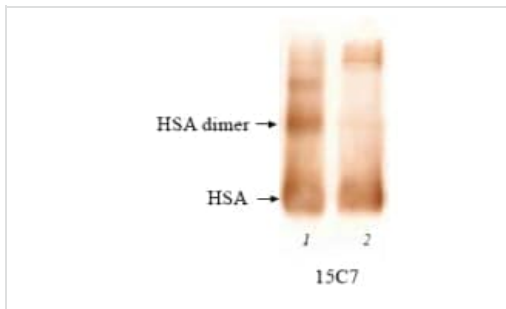
Secondary

anti-mouse IgG (H&L)

Developed using the ECL technique.

Predicted band size: 65 kDa

Exposure time: 5 seconds

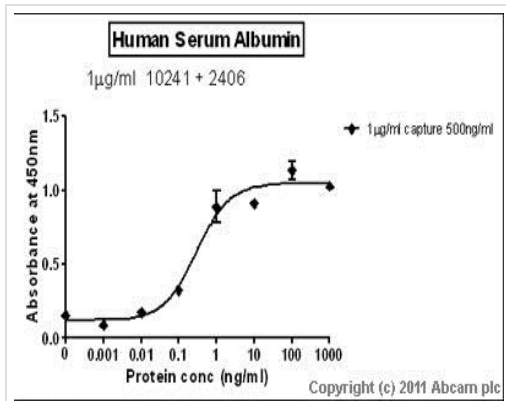


Western blot - Anti-Human Serum Albumin antibody
[15C7] (ab10241)

Detection of Human Serum Albumin by ab10241 in western blotting.

Lane 1 - human serum albumin, 3 µg.

Lane 2 - normal human serum, ~3 µg of human serum albumin.



Sandwich ELISA - Anti-Human Serum Albumin
antibody [15C7] (ab10241)

Standard Curve for Human Serum Albumin (Analyte: Human Serum Albumin protein (**ab67670**)); dilution range 1pg/ml to 1µg/ml using Capture Antibody Mouse monoclonal [15C7] to Human Serum Albumin (ab10241) at 1µg/ml and Detector Antibody Rabbit polyclonal to Human Serum Albumin (**ab2406**) at 0.5µg/ml.

Please note: All products are "FOR RESEARCH USE ONLY. NOT FOR USE IN DIAGNOSTIC PROCEDURES"

Our Abpromise to you: Quality guaranteed and expert technical support

- Replacement or refund for products not performing as stated on the datasheet
- Valid for 12 months from date of delivery
- Response to your inquiry within 24 hours
- We provide support in Chinese, English, French, German, Japanese and Spanish
- Extensive multi-media technical resources to help you
- We investigate all quality concerns to ensure our products perform to the highest standards

If the product does not perform as described on this datasheet, we will offer a refund or replacement. For full details of the Abpromise, please visit <https://www.abcam.co.jp/abpromise> or contact our technical team.

Terms and conditions

- Guarantee only valid for products bought direct from Abcam or one of our authorized distributors