

Anti-Human IgM antibody [R1/69] ab17104

[1 References](#) [画像数 1](#)

製品の概要

製品名	Anti-Human IgM antibody [R1/69]
製品の詳細	Mouse monoclonal [R1/69] to Human IgM
由来種	Mouse
アプリケーション	適用あり: IHC-P
種交差性	交差種: Human
免疫原	Tissue, cells or virus corresponding to Human Human IgM.
ポジティブ・コントロール	Tonsil
特記事項	<p>This antibody reacts with the heavy chain present in all types of human IgM.</p> <p>The Life Science industry has been in the grips of a reproducibility crisis for a number of years. Abcam is leading the way in addressing this with our range of recombinant monoclonal antibodies and knockout edited cell lines for gold-standard validation. Please check that this product meets your needs before purchasing.</p> <p>If you have any questions, special requirements or concerns, please send us an inquiry and/or contact our Support team ahead of purchase. Recommended alternatives for this product can be found below, along with publications, customer reviews and Q&As</p>

製品の特性

製品の状態	Liquid
保存方法	Shipped at 4°C. Store at +4°C short term (1-2 weeks). Store at -20°C or -80°C. Avoid freeze / thaw cycle.
バッファー	pH: 7.3 Preservative: 0.05% Sodium azide Constituents: Tissue culture supernatant, 1% BSA
精製度	Tissue culture supernatant
一次抗体 備考	This antibody reacts with the heavy chain present in all types of human IgM.
ポリ/モノ	モノクローナル
クローン名	R1/69
アイソタイプ	IgG1
軽鎖の種類	kappa

アプリケーション

The Abpromise guarantee **Abpromise保証は、次のテスト済みアプリケーションにおけるab17104の使用に適用されず**
アプリケーションノートには、推奨の開始希釈率がありますが、適切な希釈率につきましてはご確認ください。

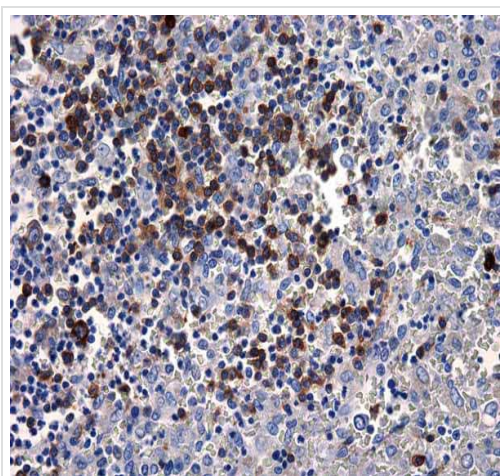
アプリケーション	Abreviews	特記事項
IHC-P		1/25 - 1/50. Perform enzymatic antigen retrieval before commencing with IHC staining protocol. 1/25 - 1/50 in an ABC method. We suggest an incubation period of 30 minutes at room temperature.

ターゲット情報

関連性 IgM normally constitutes about 10% of serum immunoglobulins. IgM antibody is prominent in early immune responses to most antigens and is largely confined to plasma due to its large size. Monomeric IgM is expressed as a membrane bound antibody on the surface of B cells and as a pentamer when secreted by plasma cells. Due to its high valency IgM is more efficient than other isotypes in binding antigens with repeating epitopes (virus particles and red blood cells) and is more efficient than IgG in activating the complement pathway. The gene for the mu constant region contains four domains separated by short intervening sequences. IgM measurement yields information about the body's immediate resistance and response to infection as well as information related to specific diseases. Decreased levels are associated with immune deficiency states, hereditary deficiencies, and myeloma. Increased levels can be associated with Waldenstrom's macroglobulinemia, chronic infection and hepatocellular disease.

細胞内局在 Cell Membrane and Secreted

画像



Immunohistochemical analysis of formalin-fixed paraffin-embedded human spleen tissue sections, labelling IgM with ab17104.

Immunohistochemistry (Formalin/PFA-fixed paraffin-embedded sections) - Anti-Human IgM antibody
[R1/69] (ab17104)

Please note: All products are "FOR RESEARCH USE ONLY. NOT FOR USE IN DIAGNOSTIC PROCEDURES"

Our Abpromise to you: Quality guaranteed and expert technical support

- Replacement or refund for products not performing as stated on the datasheet
- Valid for 12 months from date of delivery
- Response to your inquiry within 24 hours

- We provide support in Chinese, English, French, German, Japanese and Spanish
- Extensive multi-media technical resources to help you
- We investigate all quality concerns to ensure our products perform to the highest standards

If the product does not perform as described on this datasheet, we will offer a refund or replacement. For full details of the Abpromise, please visit <https://www.abcam.co.jp/abpromise> or contact our technical team.

Terms and conditions

- Guarantee only valid for products bought direct from Abcam or one of our authorized distributors