

Anti-Human IgG3 antibody [EPR4419] ab109761

リコンビナント RabMAb[®]

11 References [画像数 2](#)

製品の概要

製品名	Anti-Human IgG3 antibody [EPR4419]
製品の詳細	Rabbit monoclonal [EPR4419] to Human IgG3
由来種	Rabbit
特異性	ab109761 does not cross-react with human IgG1, IgG2, and IgG4.
アプリケーション	適用あり: WB, IP 適用なし: Flow Cyt, ICC/IF or IHC-P
種交差性	交差種: Human, Recombinant fragment
免疫原	Synthetic peptide. This information is proprietary to Abcam and/or its suppliers.
ポジティブ・コントロール	IgG3 recombinant protein, Human tonsil and Human plasma lysates.
特記事項	<p>This product is a recombinant monoclonal antibody, which offers several advantages including:</p> <ul style="list-style-type: none">- High batch-to-batch consistency and reproducibility- Improved sensitivity and specificity- Long-term security of supply- Animal-free production <p>For more information see here.</p> <p>Our RabMAb[®] technology is a patented hybridoma-based technology for making rabbit monoclonal antibodies. For details on our patents, please refer to RabMAb[®] patents.</p> <p>Mouse, Rat: We have preliminary internal testing data to indicate this antibody may not react with these species. Please contact us for more information.</p>

製品の特性

製品の状態	Liquid
保存方法	Shipped at 4°C. Store at +4°C short term (1-2 weeks). Upon delivery aliquot. Store at -20°C. Stable for 12 months at -20°C.
バッファー	pH: 7.20 Preservative: 0.05% Sodium azide Constituents: 0.1% BSA, 40% Glycerol (glycerin, glycerine), 9.85% Tris glycine, 50% Tissue culture supernatant

精製度	Protein A purified
ポリ/モノ	モノクローナル
クローン名	EPR4419
アイソタイプ	IgG

アプリケーション

The Abpromise guarantee Abpromise保証は、次のテスト済みアプリケーションにおけるab109761の使用に適用されません
 アプリケーションノートには、推奨の開始希釈率がありますが、適切な希釈率につきましてはご確認ください。

アプリケーション	Abreviews	特記事項
WB		1/1000 - 1/10000.
IP		1/10 - 1/100.

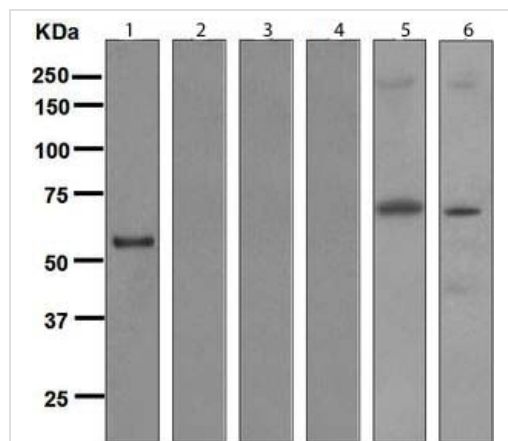
追加情報 Is unsuitable for Flow Cyt, ICC/IF or IHC-P.

ターゲット情報

関連性 IgG is a monomeric immunoglobulin, built of two heavy chains gamma and two light chains. Each molecule has two antigen binding sites. This is the most abundant immunoglobulin and is approximately equally distributed in blood and in tissue liquids, constituting 75% of serum immunoglobulins in humans. There are 4 subclasses: IgG1 (66%), IgG2 (23%), IgG3 (7%) and IgG4 (4%).

細胞内局在 Secreted

画像



All lanes : Anti-Human IgG3 antibody [EPR4419] (ab109761) at 1/1000 dilution

Lane 1 : IgG3 at 0.01 µg

Lane 2 : IgG1 at 0.01 µg

Lane 3 : IgG2 at 0.01 µg

Lane 4 : IgG4 recombinant protein at 0.01 µg

Lane 5 : Human tonsil lysate at 10 µg

Lane 6 : Human plasma lysate

Western blot - Anti-Human IgG3 antibody [EPR4419] (ab109761)

Why choose a recombinant antibody?



Research with confidence
Consistent and reproducible results



Long-term and scalable supply
Recombinant technology



Success from the first experiment
Confirmed specificity



Ethical standards compliant
Animal-free production

Anti-Human IgG3 antibody [EPR4419] (ab109761)

Please note: All products are "FOR RESEARCH USE ONLY. NOT FOR USE IN DIAGNOSTIC PROCEDURES"

Our Abpromise to you: Quality guaranteed and expert technical support

- Replacement or refund for products not performing as stated on the datasheet
- Valid for 12 months from date of delivery
- Response to your inquiry within 24 hours
- We provide support in Chinese, English, French, German, Japanese and Spanish
- Extensive multi-media technical resources to help you
- We investigate all quality concerns to ensure our products perform to the highest standards

If the product does not perform as described on this datasheet, we will offer a refund or replacement. For full details of the Abpromise, please visit <https://www.abcam.co.jp/abpromise> or contact our technical team.

Terms and conditions

- Guarantee only valid for products bought direct from Abcam or one of our authorized distributors