

Anti-Human IgG FC fragment antibody [EM-07] ab77118

★★★★☆ [1 Abreviews](#) [2 References](#) [画像数 4](#)

製品の概要

製品名	Anti-Human IgG FC fragment antibody [EM-07]
製品の詳細	Mouse monoclonal [EM-07] to Human IgG FC fragment
由来種	Mouse
特異性	Reacts with Fc part of human IgG heavy chain and with isolated Fc fragments. It does not cross-react with IgM.
アプリケーション	適用あり: Flow Cyt
種交差性	交差種: Human
免疫原	Fusion protein corresponding to Human Human IgG FC fragment.
ポジティブ・コントロール	Flow Cyt: Human peripheral whole blood,
特記事項	<p>The Life Science industry has been in the grips of a reproducibility crisis for a number of years. Abcam is leading the way in addressing this with our range of recombinant monoclonal antibodies and knockout edited cell lines for gold-standard validation. Please check that this product meets your needs before purchasing.</p> <p>If you have any questions, special requirements or concerns, please send us an inquiry and/or contact our Support team ahead of purchase. Recommended alternatives for this product can be found below, along with publications, customer reviews and Q&As</p>

製品の特性

製品の状態	Liquid
保存方法	Shipped at 4°C. Upon delivery aliquot and store at -20°C or -80°C. Avoid repeated freeze / thaw cycles.
バッファー	pH: 7.40 Preservative: 0.097% Sodium azide Constituent: PBS
精製度	Protein A purified
特記事項(精製)	Purity >95% by SDS-PAGE.
ポリ/モノ	モノクローナル
クローン名	EM-07
アイソタイプ	IgG1

アプリケーション

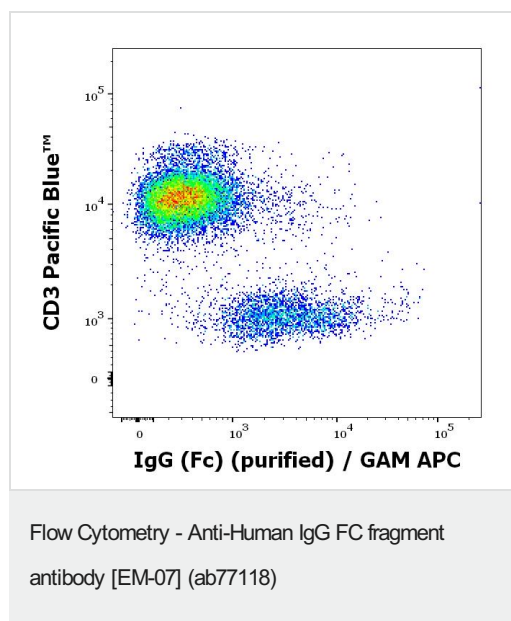
The Abpromise guarantee Abpromise保証は、次のテスト済みアプリケーションにおけるab77118の使用に適用されます
アプリケーションノートには、推奨の開始希釈率がありますが、適切な希釈率につきましてはご検討ください。

アプリケーション	Abreviews	特記事項
Flow Cyt		Use a concentration of 1 - 4 µg/ml.

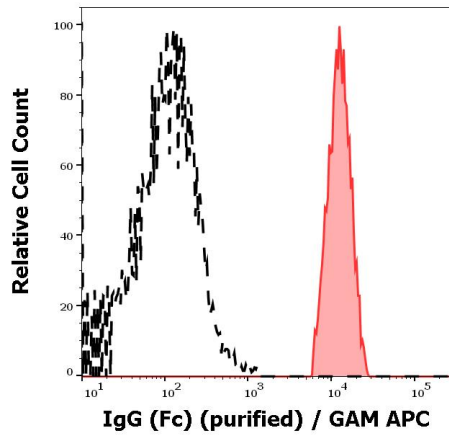
ターゲット情報

関連性 The Fc region is the constant region on an immunoglobulin molecule, the area that is exactly the same on all antibodies. The Fc region is found on the heavy chains and is not involved in binding antigens.

画像

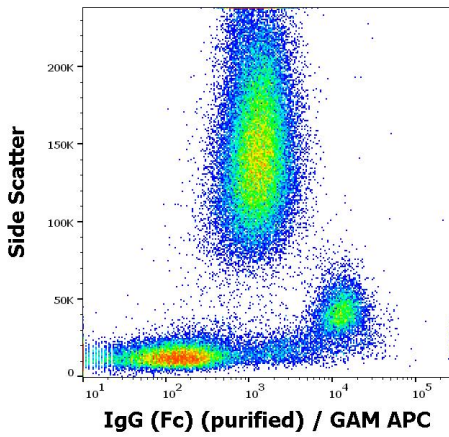


Flow cytometry multicolor surface staining of human peripheral whole blood stained with ab77118 (concentration in sample 1 µg/ml, GAM APC) and anti-human CD3 (UCHT1) Pacific Blue™ antibody (20 µl reagent / 100 µl of peripheral whole blood).



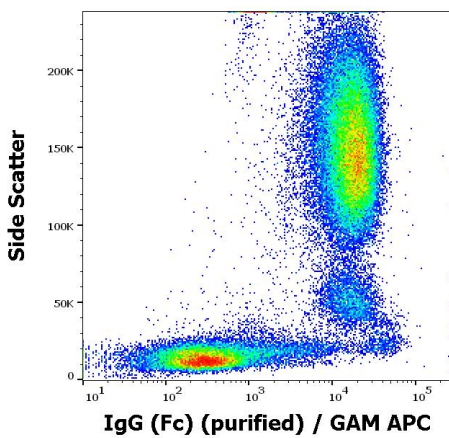
Separation of human monocytes (red-filled) from CD3 negative IgG (Fc) positive lymphocytes (black-dashed) in flow cytometry analysis (surface staining) of peripheral whole blood stained with ab77118 (concentration in sample 1 $\mu\text{g/ml}$, GAM APC). The pattern varies depending on the blood donor.

Flow Cytometry - Anti-Human IgG FC fragment antibody [EM-07] (ab77118)



Flow cytometry surface staining pattern of human peripheral whole blood with ab77118 (concentration in sample 1 $\mu\text{g/ml}$, GAM APC). The pattern varies depending on the blood donor.

Flow Cytometry - Anti-Human IgG FC fragment antibody [EM-07] (ab77118)



Flow cytometry surface staining pattern of human peripheral whole blood with ab77118 purified antibody (concentration in sample 1 $\mu\text{g/ml}$, GAM APC). The pattern varies depending on the blood donor.

Flow Cytometry - Anti-Human IgG FC fragment antibody [EM-07] (ab77118)

Please note: All products are "FOR RESEARCH USE ONLY. NOT FOR USE IN DIAGNOSTIC PROCEDURES"

Our Abpromise to you: Quality guaranteed and expert technical support

- Replacement or refund for products not performing as stated on the datasheet
- Valid for 12 months from date of delivery
- Response to your inquiry within 24 hours

- We provide support in Chinese, English, French, German, Japanese and Spanish
- Extensive multi-media technical resources to help you
- We investigate all quality concerns to ensure our products perform to the highest standards

If the product does not perform as described on this datasheet, we will offer a refund or replacement. For full details of the Abpromise, please visit <https://www.abcam.co.jp/abpromise> or contact our technical team.

Terms and conditions

- Guarantee only valid for products bought direct from Abcam or one of our authorized distributors