

Anti-Human IgG antibody [EPR4421] ab109489

リコンビナント RabMAb

★★★★☆ **3 Abreviews** **301 References** 画像数 8

製品の概要

製品名	Anti-Human IgG antibody [EPR4421]
製品の詳細	Rabbit monoclonal [EPR4421] to Human IgG
由来種	Rabbit
特異性	This antibody recognizes all four Human IgG isotypes (IgG1, IgG2, IgG3, and IgG4).
アプリケーション	適用あり: WB, IHC-P
種交差性	交差種: Human
免疫原	Synthetic peptide. This information is proprietary to Abcam and/or its suppliers.
ポジティブ・コントロール	WB: Human IgG2, IgG1, IgG3, and IgG4 recombinant proteins, human fetal thymus, fetal tonsil and fetal spleen tissue lysates. IHC-P: Human tonsil and stomach tissues.
特記事項	<p>This product is a recombinant monoclonal antibody, which offers several advantages including:</p> <ul style="list-style-type: none">- High batch-to-batch consistency and reproducibility- Improved sensitivity and specificity- Long-term security of supply- Animal-free production <p>For more information see here.</p> <p>Our RabMAb[®] technology is a patented hybridoma-based technology for making rabbit monoclonal antibodies. For details on our patents, please refer to RabMAb[®] patents.</p> <p>Mouse, Rat: We have preliminary internal testing data to indicate this antibody may not react with these species. Please contact us for more information.</p>

製品の特性

製品の状態	Liquid
保存方法	Shipped at 4°C. Store at +4°C short term (1-2 weeks). Upon delivery aliquot. Store at -20°C. Stable for 12 months at -20°C.
バッファー	pH: 7.20 Preservative: 0.01% Sodium azide Constituents: 40% Glycerol, 59% PBS, 0.05% BSA
精製度	Protein A purified

ポリ/モノ	モノクローナル
クローン名	EPR4421
アイソタイプ	IgG

アプリケーション

The Abpromise guarantee **Abpromise保証は、次のテスト済みアプリケーションにおけるab109489の使用に適用されず**
 アプリケーションノートには、推奨の開始希釈率がありますが、適切な希釈率につきましてはご検討ください。

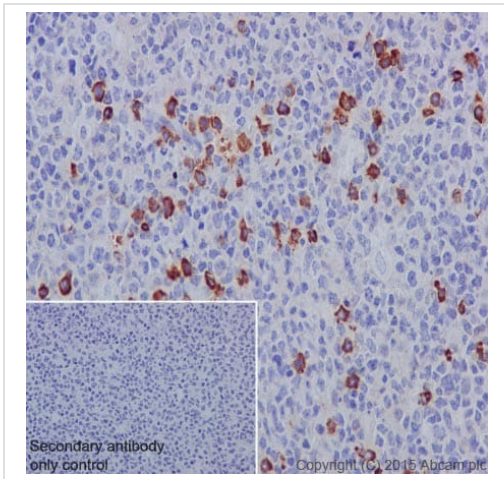
アプリケーション	Abreviews	特記事項
WB		1/1000 - 1/10000. Detects a band of approximately 52-58 kDa.
IHC-P	★★★★★ (1)	1/300 - 1/1000. Perform heat mediated antigen retrieval before commencing with IHC staining protocol. See IHC antigen retrieval protocols .

ターゲット情報

関連性 IgG is a monomeric immunoglobulin, built of two heavy chains gamma and two light chains. Each molecule has two antigen binding sites. This is the most abundant immunoglobulin and is approximately equally distributed in blood and in tissue liquids, constituting 75% of serum immunoglobulins in humans. This is the only isotype that can pass through the human placenta, thereby providing protection to the fetus in its first weeks of life before its own immune system has developed. It can bind to many kinds of pathogens, for example viruses, bacteria, and fungi, and protects the body against them by complement activation (classic pathway), opsonization for phagocytosis and neutralisation of their toxins. There are 4 subclasses: IgG1 (66%), IgG2 (23%), IgG3 (7%) and IgG4 (4%).

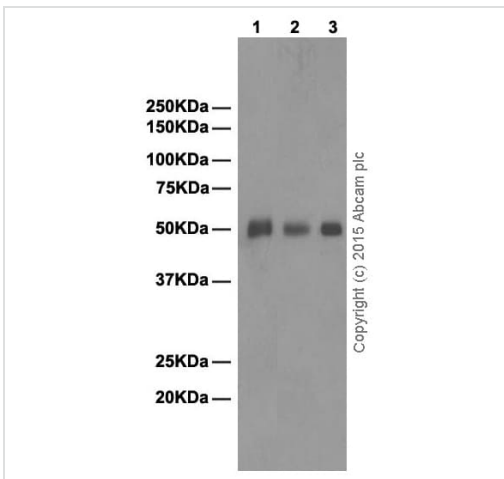
細胞内局在 Cell Membrane and Secreted

画像



Immunohistochemistry (Formalin/PFA-fixed paraffin-embedded sections) - Anti-Human IgG antibody [EPR4421] (ab109489)

Immunohistochemistry (Formalin/PFA-fixed paraffin-embedded sections) analysis of human tonsil tissue labeling Human IgG with purified ab109489 at 1/300. Heat mediated antigen retrieval was performed using Tris/EDTA buffer pH 9. **ab97051**, a HRP-conjugated goat anti-rabbit IgG (H+L) was used as the secondary antibody (1/500). Negative control using PBS instead of primary antibody. Counterstained with hematoxylin.



Western blot - Anti-Human IgG antibody [EPR4421] (ab109489)

All lanes : Anti-Human IgG antibody [EPR4421] (ab109489) at 1/20000 dilution (purified)

Lane 1 : Human fetal thymus tissue lysate

Lane 2 : Human fetal tonsil tissue lysate

Lane 3 : Human fetal spleen tissue lysate

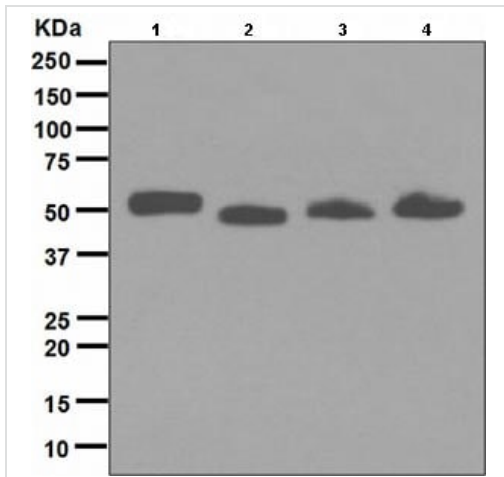
Lysates/proteins at 20 µg per lane.

Secondary

All lanes : Goat Anti-Rabbit IgG H&L (HRP) (**ab97051**) at 1/50000 dilution

Observed band size: 50 kDa

Blocking and dilution buffer: 5% NFDm/TBST.



Western blot - Anti-Human IgG antibody [EPR4421] (ab109489)

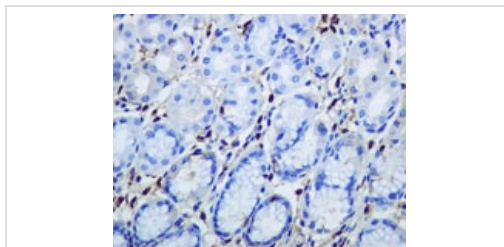
All lanes : Anti-Human IgG antibody [EPR4421] (ab109489) at 1/1000 dilution (unpurified)

Lane 1 : IgG2 recombinant protein (10 ng protein loaded)

Lane 2 : IgG1 recombinant protein (10 ng protein loaded)

Lane 3 : IgG3 recombinant protein (10 ng protein loaded)

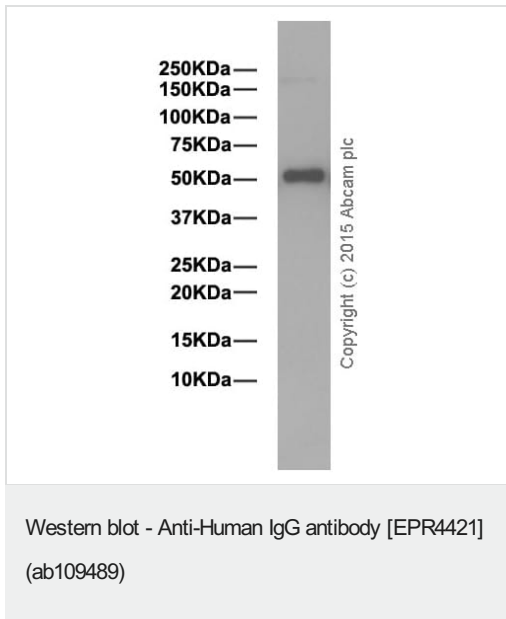
Lane 4 : IgG4 recombinant protein (10 ng protein loaded)



Immunohistochemistry (Formalin/PFA-fixed paraffin-embedded sections) - Anti-Human IgG antibody [EPR4421] (ab109489)

Immunohistochemistry (Formalin/PFA-fixed paraffin-embedded sections) analysis of human stomach tissue labelling IgG with unpurified ab109489 at a dilution of 1/500.

Perform heat mediated antigen retrieval before commencing with IHC staining protocol.



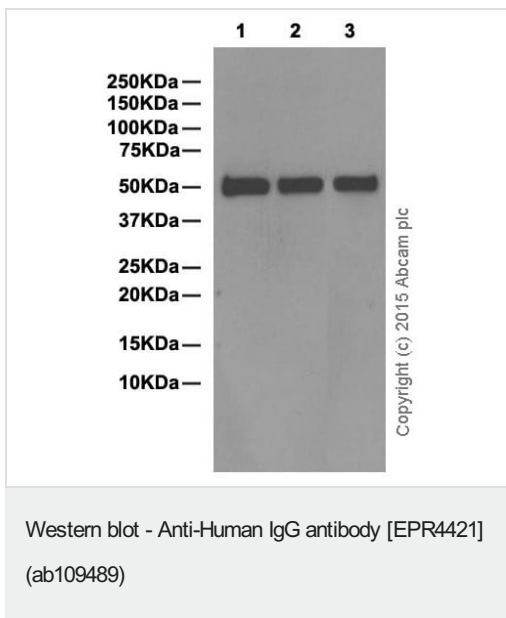
Anti-Human IgG antibody [EPR4421] (ab109489) at 1/1000 dilution (purified) + IgG3 recombinant protein at 0.01 µg

Secondary

Goat Anti-Rabbit IgG H&L (HRP) ([ab97051](#)) at 1/50000 dilution

Observed band size: 50 kDa

Blocking and dilution buffer: 5% NFDm/TBST.



All lanes : Anti-Human IgG antibody [EPR4421] (ab109489) at 1/5000 dilution (purified)

Lane 1 : IgG1 recombinant protein

Lane 2 : IgG2 recombinant protein

Lane 3 : IgG4 recombinant protein

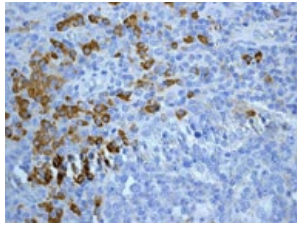
Lysates/proteins at 0.01 µg per lane.

Secondary

All lanes : Goat Anti-Rabbit IgG H&L (HRP) ([ab97051](#)) at 1/50000 dilution

Observed band size: 50 kDa

Blocking and dilution buffer: 5% NFDm/TBST.



Immunohistochemistry (Formalin/PFA-fixed paraffin-embedded sections) - Anti-Human IgG antibody [EPR4421] (ab109489)

Immunohistochemistry (Formalin/PFA-fixed paraffin-embedded sections) analysis of human tonsil tissue labelling IgG with unpurified ab109489 at a dilution of 1/500.

Perform heat mediated antigen retrieval before commencing with IHC staining protocol.

Why choose a recombinant antibody?



Research with confidence
Consistent and reproducible results



Long-term and scalable supply
Recombinant technology



Success from the first experiment
Confirmed specificity



Ethical standards compliant
Animal-free production

Anti-Human IgG antibody [EPR4421] (ab109489)

Please note: All products are "FOR RESEARCH USE ONLY. NOT FOR USE IN DIAGNOSTIC PROCEDURES"

Our Abpromise to you: Quality guaranteed and expert technical support

- Replacement or refund for products not performing as stated on the datasheet
- Valid for 12 months from date of delivery
- Response to your inquiry within 24 hours
- We provide support in Chinese, English, French, German, Japanese and Spanish
- Extensive multi-media technical resources to help you
- We investigate all quality concerns to ensure our products perform to the highest standards

If the product does not perform as described on this datasheet, we will offer a refund or replacement. For full details of the Abpromise, please visit <https://www.abcam.co.jp/abpromise> or contact our technical team.

Terms and conditions

- Guarantee only valid for products bought direct from Abcam or one of our authorized distributors