

Anti-HtrA3 antibody - Catalytic domain ab65911

1 References [画像数 1](#)

製品の概要

製品名	Anti-HtrA3 antibody - Catalytic domain
製品の詳細	Rabbit polyclonal to HtrA3 - Catalytic domain
由来種	Rabbit
特異性	ab65911 recognizes both of the isoforms of HtrA3.
アプリケーション	適用あり: WB
種交差性	交差種: Human
免疫原	Synthetic peptide based on the catalytic domain of human HtrA3.
ポジティブ・コントロール	Extracts of SW 620 in Serum Free, or treated with TPA, IL 1-Alpha, or IL 1-Beta.
特記事項	<p>The Life Science industry has been in the grips of a reproducibility crisis for a number of years. Abcam is leading the way in addressing this with our range of recombinant monoclonal antibodies and knockout edited cell lines for gold-standard validation. Please check that this product meets your needs before purchasing.</p> <p>If you have any questions, special requirements or concerns, please send us an inquiry and/or contact our Support team ahead of purchase. Recommended alternatives for this product can be found below, along with publications, customer reviews and Q&As</p>

製品の特性

製品の状態	Liquid
保存方法	Shipped at 4°C. Store at -20°C. Stable for 12 months at -20°C.
バッファー	<p>pH: 7.40</p> <p>Preservative: 0.05% Sodium azide</p> <p>Constituents: PBS, 50% Glycerol, 2.9% Sodium chloride</p>
精製度	Immunogen affinity purified
ポリ/モノ	ポリクローナル
アイソタイプ	IgG

アプリケーション

The Abpromise guarantee

Abpromise保証は、 次のテスト済みアプリケーションにおけるab65911の使用に適用されます

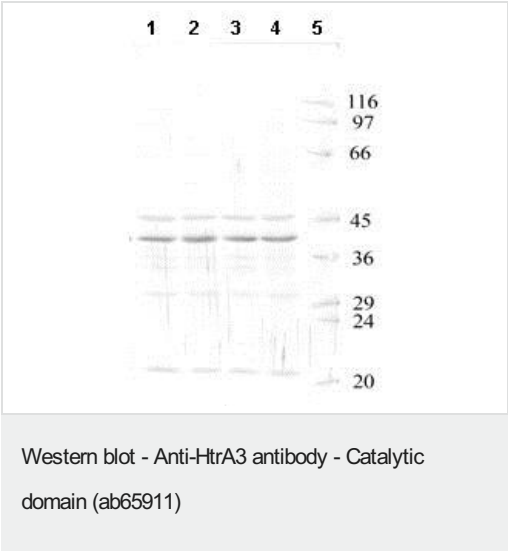
アプリケーションノートには、推奨の開始希釈率がありますが、適切な希釈率につきましてはご確認ください。

アプリケーション	Abreviews	特記事項
WB		

追加情報	<p>WB: 1/1000 when using colorimetric substrates such as BCIP/NBT, and 1/5000 for chemiluminescent substrates. Detects bands of approximately 48 & 40 kDa (predicted molecular weight: 50 & 38 kDa).</p> <p>Not yet tested in other applications.</p> <p>Optimal dilutions/concentrations should be determined by the end user.</p>
------	---

ターゲット情報	
機能	Probable serine protease.
組織特異性	Widely expressed, with highest levels in both adult and fetal heart, ovary, uterus placenta, and bladder. Isoform 1 is predominant in heart and skeletal muscle, whereas isoform 2 is predominant in placenta and kidney.
配列類似性	Belongs to the peptidase S1B family. Contains 1 IGFBP N-terminal domain. Contains 1 Kazal-like domain. Contains 1 PDZ (DHR) domain.
細胞内局在	Secreted.

画像



All lanes : Anti-HtrA3 antibody - Catalytic domain (ab65911) at 1/1000 dilution

- Lane 1 :** SW 620 with SF
- Lane 2 :** SW 620 with TPA
- Lane 3 :** SW 620 with IL 1-Alpha
- Lane 4 :** SW 620 with IL 1-Beta
- Lane 5 :** Molecular weight markers

Predicted band size: 50 , 38 kDa
Observed band size: 40,48 kDa

Multiple additonal bands are observed. We are unsure as to the identity of these extra bands.

Please note: All products are "FOR RESEARCH USE ONLY. NOT FOR USE IN DIAGNOSTIC PROCEDURES"

Our Abpromise to you: Quality guaranteed and expert technical support

- Replacement or refund for products not performing as stated on the datasheet
- Valid for 12 months from date of delivery
- Response to your inquiry within 24 hours

- We provide support in Chinese, English, French, German, Japanese and Spanish
- Extensive multi-media technical resources to help you
- We investigate all quality concerns to ensure our products perform to the highest standards

If the product does not perform as described on this datasheet, we will offer a refund or replacement. For full details of the Abpromise, please visit <https://www.abcam.co.jp/abpromise> or contact our technical team.

Terms and conditions

- Guarantee only valid for products bought direct from Abcam or one of our authorized distributors