

# Anti-HSV1 gG Envelope Protein antibody [7F5] ab6511

**1 References** [画像数 1](#)

### 製品の概要

製品名	Anti-HSV1 gG Envelope Protein antibody [7F5]
製品の詳細	Mouse monoclonal [7F5] to HSV1 gG Envelope Protein
由来種	Mouse
アプリケーション	<b>適用あり:</b> WB, ELISA, ICC/IF
種交差性	<b>交差種:</b> Herpes simplex virus
免疫原	Tissue, cells or virus corresponding to HSV1 gG Envelope Protein.
特記事項	<p>The Life Science industry has been in the grips of a reproducibility crisis for a number of years. Abcam is leading the way in addressing this with our range of recombinant monoclonal antibodies and knockout edited cell lines for gold-standard validation. Please check that this product meets your needs before purchasing.</p> <p>If you have any questions, special requirements or concerns, please send us an inquiry and/or contact our Support team ahead of purchase. Recommended alternatives for this product can be found below, along with publications, customer reviews and Q&amp;As</p>

### 製品の特性

製品の状態	Liquid
保存方法	Shipped at 4°C. Upon delivery aliquot and store at -20°C or -80°C. Avoid repeated freeze / thaw cycles.
バッファー	pH: 7.4
精製度	Protein A purified
ポリ/モノ	モノクローナル
クローン名	7F5
ミエローマ	NS1/1-Ag4-1
アイソタイプ	IgG2a
軽鎖の種類	kappa

### アプリケーション

## The Abpromise guarantee

**Abpromise保証は、次のテスト済みアプリケーションにおけるab6511の使用に適用されます**

アプリケーションノートには、推奨の開始希釈率がありますが、適切な希釈率につきましてはご検討ください。

アプリケーション	Abreviews	特記事項
WB		1/80000.
ELISA		1/102400.
ICC/IF		1/25600.

## ターゲット情報

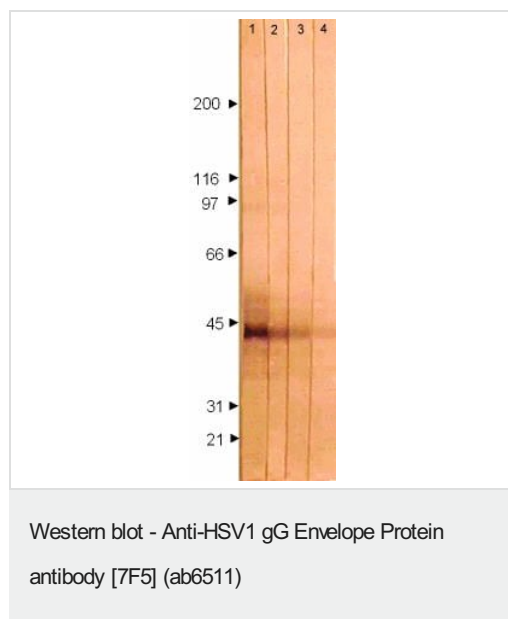
### 関連性

Herpes simplex virus type 1 (HSV1) is usually associated with infections of the lips, mouth, and face. It is the most common herpes simplex virus and is usually acquired in childhood. HSV-1 often causes lesions inside the mouth such as cold sores (fever blisters) and is transmitted by contact with infected saliva. Glycoprotein G is suggested to contribute to viral entry through apical surfaces of polarized cells.

### 細胞内局在

Viral envelope

## 画像



Western blot with ab6511.

Lane 1: ab6511 at 1:10,000

Lane 2: ab6511 at 1:20,000

Lane 3: ab6511 at 1:40,000

Lane 4: ab6511 at 1:80,000

**Please note:** All products are "FOR RESEARCH USE ONLY. NOT FOR USE IN DIAGNOSTIC PROCEDURES"

## Our Abpromise to you: Quality guaranteed and expert technical support

- Replacement or refund for products not performing as stated on the datasheet
- Valid for 12 months from date of delivery
- Response to your inquiry within 24 hours

- We provide support in Chinese, English, French, German, Japanese and Spanish
- Extensive multi-media technical resources to help you
- We investigate all quality concerns to ensure our products perform to the highest standards

If the product does not perform as described on this datasheet, we will offer a refund or replacement. For full details of the Abpromise, please visit <https://www.abcam.co.jp/abpromise> or contact our technical team.

#### **Terms and conditions**

---

- Guarantee only valid for products bought direct from Abcam or one of our authorized distributors