

Anti-HSV1 gC Envelope Protein antibody [3G9] ab6509

★★★★★ [2 Abreviews](#) [13 References](#) [画像数 1](#)

製品の概要

製品名	Anti-HSV1 gC Envelope Protein antibody [3G9]
製品の詳細	Mouse monoclonal [3G9] to HSV1 gC Envelope Protein
由来種	Mouse
アプリケーション	適用あり: WB, ELISA, ICC/IF
種交差性	交差種: Herpes simplex virus
免疫原	Tissue, cells or virus corresponding to Herpes simplex virus HSV1 gC Envelope Protein. Herpes Virus
特記事項	<p>The Life Science industry has been in the grips of a reproducibility crisis for a number of years. Abcam is leading the way in addressing this with our range of recombinant monoclonal antibodies and knockout edited cell lines for gold-standard validation. Please check that this product meets your needs before purchasing.</p> <p>If you have any questions, special requirements or concerns, please send us an inquiry and/or contact our Support team ahead of purchase. Recommended alternatives for this product can be found below, along with publications, customer reviews and Q&As</p>

製品の特性

製品の状態	Liquid
保存方法	Shipped at 4°C. Upon delivery aliquot and store at -20°C or -80°C. Avoid repeated freeze / thaw cycles.
バッファー	pH: 7.4
精製度	Protein A purified
ポリ/モノ	モノクローナル
クローン名	3G9
ミエローマ	NS1/1-Ag4-1
アイソタイプ	IgG2a
軽鎖の種類	kappa

アプリケーション

The Abpromise guarantee

Abpromise保証は、次のテスト済みアプリケーションにおけるab6509の使用に適用されます

アプリケーションノートには、推奨の開始希釈率がありますが、適切な希釈率につきましてはご検討ください。

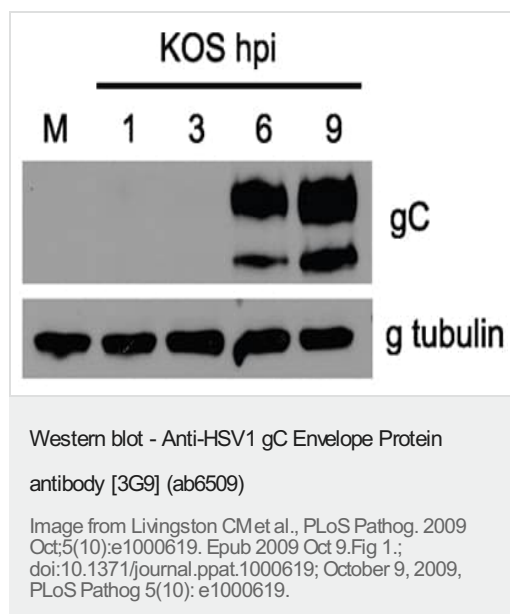
アプリケーション	Abreviews	特記事項
WB	★★★★★ (2)	1/1000.
ELISA		1/102400.
ICC/IF		1/25600.

ターゲット情報

関連性

Herpes simplex type 1 (HSV-1) belongs to a family that includes HSV-2, Epstein-Barr virus (EBV) and Varicella zoster (chicken pox) virus amongst others. HSV-1 and HSV-2 are extremely difficult to distinguish from each other. Members of this family have a characteristic virion structure. The double stranded DNA genome is contained within an icosahedral capsid embedded in a proteinaceous layer (tegument) and surrounded by a lipid envelope, derived from the nuclear membrane of the last host, which is decorated with virus-specific glycoproteins spikes. These viruses are capable of entering a latent phase where the host shows no visible sign of infection and levels of infectious agent become very low. During the latent phase the viral DNA is integrated into the genome of the host cell.

画像



Western blot analysis of Vero cells mock-infected or infected with KOS at a multiplicity of infection of 10 for 1, 3, 6 and 9 hours.

HSV1 gC Envelope Protein was detected using ab6509, at 1/1000 dilution. An HRP-conjugated sheep-anti-mouse IgG (1/20000) was used as the secondary antibody.

Please note: All products are "FOR RESEARCH USE ONLY. NOT FOR USE IN DIAGNOSTIC PROCEDURES"

Our Abpromise to you: Quality guaranteed and expert technical support

- Replacement or refund for products not performing as stated on the datasheet

- Valid for 12 months from date of delivery
- Response to your inquiry within 24 hours
- We provide support in Chinese, English, French, German, Japanese and Spanish
- Extensive multi-media technical resources to help you
- We investigate all quality concerns to ensure our products perform to the highest standards

If the product does not perform as described on this datasheet, we will offer a refund or replacement. For full details of the Abpromise, please visit <https://www.abcam.co.jp/abpromise> or contact our technical team.

Terms and conditions

- Guarantee only valid for products bought direct from Abcam or one of our authorized distributors