

Anti-HSV1 + HSV2 VP16 antibody [LP1] ab110226

22 References [画像数 2](#)

製品の概要

製品名	Anti-HSV1 + HSV2 VP16 antibody [LP1]
製品の詳細	Mouse monoclonal [LP1] to HSV1 + HSV2 VP16
由来種	Mouse
特異性	This antibody is specific for Herpes simplex virus tegument protein VP16. This antibody will cross react with HSV1 and HSV2.
アプリケーション	適用あり: ICC/IF, IP, WB
種交差性	交差種: Herpes simplex virus, Human herpesvirus 2
免疫原	Tissue, cells or virus corresponding to HSV1 + HSV2 VP16. HSV-2.
特記事項	<p>The Life Science industry has been in the grips of a reproducibility crisis for a number of years. Abcam is leading the way in addressing this with our range of recombinant monoclonal antibodies and knockout edited cell lines for gold-standard validation. Please check that this product meets your needs before purchasing.</p> <p>If you have any questions, special requirements or concerns, please send us an inquiry and/or contact our Support team ahead of purchase. Recommended alternatives for this product can be found below, along with publications, customer reviews and Q&As</p>

製品の特性

製品の状態	Liquid
保存方法	Shipped at 4°C. Upon delivery aliquot and store at -20°C. Avoid repeated freeze / thaw cycles.
バッファー	Constituent: PBS
精製度	Protein G purified
ポリ/モノ	モノクローナル
クローン名	LP1
アイソタイプ	IgG1

アプリケーション

The Abpromise guarantee

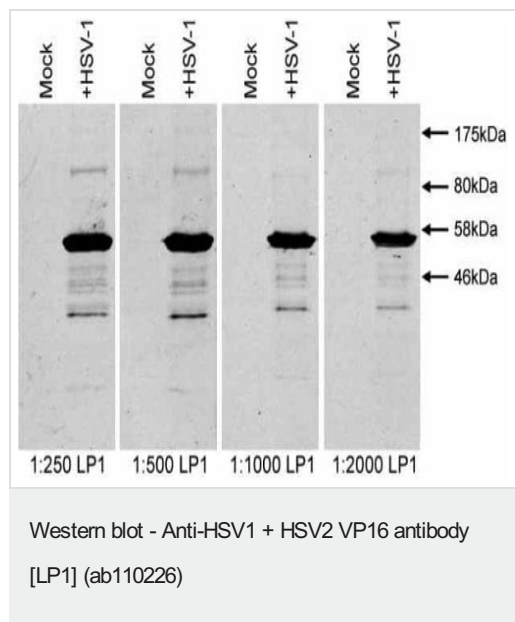
Abpromise保証は、次のテスト済みアプリケーションにおけるab110226の使用に適用されます

アプリケーションノートには、推奨の開始希釈率がありますが、適切な希釈率につきましてはご検討ください。

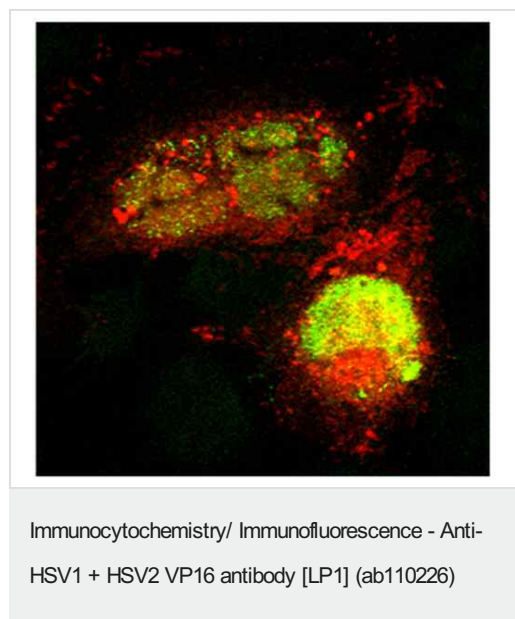
アプリケーション	Abreviews	特記事項
ICC/IF		1/100.
IP		1/50.
WB		1/1000. Predicted molecular weight: 56 kDa.

ターゲット情報

画像



Vero cells were mock infected or infected with HSV-1 (strain SC16) at 10PFU/cell and harvested at 18h post infection. Cells were lysed in 50mM Tris pH 7.6, 150 mM NaCl, 1% sodium deoxycholate, 1% Triton X-100 supplemented with protease inhibitors. Samples were boiled in SDS-PAGE sample buffer, separated on a 10% polyacrylamide gel and transferred to a nitrocellulose membrane by western blot. Membranes were blocked in PBS, 0.05% Tween-20, 5% dried milk powder and incubated with ab110226 at various dilutions followed by anti-mouse-IRdye 800CW and scanned using an infrared imager. Each lane corresponds to approximately 3x10⁵ cells.



HeLa cells were infected with HSV-1 (strain SC16) at 3 PFU/cell and fixed in 4% formaldehyde at 18h post infection. Cells were permeabilised with 0.1% Triton X-100 and incubated with ab110226 (red) and anti-capsid (green) followed by Alexa-488 and Alexa-633 conjugated secondary antibodies.

Please note: All products are "FOR RESEARCH USE ONLY. NOT FOR USE IN DIAGNOSTIC PROCEDURES"

Our Abpromise to you: Quality guaranteed and expert technical support

- Replacement or refund for products not performing as stated on the datasheet
- Valid for 12 months from date of delivery
- Response to your inquiry within 24 hours

- We provide support in Chinese, English, French, German, Japanese and Spanish
- Extensive multi-media technical resources to help you
- We investigate all quality concerns to ensure our products perform to the highest standards

If the product does not perform as described on this datasheet, we will offer a refund or replacement. For full details of the Abpromise, please visit <https://www.abcam.co.jp/abpromise> or contact our technical team.

Terms and conditions

- Guarantee only valid for products bought direct from Abcam or one of our authorized distributors