


Anti-hSSB1 antibody ab85752

1 References [画像数 3](#)

製品の概要

製品名	Anti-hSSB1 antibody
製品の詳細	Rabbit polyclonal to hSSB1
由来種	Rabbit
アプリケーション	適用あり: WB, IP, IHC-P
種交差性	交差種: Mouse, Human 交差が予測される動物種: Rat, Rabbit, Horse, Guinea pig, Cow, Dog, Pig, Rhesus monkey, Gorilla, Chinese hamster, Orangutan, Elephant 
免疫原	Synthetic peptide corresponding to Human hSSB1 aa 161-211. Database link: NP_076973.1
ポジティブ・コントロール	HeLa and 293T whole cell lysates.
特記事項	<p>The Life Science industry has been in the grips of a reproducibility crisis for a number of years. Abcam is leading the way in addressing this with our range of recombinant monoclonal antibodies and knockout edited cell lines for gold-standard validation. Please check that this product meets your needs before purchasing.</p> <p>If you have any questions, special requirements or concerns, please send us an inquiry and/or contact our Support team ahead of purchase. Recommended alternatives for this product can be found below, along with publications, customer reviews and Q&As</p>

製品の特性

製品の状態	Liquid
保存方法	Shipped at 4°C. Upon delivery aliquot and store at -20°C. Avoid freeze / thaw cycles.
バッファー	pH: 7 Preservative: 0.09% Sodium azide Constituent: Tris citrate/phosphate
精製度	Immunogen affinity purified
ポリ/モノ	ポリクローナル
アイソタイプ	IgG

アプリケーション

The Abpromise guarantee

Abpromise保証は、次のテスト済みアプリケーションにおけるab85752の使用に適用されます

アプリケーションノートには、推奨の開始希釈率がありますが、適切な希釈率につきましてはご検討ください。

アプリケーション	Abreviews	特記事項
WB		1/2000 - 1/10000. Detects a band of approximately 33 kDa (predicted molecular weight: 23 kDa).
IP		Use at 2-5 µg/mg of lysate.
IHC-P		1/1000 - 1/5000. Perform heat mediated antigen retrieval before commencing with IHC staining protocol. Antigen retrieval with Tris-EDTA pH9.0 is recommended for human tissues. Antigen retrieval with citrate buffer pH6.0 is recommended for mouse tissues.

ターゲット情報

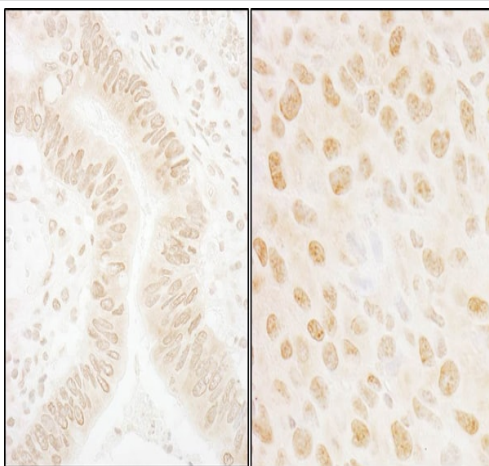
関連性

Single-stranded DNA (ssDNA)-binding proteins, such as hSSB1, are ubiquitous and essential for a variety of DNA metabolic processes, including replication, recombination, and detection and repair of damage. hSSB1 plays an important role in DNA damage response. It influences diverse endpoints in the cellular DNA damage response, including cell-cycle checkpoint activation, recombinational repair and maintenance of genomic stability. It associates with DNA lesions, and enables the efficient activation of ATM and consequent phosphorylation of downstream proteins.

細胞内局在

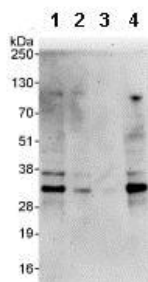
Nuclear. Localizes to nuclear foci following DNA damage.

画像



Immunohistochemistry (Formalin/PFA-fixed paraffin-embedded sections) analysis of human colon carcinoma (left) and mouse squamous cell carcinoma (right) tissues labelling hSSB1 with ab85752 at 1/1000 (1 µg/ml). Detection: DAB.

Immunohistochemistry (Formalin/PFA-fixed paraffin-embedded sections) - Anti-hSSB1 antibody (ab85752)



Western blot - Anti-hSSB1 antibody (ab85752)

All lanes : Anti-hSSB1 antibody (ab85752) at 0.4 µg/ml

Lane 1 : HeLa whole cell lysate at 50 µg

Lane 2 : HeLa whole cell lysate at 15 µg

Lane 3 : HeLa whole cell lysate at 5 µg

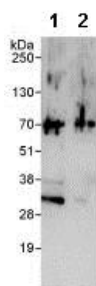
Lane 4 : 293T whole cell lysate at 50 µg

Predicted band size: 23 kDa

Observed band size: 33 kDa

Additional bands at: 38 kDa. We are unsure as to the identity of these extra bands.

Exposure time: 3 minutes



Immunoprecipitation - Anti-hSSB1 antibody (ab85752)

Detection of Human hSSB1 by Western Blot of Immunoprecipitate.

All lanes: ab85752 at 1µg/ml detecting by WB hSSB1 in HeLa whole cell lysates, that were immunoprecipitated with ab85752 at 3µg/mg lysate (1 mg/IP; 20% of IP loaded/lane). Lane 1: ab85752
Lane 2: Control IgG

Detection: Chemiluminescence with exposure time of 5 seconds.

Please note: All products are "FOR RESEARCH USE ONLY. NOT FOR USE IN DIAGNOSTIC PROCEDURES"

Our Abpromise to you: Quality guaranteed and expert technical support

- Replacement or refund for products not performing as stated on the datasheet
- Valid for 12 months from date of delivery
- Response to your inquiry within 24 hours
- We provide support in Chinese, English, French, German, Japanese and Spanish
- Extensive multi-media technical resources to help you
- We investigate all quality concerns to ensure our products perform to the highest standards

If the product does not perform as described on this datasheet, we will offer a refund or replacement. For full details of the Abpromise, please visit <https://www.abcam.co.jp/abpromise> or contact our technical team.

Terms and conditions

- Guarantee only valid for products bought direct from Abcam or one of our authorized distributors