


# Anti-HSPC142 antibody ab115040

画像数 1

### 製品の概要

製品名	Anti-HSPC142 antibody
製品の詳細	Rabbit polyclonal to HSPC142
由来種	Rabbit
アプリケーション	適用あり: IP
種交差性	交差種: Human 交差が予測される動物種: Chimpanzee, Gorilla, Orangutan 
免疫原	Synthetic peptide, corresponding to a region within amino acids 1-50 of Human HSPC142 (NP_054892.2).
ポジティブ・コントロール	HeLa whole cell lysate.
特記事項	<p>The Life Science industry has been in the grips of a reproducibility crisis for a number of years. Abcam is leading the way in addressing this with our range of recombinant monoclonal antibodies and knockout edited cell lines for gold-standard validation. Please check that this product meets your needs before purchasing.</p> <p>If you have any questions, special requirements or concerns, please send us an inquiry and/or contact our Support team ahead of purchase. Recommended alternatives for this product can be found below, along with publications, customer reviews and Q&amp;As</p>

### 製品の特性

製品の状態	Liquid
保存方法	Shipped at 4°C. Upon delivery aliquot and store at -20°C. Avoid freeze / thaw cycles.
バッファー	<p>pH: 7</p> <p>Preservative: 0.09% Sodium azide</p> <p>Constituent: 99% Tris citrate/phosphate</p>
精製度	pH 7 to 8 Immunogen affinity purified
ポリ/モノ	ポリクローナル
アイソタイプ	IgG

## アプリケーション

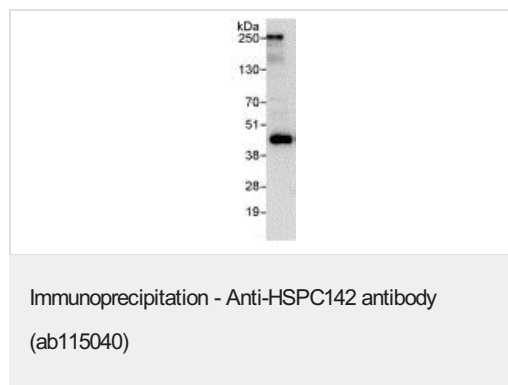
**The Abpromise guarantee** Abpromise保証は、 次のテスト済みアプリケーションにおけるab115040の使用に適用されます  
アプリケーションノートには、推奨の開始希釈率がありますが、適切な希釈率につきましてはご検討ください。

アプリケーション	Abreviews	特記事項
IP		Use at 2-5 µg/mg of lysate.

## ターゲット情報

機能	Component of the BRCA1-A complex, a complex that specifically recognizes 'Lys-63'-linked ubiquitinated histones H2A and H2AX at DNA lesions sites, leading to target the BRCA1-BARD1 heterodimer to sites of DNA damage at double-strand breaks (DSBs). The BRCA1-A complex also possesses deubiquitinase activity that specifically removes 'Lys-63'-linked ubiquitin on histones H2A and H2AX. In the BRCA1-A complex, it is required for the complex integrity and its localization at DSBs. Probably also plays a role as a component of the BRISC complex, a multiprotein complex that specifically cleaves 'Lys-63'-linked ubiquitin. In these 2 complexes, it is probably required to maintain the stability of BRE/BRCC45 and help the 'Lys-63'-linked deubiquitinase activity mediated by BRCC3/BRCC36. component.
配列類似性	Belongs to the BABAM1 family.
ドメイン	The VWFA-like region is similar to the VWFA domain. Its presence reveals similarities between the structure of the 19S proteasome and the BRCA1-A complexes.
細胞内局在	Cytoplasm. Nucleus. Localizes at sites of DNA damage at double-strand breaks.

## 画像



Detection of HSPC142 by Western Blot of Immunoprecipitates.  
ab115040 at 1µg/ml staining HSPC142 in HeLa whole cell lysate immunoprecipitated using ab115040 at 3µg/mg lysate (1 mg/IP; 20% of IP loaded).  
Detection: Chemiluminescence with exposure time of 10 seconds.

**Please note:** All products are "FOR RESEARCH USE ONLY. NOT FOR USE IN DIAGNOSTIC PROCEDURES"

## Our Abpromise to you: Quality guaranteed and expert technical support

- Replacement or refund for products not performing as stated on the datasheet
- Valid for 12 months from date of delivery
- Response to your inquiry within 24 hours

- We provide support in Chinese, English, French, German, Japanese and Spanish
- Extensive multi-media technical resources to help you
- We investigate all quality concerns to ensure our products perform to the highest standards

If the product does not perform as described on this datasheet, we will offer a refund or replacement. For full details of the Abpromise, please visit <https://www.abcam.co.jp/abpromise> or contact our technical team.

### **Terms and conditions**

---

- Guarantee only valid for products bought direct from Abcam or one of our authorized distributors