

### Anti-Hsp90 beta antibody [K3705] ab82522

KO 評価済

★★★★★ [1 Abreviews](#) [4 References](#) [画像数 3](#)

#### 製品の概要

製品名	Anti-Hsp90 beta antibody [K3705]
製品の詳細	Mouse monoclonal [K3705] to Hsp90 beta
由来種	Mouse
アプリケーション	<b>適用あり:</b> IHC-P, WB
種交差性	<b>交差種:</b> Mouse, Rat, Human, Chinese hamster
免疫原	Recombinant human Hsp90 beta protein
ポジティブ・コントロール	WB: A431, Saos-2, HL-60, HeLa, PC-12 cells, CHO-K1 cells and 3T3 cells. IHC-P: Human pancreas FFPE tissue sections.
特記事項	<p>The Life Science industry has been in the grips of a reproducibility crisis for a number of years. Abcam is leading the way in addressing this with our range of recombinant monoclonal antibodies and knockout edited cell lines for gold-standard validation. Please check that this product meets your needs before purchasing.</p> <p>If you have any questions, special requirements or concerns, please send us an inquiry and/or contact our Support team ahead of purchase. Recommended alternatives for this product can be found below, along with publications, customer reviews and Q&amp;As</p>

#### 製品の特性

製品の状態	Liquid
保存方法	Shipped at 4°C. Upon delivery aliquot and store at -20°C. Avoid freeze / thaw cycles.
バッファー	Preservative: 0.1% Sodium azide
精製度	Ammonium Sulphate Precipitation
ポリ/モノ	モノクローナル
クローン名	K3705
アイソタイプ	IgM

#### アプリケーション

## The Abpromise guarantee

**Abpromise保証は、次のテスト済みアプリケーションにおけるab82522の使用に適用されます**

アプリケーションノートには、推奨の開始希釈率がありますが、適切な希釈率につきましてはご検討ください。

アプリケーション	Abreviews	特記事項
IHC-P		Use a concentration of 5 µg/ml. Perform heat mediated antigen retrieval with citrate buffer pH 6 before commencing with IHC staining protocol.
WB	★★★★★ (1)	1/1000. Detects a band of approximately 83 kDa (predicted molecular weight: 83 kDa).

## ターゲット情報

### 機能

Molecular chaperone that promotes the maturation, structural maintenance and proper regulation of specific target proteins involved for instance in cell cycle control and signal transduction. Undergoes a functional cycle that is linked to its ATPase activity. This cycle probably induces conformational changes in the client proteins, thereby causing their activation. Interacts dynamically with various co-chaperones that modulate its substrate recognition, ATPase cycle and chaperone function.

### 配列類似性

Belongs to the heat shock protein 90 family.

### ドメイン

The TPR repeat-binding motif mediates interaction with TPR repeat-containing proteins.

### 翻訳後修飾

Ubiquitinated in the presence of STUB1-UBE2D1 complex (in vitro).

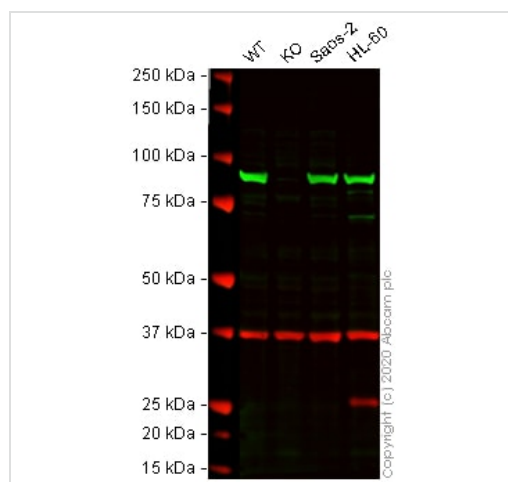
ISGylated.

S-nitrosylated; negatively regulates the ATPase activity.

### 細胞内局在

Cytoplasm. Melanosome. Identified by mass spectrometry in melanosome fractions from stage I to stage IV.

## 画像



Western blot - Anti-Hsp90 beta antibody [K3705]  
(ab82522)

**All lanes :** Anti-Hsp90 beta antibody [K3705] (ab82522) at 1/1000 dilution

**Lane 1 :** Wild-type A-431 (Human epidermoid carcinoma cell line) whole cell lysate

**Lane 2 :** HSP90AB1 knockout A-431 (Human epidermoid carcinoma cell line) whole cell lysate

**Lane 3 :** Saos-2 (Human osteosarcoma cell line) whole cell lysate

**Lane 4 :** HL-60 (Human promyelocytic leukemia cell line) whole cell lysate

Lysates/proteins at 20 µg per lane.

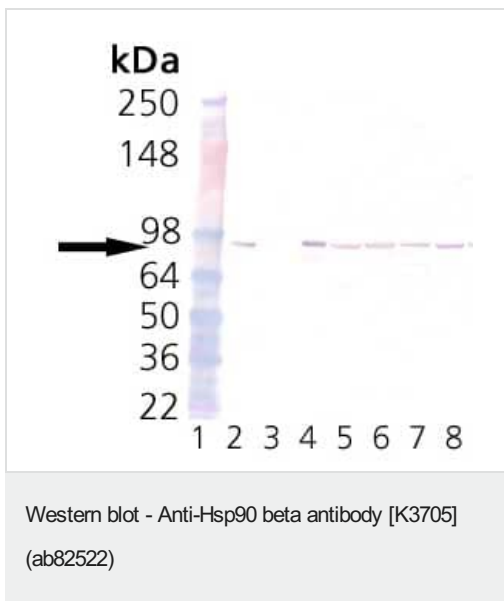
Performed under reducing conditions.

**Predicted band size:** 83 kDa

**Observed band size:** 85 kDa

**Lanes 1 - 4:** Merged signal (red and green). Green - ab82522 observed at 85 kDa. Red - loading control, **ab181602** (Rabbit Anti-GAPDH antibody [EPR16891]) observed at 37kDa.

ab82522 was shown to react with Hsp90 beta in wild-type A431 cells in western blot. Loss of signal was observed when HSP90AB1 knockout sample was used. Wild-type A431 and HSP90AB1 knockout cell lysates were subjected to SDS-PAGE. Membranes were blocked in 3% milk in TBS-T (0.1% Tween®) before incubation with ab82522 and **ab181602** (Rabbit Anti-GAPDH antibody [EPR16891]) overnight at 4°C at a 1 in 1000 Dilution and a 1 in 20000 dilution respectively. Blots were incubated with Goat anti-Rabbit IgG H&L (IRDye® 800CW) preabsorbed (**ab216773**) and Goat anti-Mouse IgG H&L (IRDye® 680RD) preabsorbed (**ab216776**) secondary antibodies at 1 in 20000 dilution for 1 hour at room temperature before imaging.



**All lanes :** Anti-Hsp90 beta antibody [K3705] (ab82522) at 1/1000 dilution

**Lane 1 :** Molecular weight markers

**Lane 2 :** Hsp90

Native Human Protein

**Lane 3 :** Hsp90 alpha Recombinant Human Protein

**Lane 4 :** Hsp90 beta Recombinant Human Protein

**Lane 5 :** HeLa cells

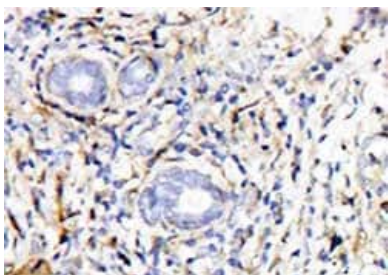
**Lane 6 :** PC-12 cells

**Lane 7 :** CHO-K1 cells

**Lane 8 :** 3T3 cells

**Predicted band size:** 83 kDa

**Observed band size:** 83 kDa



ab82522, at 1/50 dilution, staining Hsp90 beta in human breast cancer tissue by Immunohistochemistry.

Immunohistochemistry (Formalin/PFA-fixed paraffin-embedded sections) - Anti-Hsp90 beta antibody [K3705] (ab82522)

**Please note:** All products are "FOR RESEARCH USE ONLY. NOT FOR USE IN DIAGNOSTIC PROCEDURES"

### Our Abpromise to you: Quality guaranteed and expert technical support

---

- Replacement or refund for products not performing as stated on the datasheet
- Valid for 12 months from date of delivery
- Response to your inquiry within 24 hours
- We provide support in Chinese, English, French, German, Japanese and Spanish
- Extensive multi-media technical resources to help you
- We investigate all quality concerns to ensure our products perform to the highest standards

If the product does not perform as described on this datasheet, we will offer a refund or replacement. For full details of the Abpromise, please visit <https://www.abcam.co.jp/abpromise> or contact our technical team.

### Terms and conditions

---

- Guarantee only valid for products bought direct from Abcam or one of our authorized distributors