

Anti-Hsp90 antibody [D7a] ab59459

KO 評価済

★★★★★ [9 Abreviews](#) [24 References](#) [画像数 4](#)

製品の概要

製品名	Anti-Hsp90 antibody [D7a]
製品の詳細	Mouse monoclonal [D7a] to Hsp90
由来種	Mouse
特異性	Can isolate complexes of HSP90, Src kinase and cec37
アプリケーション	適用あり: WB, IHC-P, IHC-Fr, IP, ICC/IF, Flow Cyt
種交差性	交差種: Mouse, Rat, Rabbit, Chicken, Cow, Human, Pig
免疫原	Full length native protein (purified) corresponding to Chicken Hsp90 alpha aa 1-728. Full length protein HSP90 purified from chicken brain Database link: P11501
ポジティブ・コントロール	WB: HEK-293T, HEK-293, HAP1 and HeLa cell lysates. IHC-P: Human colon cancer tissue. Mouse inflamed colon tissue.
特記事項	<p>The Life Science industry has been in the grips of a reproducibility crisis for a number of years. Abcam is leading the way in addressing this with our range of recombinant monoclonal antibodies and knockout edited cell lines for gold-standard validation. Please check that this product meets your needs before purchasing.</p> <p>If you have any questions, special requirements or concerns, please send us an inquiry and/or contact our Support team ahead of purchase. Recommended alternatives for this product can be found below, along with publications, customer reviews and Q&As</p>

製品の特性

製品の状態	Liquid
保存方法	Shipped at 4°C. Store at +4°C short term (1-2 weeks). Upon delivery aliquot. Store at -20°C. Avoid freeze / thaw cycle.
バッファー	pH: 7.20 Preservative: 0.09% Sodium azide Constituents: 49% PBS, 50% Glycerol (glycerin, glycerine)
精製度	Protein G purified
ポリ/モノ	モノクローナル

クローン名 D7a
アイソタイプ IgG1

アプリケーション

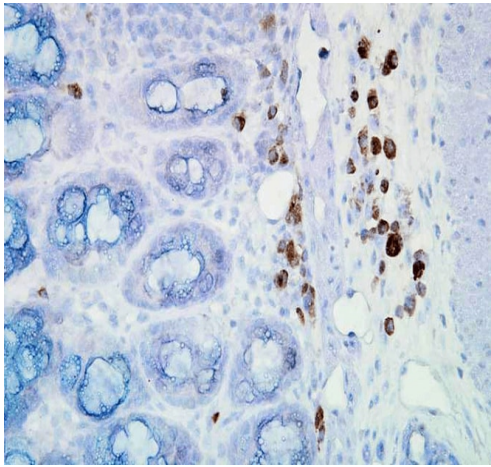
The Abpromise guarantee Abpromise保証は、次のテスト済みアプリケーションにおけるab59459の使用に適用されます
アプリケーションノートには、推奨の開始希釈率がありますが、適切な希釈率につきましてはご検討ください。

アプリケーション	Abreviews	特記事項
WB	★★★★★ (4)	1/500. Predicted molecular weight: 95 kDa.
IHC-P		1/100000. Perform heat mediated antigen retrieval with citrate buffer pH 6 before commencing with IHC staining protocol.
IHC-Fr	★★★★★ (1)	Use at an assay dependent concentration.
IP		Use at an assay dependent concentration.
ICC/IF	★★★★★ (4)	Use at an assay dependent concentration.
Flow Cyt		Use at an assay dependent concentration. ab170190 - Mouse monoclonal IgG1, is suitable for use as an isotype control with this antibody.

ターゲット情報

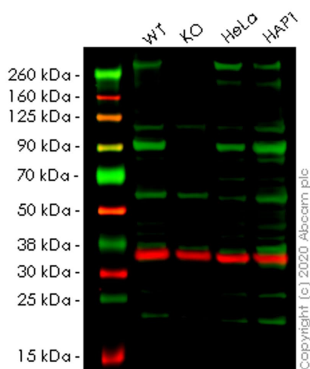
機能	Molecular chaperone that promotes the maturation, structural maintenance and proper regulation of specific target proteins involved for instance in cell cycle control and signal transduction. Undergoes a functional cycle that is linked to its ATPase activity. This cycle probably induces conformational changes in the client proteins, thereby causing their activation. Interacts dynamically with various co-chaperones that modulate its substrate recognition, ATPase cycle and chaperone function.
配列類似性	Belongs to the heat shock protein 90 family.
ドメイン	The TPR repeat-binding motif mediates interaction with TPR repeat-containing proteins like the co-chaperone STUB1.
翻訳後修飾	ISGylated. S-nitrosylated; negatively regulates the ATPase activity and the activation of eNOS by HSP90AA1.
細胞内局在	Cytoplasm. Melanosome. Identified by mass spectrometry in melanosome fractions from stage I to stage IV.

画像



Immunohistochemistry (Formalin/PFA-fixed paraffin-embedded sections) - Anti-Hsp90 antibody [D7a] (ab59459)

Immunohistochemistry analysis of ab59459 staining Hsp90 alpha in mouse inflamed colon tissue section at 1/100000 dilution for 12 hours at 4°C using antibody amplifier™ system. Biotin Goat Anti-Mouse antibody was used at 1:2000 for 1 hour at room temperature. Mayer Hematoxylin (purple/blue) nuclear stain at 200 µl for 2 minutes at room temperature was used as a counter stain. Localization: Inflammatory cells. Magnification: 40x.



Western blot - Anti-Hsp90 antibody [D7a] (ab59459)

All lanes : Anti-Hsp90 antibody [D7a] (ab59459) at 1/1000 dilution

Lane 1 : Wild-type HEK-293T (Human epithelial cell line from embryonic kidney transformed with large T antigen) whole cell lysate

Lane 2 : HSP90AA1 knockout HEK-293T (Human epithelial cell line from embryonic kidney transformed with large T antigen) whole cell lysate

Lane 3 : HeLa (Human epithelial cell line from cervix adenocarcinoma) whole cell lysate

Lane 4 : HAP1 whole cell lysate

Lysates/proteins at 20 µg per lane.

Secondary

All lanes : Goat Anti-Rabbit IgG H&L (IRDye® 680RD) preadsorbed ([ab216777](#)) at 1/10000 dilution

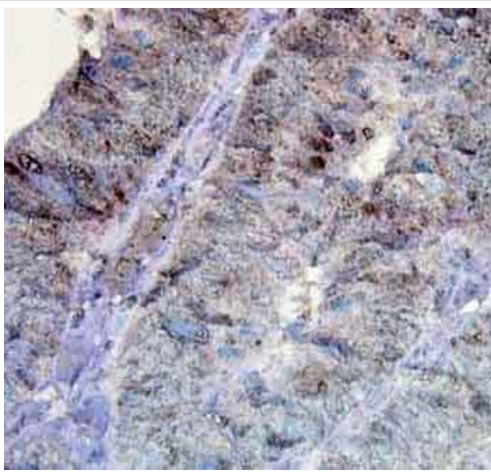
Predicted band size: 95 kDa

Observed band size: 90 kDa

Lanes 1-4: Merged signal (red and green). Green - ab59459 observed at 90 kDa. Red - loading control [ab181602](#) observed at 36 kDa.

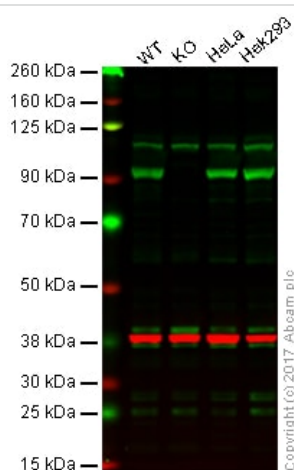
ab59459 Anti-Hsp90 antibody [D7a] was shown to specifically

react with Hsp90 in wild-type HEK-293T cells. Loss of signal was observed when knockout cell line [ab266591](#) (knockout cell lysate [ab258458](#)) was used. Wild-type and Hsp90 knockout samples were subjected to SDS-PAGE. [ab59459](#) and Anti-GAPDH antibody[EPR16891] - Loading Control ([ab181602](#)) were incubated overnight at 4°C at 1 in 1000 dilution and 1 in 20000 dilution respectively. Blots were developed with Goat anti-Rabbit IgG H&L (IRDye® 680RD) preadsorbed ([ab216777](#)) and Goat anti-Mouse IgG H&L (IRDye® 800CW) preadsorbed ([ab216772](#)) secondary antibodies at 1 in 20000 dilution for 1 hour at room temperature before imaging.



Immunohistochemistry (Formalin/PFA-fixed paraffin-embedded sections) - Anti-Hsp90 antibody [D7a] ([ab59459](#))

[ab59459](#) staining Hsp90 alpha in human colon cancer tissue section by immunohistochemistry (Bouin's fixed paraffin embedded tissue sections). Tissue underwent heat mediated antigen retrieval in microwave in citrate buffer. The primary antibody was used at dilution of 1/100,000 dilution using antibody amplifier™ system.



Western blot - Anti-Hsp90 antibody [D7a] ([ab59459](#))

Lane 1: Wild-type HAP1 whole cell lysate (20 µg)

Lane 2: Hsp90 knockout HAP1 whole cell lysate (20 µg)

Lane 3: HeLa whole cell lysate (20 µg)

Lane 4: Hek 293 whole cell lysate (20 µg)

Lanes 1 - 4: Merged signal (red and green). Green - [ab59459](#) observed at 90 kDa. Red - loading control, [ab181602](#), observed at 37 kDa.

[ab59459](#) was shown to specifically recognize Hsp90 in wild-type HAP1 cells along with additional cross reactive bands. No band was observed when Hsp90 knockout cells were examined. Wild-type and Hsp90 knockout samples were subjected to SDS-PAGE. [Ab59459](#) and [ab181602](#) (Rabbit anti GAPDH loading control) were incubated overnight at 4°C at 1/500 dilution and 1/20,000 dilution respectively. Blots were developed with Goat anti-Mouse IgG H&L (IRDye® 800CW) preabsorbed ([ab216772](#)) and Goat anti-Rabbit IgG H&L (IRDye® 680RD) preabsorbed ([ab216777](#)) secondary

antibodies at 1/20,000 dilution for 1 hour at room temperature before imaging.

Please note: All products are "FOR RESEARCH USE ONLY. NOT FOR USE IN DIAGNOSTIC PROCEDURES"

Our Abpromise to you: Quality guaranteed and expert technical support

- Replacement or refund for products not performing as stated on the datasheet
- Valid for 12 months from date of delivery
- Response to your inquiry within 24 hours
- We provide support in Chinese, English, French, German, Japanese and Spanish
- Extensive multi-media technical resources to help you
- We investigate all quality concerns to ensure our products perform to the highest standards

If the product does not perform as described on this datasheet, we will offer a refund or replacement. For full details of the Abpromise, please visit <https://www.abcam.co.jp/abpromise> or contact our technical team.

Terms and conditions

- Guarantee only valid for products bought direct from Abcam or one of our authorized distributors