

Anti-Hsp90 antibody [AC88] ab13492

★★★★★ **30 Abreviews** **108 References** 画像数 8

製品の概要

製品名	Anti-Hsp90 antibody [AC88]
製品の詳細	Mouse monoclonal [AC88] to Hsp90
由来種	Mouse
アプリケーション	適用あり: Flow Cyt (Intra), IHC-P, ICC/IF, WB
種交差性	交差種: Mouse, Rat, Human, Chinese hamster
免疫原	Full length native protein (purified) corresponding to Hsp90. from Achlya ambisexualis (water mold). Database link: Q8LLI6
エピトープ	The epitope of this antibody has been mapped to amino acid residues 604-697 of the human Hsp90 sequence.
ポジティブ・コントロール	ICC/IF: Panc-1 and HepG2 cells. WB: HeLa Cell Lysate (Heat Shocked), Hsp90 Protein; HepG2 cell lysate; PC12 cell lysate; NIH/3T3 cell lysate; Rat2 cell lysate. IHC-P: Human spleen and testis tissue. IHC-fr: Human stomach tissue.
特記事項	<p>This product was changed from ascites to tissue culture supernatant on 22nd May 2019. Please note that the dilutions may need to be adjusted accordingly. If you have any questions, please do not hesitate to contact our scientific support team.</p> <p>The Life Science industry has been in the grips of a reproducibility crisis for a number of years. Abcam is leading the way in addressing this with our range of recombinant monoclonal antibodies and knockout edited cell lines for gold-standard validation. Please check that this product meets your needs before purchasing.</p> <p>If you have any questions, special requirements or concerns, please send us an inquiry and/or contact our Support team ahead of purchase. Recommended alternatives for this product can be found below, along with publications, customer reviews and Q&As</p>

製品の特性

製品の状態	Liquid
保存方法	Shipped at 4°C. Store at +4°C short term (1-2 weeks). Upon delivery aliquot. Store at -20°C long term. Avoid freeze / thaw cycle.
バッファー	Preservative: 0.09% Sodium azide Constituents: 49% PBS, 50% Glycerol (glycerin, glycerine)

精製度	Protein G purified
ポリ/モノ	モノクローナル
クローン名	AC88
アイソタイプ	IgG1

アプリケーション

The Abpromise guarantee **Abpromise保証は、次のテスト済みアプリケーションにおけるab13492の使用に適用されます**

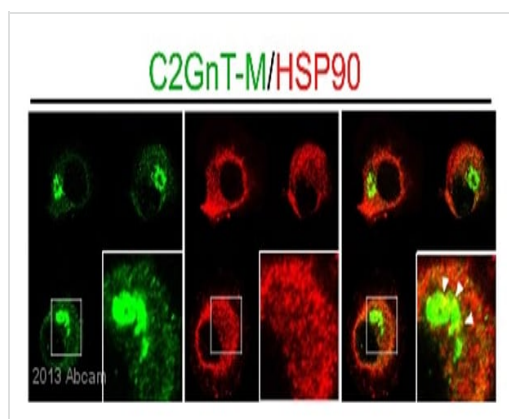
アプリケーションノートには、推奨の開始希釈率がありますが、適切な希釈率につきましてはご検討ください。

アプリケーション	Abreviews	特記事項
Flow Cyt (Intra)		Use at an assay dependent concentration. ab170190 - Mouse monoclonal IgG1, is suitable for use as an isotype control with this antibody.
IHC-P	★★★★★ (3)	Use at an assay dependent concentration.
ICC/IF	★★★★★ (7)	Use at an assay dependent concentration.
WB	★★★★★ (11)	Use at an assay dependent concentration. Detects a band of approximately 90 kDa. 84.7 (alpha) , 83.2 (beta)

ターゲット情報

機能	Molecular chaperone that promotes the maturation, structural maintenance and proper regulation of specific target proteins involved for instance in cell cycle control and signal transduction. Undergoes a functional cycle that is linked to its ATPase activity. This cycle probably induces conformational changes in the client proteins, thereby causing their activation. Interacts dynamically with various co-chaperones that modulate its substrate recognition, ATPase cycle and chaperone function.
配列類似性	Belongs to the heat shock protein 90 family.
ドメイン	The TPR repeat-binding motif mediates interaction with TPR repeat-containing proteins like the co-chaperone STUB1.
翻訳後修飾	ISGylated. S-nitrosylated; negatively regulates the ATPase activity and the activation of eNOS by HSP90AA1.
細胞内局在	Cytoplasm. Melanosome. Identified by mass spectrometry in melanosome fractions from stage I to stage IV.

画像

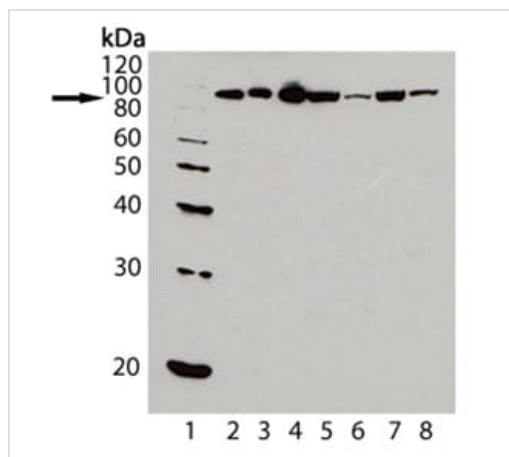


Immunocytochemistry/ Immunofluorescence - Anti-Hsp90 antibody [AC88] (ab13492)

This image is courtesy of an Abreview submitted by Armen Petrosyan

ab13492 staining Hsp90 (red) and another antibody to C2GnT-M (Golgi enzyme, green) in Panc-1 cells by ICC/IF (Immunocytochemistry/immunofluorescence). Cells were fixed with PFA and blocked with 1% serum for 1 hour at 22°C. Samples were incubated with primary antibody (1/50 1% Donkey serum in PBST) for 1 hour at 22°C. An undiluted DyLight® 594-conjugated Donkey anti-mouse IgG polyclonal was used as the secondary antibody.

This image was generated using the ascites version of the product.



Western blot - Anti-Hsp90 antibody [AC88] (ab13492)

All lanes : Anti-Hsp90 antibody [AC88] (ab13492) at 1/1000 dilution

Lane 2 : HSP90 cell lysate

Lane 3 : HSP90β cell lysate

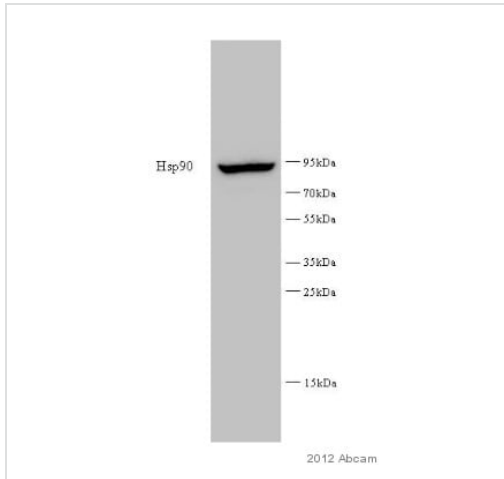
Lane 4 : HSP90α cell lysate

Lane 5 : HeLa (heat shocked) cell lysate

Lane 6 : NIH/3T3 (Heat shocked) cell lysate

Lanes 7-8 : PC-12 (Heat shocked) cell lysate

This image was generated using the ascites version of the product.



Western blot - Anti-Hsp90 antibody [AC88] (ab13492)
This image is courtesy of an anonymous Abreview

Anti-Hsp90 antibody [AC88] (ab13492) at 1/1000 dilution + Human fibroblast whole cell lysate at 40 µg

Secondary

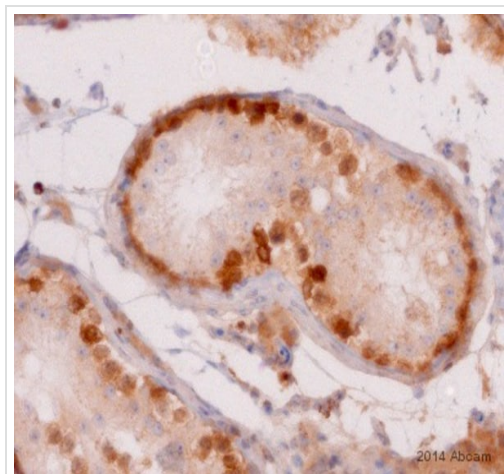
HRP-conjugated goat anti-mouse polyclonal IgG at 1/2000 dilution

Developed using the ECL technique.

Exposure time: 20 seconds

Blocked with 5% Milk for 2 hours at 22°C

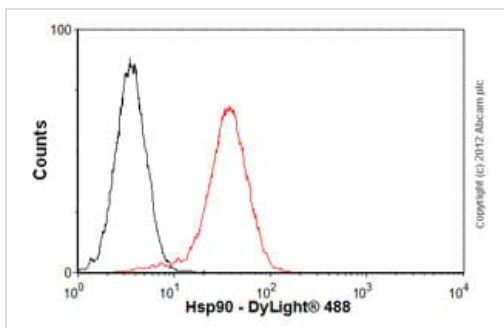
This image was generated using the ascites version of the product.



Immunohistochemistry (Formalin/PFA-fixed paraffin-embedded sections) - Anti-Hsp90 antibody [AC88] (ab13492)
This image is courtesy of an Abreview submitted by Rudolf Jung

ab13492 staining Hsp90 in Human testis tissue sections by Immunohistochemistry (IHC-P - paraformaldehyde-fixed, paraffin-embedded sections). Tissue was fixed with paraformaldehyde and antigen retrieval was by heat mediation in a TRIS-EDTA Buffer. Samples were incubated with primary antibody (1/500) for 30 minutes at 20°C. A HRP-conjugated Goat anti-rabbit/mouse IgG polyclonal was used as the secondary antibody.

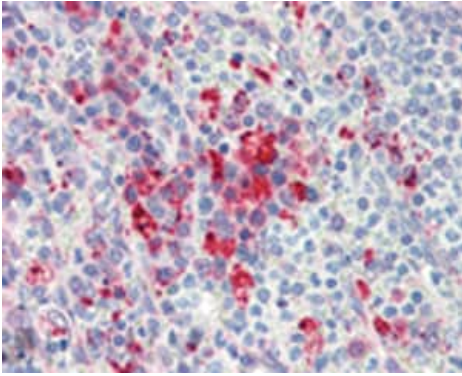
This image was generated using the ascites version of the product.



Flow Cytometry (Intracellular) - Anti-Hsp90 antibody [AC88] (ab13492)

Overlay histogram showing HeLa cells stained with ab13492 (red line). The cells were fixed with 80% methanol (5 min) and then permeabilized with 0.1% PBS-Tween for 20 min. The cells were then incubated in 1x PBS / 10% normal goat serum ([ab7481](#)) / 0.3M glycine to block non-specific protein-protein interactions followed by the antibody (ab13492, 1µg/1x10⁶ cells) for 30 min at 22°C. The secondary antibody used was DyLight® 488 goat anti-mouse IgG (H+L) ([ab96879](#)) at 1/500 dilution for 30 min at 22°C. Isotype control antibody (black line) was mouse IgG1 [ICIGG1] ([ab91353](#), 2µg/1x10⁶ cells) used under the same conditions. Acquisition of >5,000 events was performed.

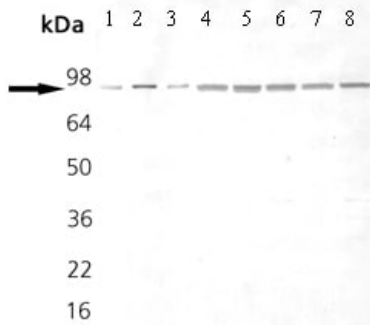
This image was generated using the ascites version of the product.



Immunohistochemistry (Formalin/PFA-fixed paraffin-embedded sections) - Anti-Hsp90 antibody [AC88] (ab13492)

ab13492 staining Hsp90 in Human spleen tissue sections by Immunohistochemistry (IHC-P - paraformaldehyde-fixed, paraffin-embedded sections). Samples were incubated with primary antibody (10 ug/ml).

This image was generated using the ascites version of the product.



Western blot - Anti-Hsp90 antibody [AC88] (ab13492)

All lanes : Anti-Hsp90 antibody [AC88] (ab13492) at 1/1000 dilution

Lane 1 : Hsp90 native human protein

Lane 2 : Hsp90 beta recombinant human protein

Lane 3 : Hsp90 alpha recombinant human protein

Lane 4 : Cell lysates prepared from heat shocked Hela cells

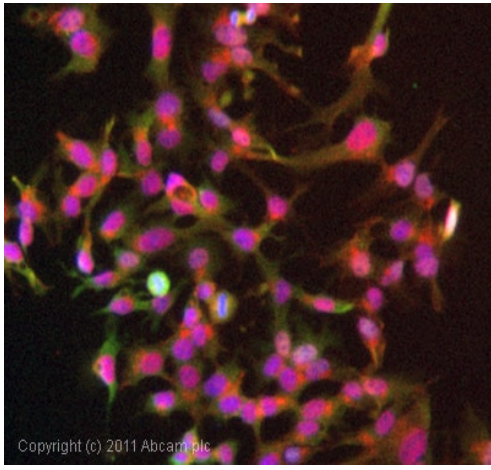
Lane 5 : Cell lysates prepared from heat shocked 3T3 cells

Lane 6 : Cell lysates prepared from heat shocked PC-12 cells

Lane 7 : Cell lysates prepared from heat shocked CHO-K1 cells

Lane 8 : Cell lysates prepared from heat shocked Rat-2 cells

This image was generated using the ascites version of the product.



Immunocytochemistry/ Immunofluorescence - Anti-Hsp90 antibody [AC88] (ab13492)

ICC/IF image of ab13492 stained HepG2 cells (**ab7900**). The cells were 4% PFA fixed (10 min) and then incubated in 1%BSA / 10% normal goat serum / 0.3M glycine in 0.1% PBS-Tween for 1h to permeabilise the cells and block non-specific protein-protein interactions. The cells were then incubated with the antibody (ab13492, 5µg/ml) overnight at +4°C. The secondary antibody (green) was DyLight® 488 goat anti-mouse IgG - H&L, pre-adsorbed (**ab96879**) used at a 1/250 dilution for 1h. Alexa Fluor® 594 WGA was used to label plasma membranes (red) at a 1/200 dilution for 1h. DAPI was used to stain the cell nuclei (blue) at a concentration of 1.43µM.

This image was generated using the ascites version of the product.

Please note: All products are "FOR RESEARCH USE ONLY. NOT FOR USE IN DIAGNOSTIC PROCEDURES"

Our Abpromise to you: Quality guaranteed and expert technical support

- Replacement or refund for products not performing as stated on the datasheet
- Valid for 12 months from date of delivery
- Response to your inquiry within 24 hours
- We provide support in Chinese, English, French, German, Japanese and Spanish
- Extensive multi-media technical resources to help you
- We investigate all quality concerns to ensure our products perform to the highest standards

If the product does not perform as described on this datasheet, we will offer a refund or replacement. For full details of the Abpromise, please visit <https://www.abcam.co.jp/abpromise> or contact our technical team.

Terms and conditions

- Guarantee only valid for products bought direct from Abcam or one of our authorized distributors