

Anti-Hsp60 antibody [LK-2] ab59458

★★★★★ [1 Abreviews](#) [6 References](#) [画像数 5](#)

製品の概要

製品名	Anti-Hsp60 antibody [LK-2]
製品の詳細	Mouse monoclonal [LK-2] to Hsp60
由来種	Mouse
特異性	Detects ~60kDa.
アプリケーション	適用あり: IHC-P, WB
種交差性	交差種: Mouse, Human
免疫原	Human Hsp60 produced through recombinant DNA methods in <i>E.coli</i>
ポジティブ・コントロール	HeLa cell lysate
特記事項	<p>The Life Science industry has been in the grips of a reproducibility crisis for a number of years. Abcam is leading the way in addressing this with our range of recombinant monoclonal antibodies and knockout edited cell lines for gold-standard validation. Please check that this product meets your needs before purchasing.</p> <p>If you have any questions, special requirements or concerns, please send us an inquiry and/or contact our Support team ahead of purchase. Recommended alternatives for this product can be found below, along with publications, customer reviews and Q&As</p>

製品の特性

製品の状態	Liquid
保存方法	Shipped at 4°C. Store at -20°C. Stable for 12 months at -20°C.
バッファー	Preservative: 0.09% Sodium azide Constituents: PBS, 50% Glycerol (glycerin, glycerine)
ポリ/モノ	モノクローナル
クローン名	LK-2
アイソタイプ	IgG1

アプリケーション

The Abpromise guarantee

Abpromise保証は、 次のテスト済みアプリケーションにおけるab59458の使用に適用されます

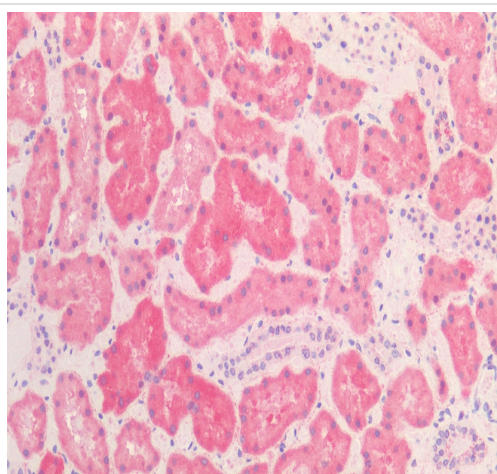
アプリケーションノートには、推奨の開始希釈率がありますが、適切な希釈率につきましてはご検討ください。

アプリケーション	Abreviews	特記事項
IHC-P		1/100.
WB	★★★★★ (1)	1/40000. Predicted molecular weight: 60 kDa.

ターゲット情報

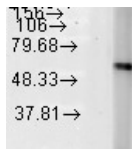
機能	Implicated in mitochondrial protein import and macromolecular assembly. May facilitate the correct folding of imported proteins. May also prevent misfolding and promote the refolding and proper assembly of unfolded polypeptides generated under stress conditions in the mitochondrial matrix.
関連疾患	Defects in HSPD1 are a cause of spastic paraplegia autosomal dominant type 13 (SPG13) [MIM:605280]. Spastic paraplegia is a degenerative spinal cord disorder characterized by a slow, gradual, progressive weakness and spasticity of the lower limbs. Defects in HSPD1 are the cause of leukodystrophy hypomyelinating type 4 (HLD4) [MIM:612233]; also called mitochondrial HSP60 chaperonopathy or MitCHAP-60 disease. HLD4 is a severe autosomal recessive hypomyelinating leukodystrophy. Clinically characterized by infantile-onset rotary nystagmus, progressive spastic paraplegia, neurologic regression, motor impairment, profound mental retardation. Death usually occurs within the first two decades of life.
配列類似性	Belongs to the chaperonin (HSP60) family.
細胞内局在	Mitochondrion matrix.

画像



Immunohistochemistry analysis of Paraffin Embedded Human kidney tissue using Mouse Anti-HSP60 Antibody, Clone LK2 (SMC-111) at 1/100 dilution.

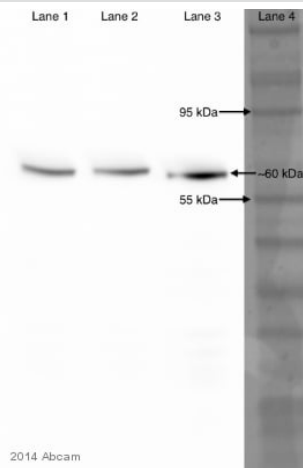
Immunohistochemistry (Formalin/PFA-fixed paraffin-embedded sections) - Anti-Hsp60 antibody [LK-2] (ab59458)



Western blot - Anti-Hsp60 antibody [LK-2] (ab59458)

Anti-Hsp60 antibody [LK-2] (ab59458) at 1/1000 dilution + HeLa cell lysate

Predicted band size: 60 kDa



Western blot - Anti-Hsp60 antibody [LK-2] (ab59458)

This image is courtesy of an anonymous Abreview

Lanes 1-3 : Anti-Hsp60 antibody [LK-2] (ab59458) at 1/4000 dilution

Lanes 1-3 : Saccharomyces cerevisiae whole cell lysate at 6900000 cells

Lane 4 : Ladder

Secondary

Lanes 1-2 : HRP-conjugated goat anti-mouse IgG monoclonal at 1/5000 dilution

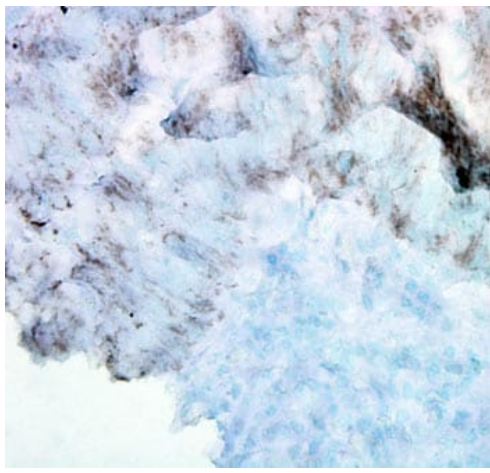
Lane 3 : HRP-conjugated goat anti-mouse IgG monoclonal at 1/2000 dilution

Performed under reducing conditions.

Predicted band size: 60 kDa

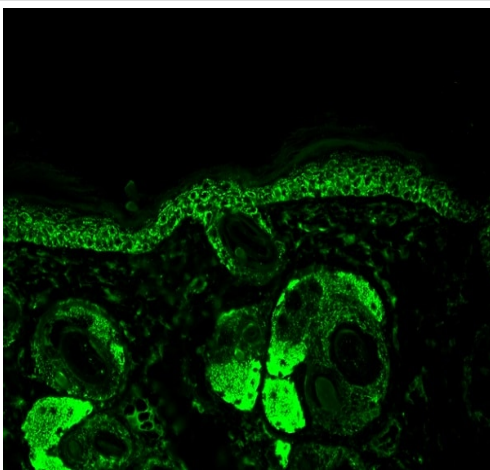
Observed band size: 60 kDa

Exposure time: 25 seconds



Immunohistochemistry (Formalin/PFA-fixed paraffin-embedded sections) - Anti-Hsp60 antibody [LK-2] (ab59458)

ab59464 at 100,000 dilution staining Hsp60 alpha in human colon tissue section by Immunohistochemistry (Bouin's fixed paraffin embedded tissue sections). Tissue underwent heat mediated antigen retrieval in microwave with 2, 5 minutes incubation intervals in citrate buffer. An antibody amplifier™ system was used for staining. A HRP-conjugated anti mouse secondary was used at 1/10 dilution.



Immunohistochemistry (Formalin/PFA-fixed paraffin-embedded sections) - Anti-Hsp60 antibody [LK-2] (ab59458)

Paraffin-embedded mouse back skin tissue stained for Hsp60 using ab59458 at 1/100 dilution in immunohistochemical analysis. DAB staining.

Please note: All products are "FOR RESEARCH USE ONLY. NOT FOR USE IN DIAGNOSTIC PROCEDURES"

Our Abpromise to you: Quality guaranteed and expert technical support

- Replacement or refund for products not performing as stated on the datasheet
- Valid for 12 months from date of delivery
- Response to your inquiry within 24 hours
- We provide support in Chinese, English, French, German, Japanese and Spanish
- Extensive multi-media technical resources to help you
- We investigate all quality concerns to ensure our products perform to the highest standards

If the product does not perform as described on this datasheet, we will offer a refund or replacement. For full details of the Abpromise,

please visit <https://www.abcam.co.jp/abpromise> or contact our technical team.

Terms and conditions

- Guarantee only valid for products bought direct from Abcam or one of our authorized distributors