

Anti-Hsp60 antibody [1D11BD8] - Mitochondrial Marker ab110312

★★★★★ **5 Abreviews** **4 References** **画像数 5**

製品の概要

製品名	Anti-Hsp60 antibody [1D11BD8] - Mitochondrial Marker
製品の詳細	Mouse monoclonal [1D11BD8] to Hsp60 - Mitochondrial Marker
由来種	Mouse
アプリケーション	適用あり: IHC-P, WB, ICC/IF, Flow Cyt
種交差性	交差種: Human
免疫原	Full length native protein (purified). This information is proprietary to Abcam and/or its suppliers.
ポジティブ・コントロール	Human heart tissue HepG2 Fibroblast cells HeLa cells Human normal colon FFPE tissue.
特記事項	<p>This antibody clone is manufactured by Abcam. If you require a custom buffer formulation or conjugation for your experiments, please contact orders@abcam.com.</p> <p>The Life Science industry has been in the grips of a reproducibility crisis for a number of years. Abcam is leading the way in addressing this with our range of recombinant monoclonal antibodies and knockout edited cell lines for gold-standard validation. Please check that this product meets your needs before purchasing.</p> <p>If you have any questions, special requirements or concerns, please send us an inquiry and/or contact our Support team ahead of purchase. Recommended alternatives for this product can be found below, along with publications, customer reviews and Q&As</p> <p>Product was previously marketed under the MitoSciences sub-brand.</p>

製品の特性

製品の状態	Liquid
保存方法	Shipped at 4°C. Store at +4°C. Do Not Freeze.
バッファー	pH: 7.5 Preservative: 0.02% Sodium azide Constituent: HEPES buffered saline
精製度	Proprietary Purification
特記事項(精製)	The antibody was produced in vitro using hybridomas grown in serum-free medium, and then purified by biochemical fractionation. Purity >95% by SDS-PAGE.

ポリ/モノ	モノクローナル
クローン名	1D11BD8
アイソタイプ	IgG1
軽鎖の種類	kappa

アプリケーション

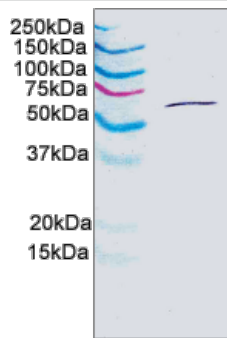
The Abpromise guarantee **Abpromise保証は、次のテスト済みアプリケーションにおけるab110312の使用に適用されます**
 アプリケーションノートには、推奨の開始希釈率がありますが、適切な希釈率につきましてはご検討ください。

アプリケーション	Abreviews	特記事項
IHC-P	★★★★★ (1)	Use a concentration of 5 µg/ml.
WB	★★★★☆ (2)	Use a concentration of 5 µg/ml. Predicted molecular weight: 61 kDa.
ICC/IF	★★★★★ (2)	Use a concentration of 1 µg/ml.
Flow Cyt		Use a concentration of 1 µg/ml. ab170190 - Mouse monoclonal IgG1, is suitable for use as an isotype control with this antibody.

ターゲット情報

機能	Implicated in mitochondrial protein import and macromolecular assembly. May facilitate the correct folding of imported proteins. May also prevent misfolding and promote the refolding and proper assembly of unfolded polypeptides generated under stress conditions in the mitochondrial matrix.
関連疾患	Defects in HSPD1 are a cause of spastic paraplegia autosomal dominant type 13 (SPG13) [MIM:605280]. Spastic paraplegia is a degenerative spinal cord disorder characterized by a slow, gradual, progressive weakness and spasticity of the lower limbs. Defects in HSPD1 are the cause of leukodystrophy hypomyelinating type 4 (HLD4) [MIM:612233]; also called mitochondrial HSP60 chaperonopathy or MitCHAP-60 disease. HLD4 is a severe autosomal recessive hypomyelinating leukodystrophy. Clinically characterized by infantile-onset rotary nystagmus, progressive spastic paraplegia, neurologic regression, motor impairment, profound mental retardation. Death usually occurs within the first two decades of life.
配列類似性	Belongs to the chaperonin (HSP60) family.
細胞内局在	Mitochondrion matrix.

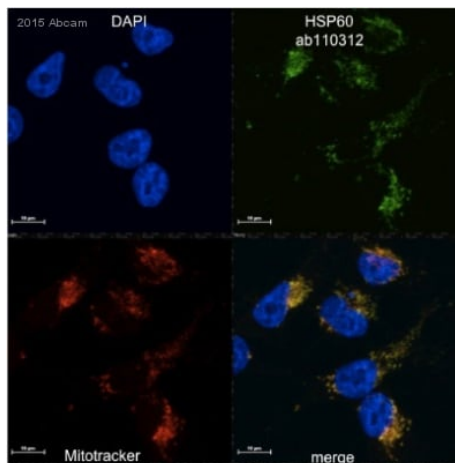
画像



Western blot - Anti-Hsp60 antibody [1D11BD8] - Mitochondrial Marker (ab110312)

Anti-Hsp60 antibody [1D11BD8] - Mitochondrial Marker (ab110312) at 5 µg/ml + HepG2 whole cells at 10 µg

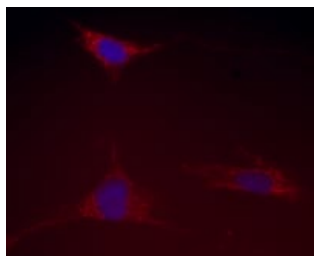
Predicted band size: 61 kDa



Immunocytochemistry/ Immunofluorescence - Anti-Hsp60 antibody [1D11BD8] - Mitochondrial Marker (ab110312)

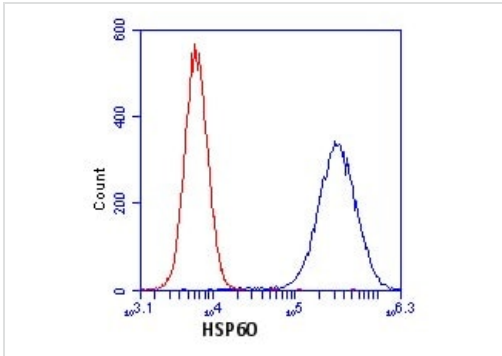
This image is courtesy of an anonymous Abreview

ab110312 staining Hsp60 in MDA MB 231 cells by ICC/IF (Immunocytochemistry/immunofluorescence). Cells were fixed with paraformaldehyde, permeabilized with 1% Triton X-100 and blocked with 10% BSA for 1 hour at 21°C. Samples were incubated with primary antibody (1/100 in BSA + 0.02% Tween20) for 1 hour at 16°C. A DyLight® 550-conjugated goat anti-mouse IgG polyclonal (1/500) was used as the secondary antibody.



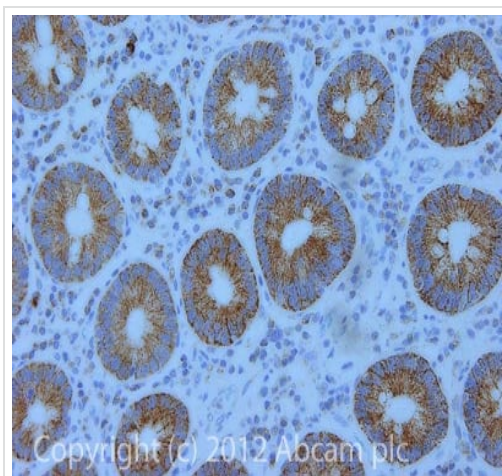
Immunocytochemistry/ Immunofluorescence - Anti-Hsp60 antibody [1D11BD8] - Mitochondrial Marker (ab110312)

Immunocytochemistry image of stained fibroblast cells. The cells were paraformaldehyde fixed (4%, 20 minutes) and Triton X-100 permeabilized (0.1%, 15 minutes). The cells were incubated with the ab110312 antibody (1 µg/mL) for 2 hours at room temperature or over night at 4°C. The secondary antibody was (red) Alexa Fluor® 594 goat anti-mouse IgG (H+L) at a 1/1000 dilution for 1 hour. 10% Goat serum was used as the blocking agent.



Flow Cytometry - Anti-Hsp60 antibody [1D11BD8] - Mitochondrial Marker (ab110312)

HeLa cells were stained with 1 µg/mL ab110312 (blue) or an equal amount of an isotype control antibody (red) and analyzed by flow cytometry.



Immunohistochemistry (Formalin/PFA-fixed paraffin-embedded sections) - Anti-Hsp60 antibody [1D11BD8] - Mitochondrial Marker (ab110312)

IHC image of Hsp60 staining in Human normal colon formalin fixed paraffin embedded tissue section, performed on a Leica Bond™ system using the standard protocol F. The section was pre-treated using heat mediated antigen retrieval with sodium citrate buffer (pH6, epitope retrieval solution 1) for 20 mins. The section was then incubated with ab110312, 5µg/ml, for 15 mins at room temperature and detected using an HRP conjugated compact polymer system. DAB was used as the chromogen. The section was then counterstained with haematoxylin and mounted with DPX.

For other IHC staining systems (automated and non-automated) customers should optimize variable parameters such as antigen retrieval conditions, primary antibody concentration and antibody incubation times

Please note: All products are "FOR RESEARCH USE ONLY. NOT FOR USE IN DIAGNOSTIC PROCEDURES"

Our Abpromise to you: Quality guaranteed and expert technical support

- Replacement or refund for products not performing as stated on the datasheet
- Valid for 12 months from date of delivery
- Response to your inquiry within 24 hours
- We provide support in Chinese, English, French, German, Japanese and Spanish
- Extensive multi-media technical resources to help you
- We investigate all quality concerns to ensure our products perform to the highest standards

If the product does not perform as described on this datasheet, we will offer a refund or replacement. For full details of the Abpromise, please visit <https://www.abcam.co.jp/abpromise> or contact our technical team.

Terms and conditions

- Guarantee only valid for products bought direct from Abcam or one of our authorized distributors