

Anti-Hsp27 antibody [5D7] ab114067

[3 References](#) [画像数 5](#)

製品の概要

製品名	Anti-Hsp27 antibody [5D7]
製品の詳細	Mouse monoclonal [5D7] to Hsp27
由来種	Mouse
アプリケーション	適用あり: WB, IHC-P, Flow Cyt, ICC/IF
種交差性	交差種: Rat, Human
免疫原	Purified recombinant fragment of human Hsp27 expressed in <i>E. Coli</i> .
ポジティブ・コントロール	WB: HeLa; A549; Jurkat; A431; HEK293; HepG2 and PC-12 cell lysates. IHC-P: Brain tissues; esophageal cancer tissues.
特記事項	<p>This product was changed from ascites to supernatant. Lot no's high than GR146269-8 are from Tissue Culture Supernatant</p> <p>The Life Science industry has been in the grips of a reproducibility crisis for a number of years. Abcam is leading the way in addressing this with our range of recombinant monoclonal antibodies and knockout edited cell lines for gold-standard validation. Please check that this product meets your needs before purchasing.</p> <p>If you have any questions, special requirements or concerns, please send us an inquiry and/or contact our Support team ahead of purchase. Recommended alternatives for this product can be found below, along with publications, customer reviews and Q&As</p>

製品の特性

製品の状態	Liquid
保存方法	Shipped at 4°C. Upon delivery aliquot and store at -20°C. Avoid freeze / thaw cycles.
バッファー	Preservative: 0.05% Sodium azide Constituent: PBS
精製度	Protein G purified
特記事項(精製)	Purified from tissue culture supernatant.
ポリ/モノ	モノクローナル
クローン名	5D7
アイソタイプ	IgG1

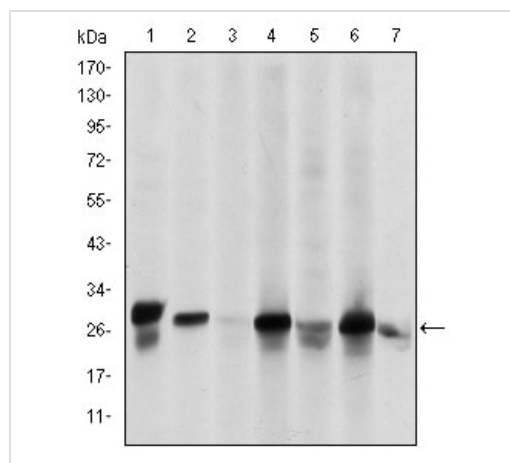
アプリケーション

The Abpromise guarantee **Abpromise保証は、次のテスト済みアプリケーションにおけるab114067の使用に適用されます**
アプリケーションノートには、推奨の開始希釈率がありますが、適切な希釈率につきましてはご検討ください。

アプリケーション	Abreviews	特記事項
WB		1/500 - 1/2000. Predicted molecular weight: 27 kDa.
IHC-P		1/200 - 1/1000.
Flow Cyt		1/200 - 1/400. ab170190 - Mouse monoclonal IgG1, is suitable for use as an isotype control with this antibody.
ICC/IF		1/200 - 1/1000.

ターゲット情報

機能	Involved in stress resistance and actin organization.
組織特異性	Detected in all tissues tested: skeletal muscle, heart, aorta, large intestine, small intestine, stomach, esophagus, bladder, adrenal gland, thyroid, pancreas, testis, adipose tissue, kidney, liver, spleen, cerebral cortex, blood serum and cerebrospinal fluid. Highest levels are found in the heart and in tissues composed of striated and smooth muscle.
関連疾患	<p>Defects in HSPB1 are the cause of Charcot-Marie-Tooth disease type 2F (CMT2F) [MIM:606595]. CMT2F is a form of Charcot-Marie-Tooth disease, the most common inherited disorder of the peripheral nervous system. Charcot-Marie-Tooth disease is classified in two main groups on the basis of electrophysiologic properties and histopathology: primary peripheral demyelinating neuropathy or CMT1, and primary peripheral axonal neuropathy or CMT2. Neuropathies of the CMT2 group are characterized by signs of axonal regeneration in the absence of obvious myelin alterations, normal or slightly reduced nerve conduction velocities, and progressive distal muscle weakness and atrophy. Nerve conduction velocities are normal or slightly reduced. CMT2F onset is between 15 and 25 years with muscle weakness and atrophy usually beginning in feet and legs (peroneal distribution). Upper limb involvement occurs later. CMT2F inheritance is autosomal dominant.</p> <p>Defects in HSPB1 are a cause of distal hereditary motor neuronopathy type 2B (HMN2B) [MIM:608634]. Distal hereditary motor neuronopathies constitute a heterogeneous group of neuromuscular disorders caused by selective impairment of motor neurons in the anterior horn of the spinal cord, without sensory deficit in the posterior horn. The overall clinical picture consists of a classical distal muscular atrophy syndrome in the legs without clinical sensory loss. The disease starts with weakness and wasting of distal muscles of the anterior tibial and peroneal compartments of the legs. Later on, weakness and atrophy may expand to the proximal muscles of the lower limbs and/or to the distal upper limbs.</p>
配列類似性	Belongs to the small heat shock protein (HSP20) family.
翻訳後修飾	Phosphorylated in MCF-7 cells on exposure to protein kinase C activators and heat shock.
細胞内局在	Cytoplasm. Nucleus. Cytoplasm > cytoskeleton > spindle. Cytoplasmic in interphase cells. Colocalizes with mitotic spindles in mitotic cells. Translocates to the nucleus during heat shock and resides in sub-nuclear structures known as SC35 speckles or nuclear splicing speckles.



Western blot - Anti-Hsp27 antibody [5D7]
(ab114067)

All lanes : Anti-Hsp27 antibody [5D7] (ab114067) at 1/500 dilution

Lane 1 : HeLa cell lysate

Lane 2 : A549 cell lysate

Lane 3 : Jurkat cell lysate

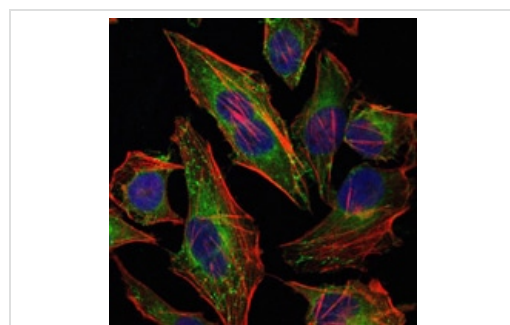
Lane 4 : A431 cell lysate

Lane 5 : HEK293 cell lysate

Lane 6 : HepG2 cell lysate

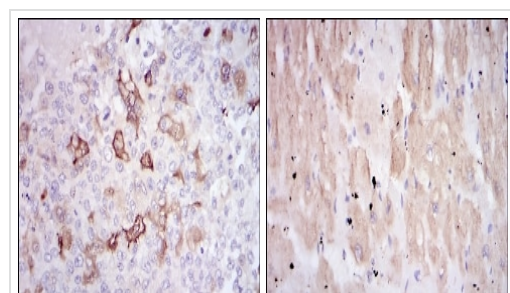
Lane 7 : PC-12 cell lysate

Predicted band size: 27 kDa



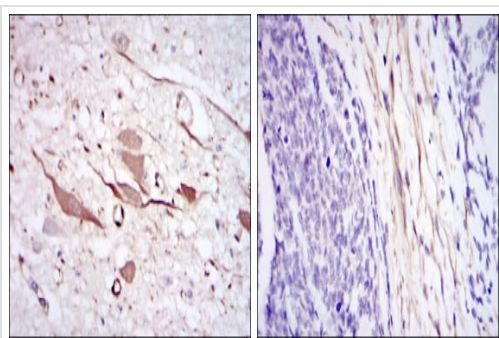
Immunocytochemistry/ Immunofluorescence - Anti-Hsp27 antibody [5D7] (ab114067)

Immunofluorescence analysis of HeLa cells using ab114067 at 1/200 dilution (green). Blue: DRAQ5 fluorescent DNA dye. Red: Actin filaments have been labeled with Alexa Fluor-555 phalloidin.



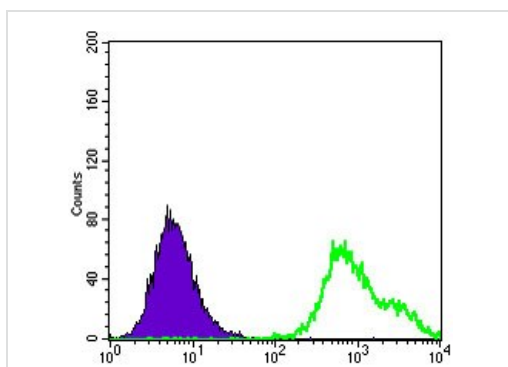
Immunohistochemistry (Formalin/PFA-fixed paraffin-embedded sections) - Anti-Hsp27 antibody [5D7]
(ab114067)

Immunohistochemical analysis of paraffin embedded breast cancer tissues (left) and cardiac muscle tissues (right) using ab114067 at 1/200 dilution with DAB staining.



Immunohistochemical analysis of paraffin embedded brain tissues (left) and esophageal cancer tissues (right) using ab114067 at 1/200 dilution with DAB staining.

Immunohistochemistry (Formalin/PFA-fixed paraffin-embedded sections) - Anti-Hsp27 antibody [5D7] (ab114067)



Flow cytometric analysis of HepG2 cells using ab114067 at 1/200 dilution (green) and negative control (purple).

Flow Cytometry - Anti-Hsp27 antibody [5D7] (ab114067)

Please note: All products are "FOR RESEARCH USE ONLY. NOT FOR USE IN DIAGNOSTIC PROCEDURES"

Our Abpromise to you: Quality guaranteed and expert technical support

- Replacement or refund for products not performing as stated on the datasheet
- Valid for 12 months from date of delivery
- Response to your inquiry within 24 hours
- We provide support in Chinese, English, French, German, Japanese and Spanish
- Extensive multi-media technical resources to help you
- We investigate all quality concerns to ensure our products perform to the highest standards

If the product does not perform as described on this datasheet, we will offer a refund or replacement. For full details of the Abpromise, please visit <https://www.abcam.co.jp/abpromise> or contact our technical team.

Terms and conditions

-
- Guarantee only valid for products bought direct from Abcam or one of our authorized distributors