


### Anti-hSET1/SET1 antibody ab70378

★★★★★ [3 Abreviews](#) [18 References](#) [画像数 4](#)

#### 製品の概要

製品名	Anti-hSET1/SET1 antibody
製品の詳細	Rabbit polyclonal to hSET1/SET1
由来種	Rabbit
アプリケーション	<b>適用あり:</b> ChIP, IHC-P, ChIP/Chip, WB, IP, ICC/IF
種交差性	<b>交差種:</b> Mouse, Rat, Human <b>交差が予測される動物種:</b> Rabbit, Horse, Guinea pig, Cow, Dog, Pig, Chimpanzee, Rhesus monkey, Gorilla, Chinese hamster, Orangutan, Elephant 
免疫原	Synthetic peptide corresponding to Human hSET1/SET1. Database link: <a href="#">O15047</a>
特記事項	<p>The Life Science industry has been in the grips of a reproducibility crisis for a number of years. Abcam is leading the way in addressing this with our range of recombinant monoclonal antibodies and knockout edited cell lines for gold-standard validation. Please check that this product meets your needs before purchasing.</p> <p>If you have any questions, special requirements or concerns, please send us an inquiry and/or contact our Support team ahead of purchase. Recommended alternatives for this product can be found below, along with publications, customer reviews and Q&amp;As</p>

#### 製品の特性

製品の状態	Liquid
保存方法	Shipped at 4°C. Store at +4°C short term (1-2 weeks). Upon delivery aliquot. Store at -20°C. Avoid freeze / thaw cycle.
バッファー	pH: 7 Preservative: 0.09% Sodium azide Constituent: Tris citrate/phosphate
精製度	Immunogen affinity purified
ポリ/モノ	ポリクローナル
アイソタイプ	IgG

#### アプリケーション

## The Abpromise guarantee

**Abpromise保証は、次のテスト済みアプリケーションにおけるab70378の使用に適用されます**

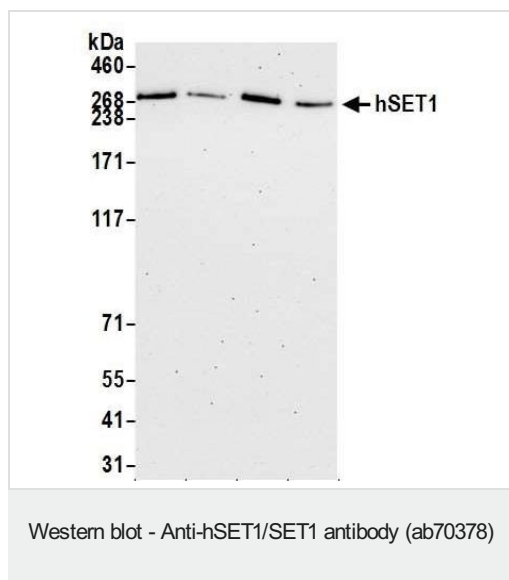
アプリケーションノートには、推奨の開始希釈率がありますが、適切な希釈率につきましてはご検討ください。

アプリケーション	Abreviews	特記事項
ChIP		Use at an assay dependent concentration.
IHC-P	★★★★★ (1)	1/2000 - 1/10000. Perform heat mediated antigen retrieval with citrate buffer pH 6 before commencing with IHC staining protocol.
ChIP/Chip		Use 10 µg for µg of chromatin.
WB	★★★★★ (1)	1/10000 - 1/25000. Detects a band of approximately 260-280 kDa (predicted molecular weight: 186 kDa).
IP		Use at 2-10 µg/mg of lysate.
ICC/IF	★★★★★ (1)	Use at an assay dependent concentration. Use with paraformaldehyde or methanol-fixed cells.

## ターゲット情報

機能	Histone methyltransferase that specifically methylates 'Lys-4' of histone H3, when part of the SET1 histone methyltransferase (HMT) complex, but not if the neighboring 'Lys-9' residue is already methylated. H3 'Lys-4' methylation represents a specific tag for epigenetic transcriptional activation. The non-overlapping localization with SETD1B suggests that SETD1A and SETD1B make non-redundant contributions to the epigenetic control of chromatin structure and gene expression.
配列類似性	Contains 1 post-SET domain. Contains 1 RRM (RNA recognition motif) domain. Contains 1 SET domain.
細胞内局在	Nucleus speckle. Chromosome. Localizes to a largely non-overlapping set of euchromatic nuclear speckles with SETD1B, suggesting that SETD1A and SETD1B each bind to a unique set of target genes.

## 画像



**All lanes :** Anti-hSET1/SET1 antibody (ab70378) at 1/25000 dilution

**Lane 1 :** HEK293T Whole cell lysate

**Lane 2 :** HeLa Whole cell lysate

**Lane 3 :** Jurkat Whole cell lysate

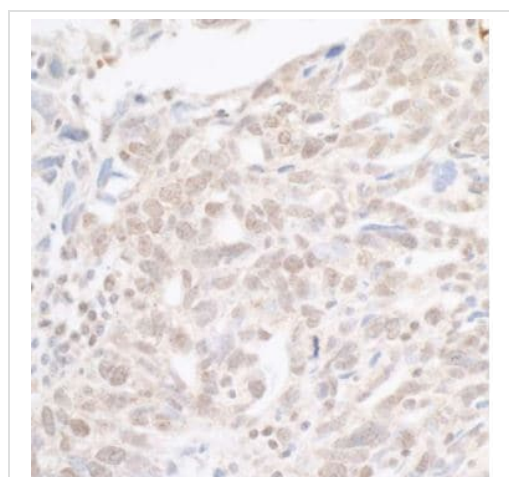
**Lane 4 :** Hep-G2 Whole cell lysate

Lysates/proteins at 10 µg per lane.

**Predicted band size:** 186 kDa

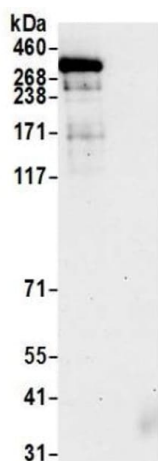
cells prepared using NETN lysis buffer

Detection: Chemiluminescence with an exposure time of 75 seconds.



Formalin-fixed, paraffin-embedded human ovarian carcinoma tissue stained for hSET1/SET1 using ab70378 at 1/5000 dilution in immunohistochemical analysis. Secondary: HRP-conjugated goat anti-rabbit IgG. Detection: DAB.

Immunohistochemistry (Formalin/PFA-fixed paraffin-embedded sections) - Anti-hSET1/SET1 antibody (ab70378)

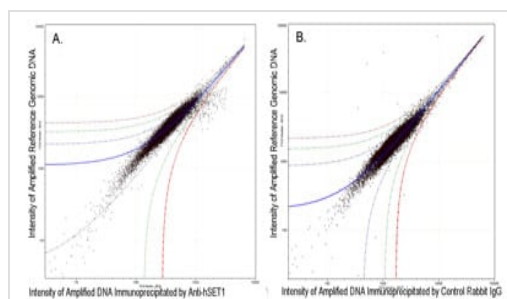


Immunoprecipitation - Anti-hSET1/SET1 antibody  
(ab70378)

hSET1/SET1 was immunoprecipitated from 293T nuclear extracts with 6 µg/mg lysate ab70378. Western blot was performed from the immunoprecipitate using ab70378 at 1/1000 dilution.

Lane 1: ab70378 IP in 293T nuclear extract.

Lane 2: Control IgG IP in 293T nuclear extract.



ChIP on chip - Anti-hSET1/SET1 antibody (ab70378)

Ab70378 (10 µg) was used to immunoprecipitate chromatin from K562 cells. Immunoprecipitated and reference DNA were amplified by ligation-mediated PCR and the products labeled with fluorescent dUTPs. The labeled ChIP and reference DNA were pooled, hybridized to a DNA microarray and analyzed. As a control a similar experiment was performed using normal rabbit IgG.

**Please note:** All products are "FOR RESEARCH USE ONLY. NOT FOR USE IN DIAGNOSTIC PROCEDURES"

### Our Abpromise to you: Quality guaranteed and expert technical support

- Replacement or refund for products not performing as stated on the datasheet
- Valid for 12 months from date of delivery
- Response to your inquiry within 24 hours
- We provide support in Chinese, English, French, German, Japanese and Spanish
- Extensive multi-media technical resources to help you
- We investigate all quality concerns to ensure our products perform to the highest standards

If the product does not perform as described on this datasheet, we will offer a refund or replacement. For full details of the Abpromise, please visit <https://www.abcam.co.jp/abpromise> or contact our technical team.

### Terms and conditions

- Guarantee only valid for products bought direct from Abcam or one of our authorized distributors