

HRP Anti-Vitronectin/S-Protein antibody [EP873Y] ab199310

リコンビナント RabMAb

画像数 3

製品の概要

製品名	HRP Anti-Vitronectin/S-Protein antibody [EP873Y]
製品の詳細	HRP Rabbit monoclonal [EP873Y] to Vitronectin/S-Protein
由来種	Rabbit
標識	HRP
アプリケーション	適用あり: WB, IHC-P
種交差性	交差種: Human
免疫原	Synthetic peptide. This information is proprietary to Abcam and/or its suppliers.
ポジティブ・コントロール	WB: Human serum. IHC-P: Normal human liver tissue.
特記事項	Our RabMAb [®] technology is a patented hybridoma-based technology for making rabbit monoclonal antibodies. For details on our patents, please refer to RabMAb[®] patents .

製品の特性

製品の状態	Liquid
保存方法	Shipped at 4°C. Store at +4°C short term (1-2 weeks). Upon delivery aliquot. Store at -20°C. Avoid freeze / thaw cycle. Store In the Dark.
バッファー	pH: 7.40 Preservative: 0.1% Proclin 300 Solution Constituents: PBS, 30% Glycerol (glycerin, glycerine), 1% BSA
精製度	Protein A purified
ポリ/モノ	モノクローナル
クローン名	EP873Y
アイソタイプ	IgG

アプリケーション

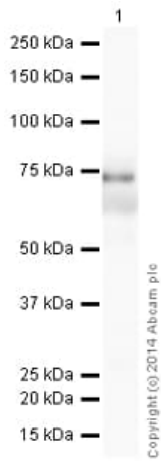
The Abpromise guarantee **Abpromise保証は、次のテスト済みアプリケーションにおけるab199310の使用に適用されず**
アプリケーションノートには、推奨の開始希釈率がありますが、適切な希釈率につきましてはご検討ください。

アプリケーション	Abreviews	特記事項
WB		1/5000. Detects a band of approximately 75 kDa.
IHC-P		1/100. Perform heat mediated antigen retrieval with citrate buffer pH 6 before commencing with IHC staining protocol. ab199507 - Rabbit monoclonal IgG (HRP), is suitable for use as an isotype control with this antibody.

ターゲット情報

機能	<p>Vitronectin is a cell adhesion and spreading factor found in serum and tissues. Vitronectin interact with glycosaminoglycans and proteoglycans. Is recognized by certain members of the integrin family and serves as a cell-to-substrate adhesion molecule. Inhibitor of the membrane-damaging effect of the terminal cytolytic complement pathway.</p> <p>Somatomedin-B is a growth hormone-dependent serum factor with protease-inhibiting activity.</p>
組織特異性	Plasma.
配列類似性	<p>Contains 4 hemopexin repeats.</p> <p>Contains 1 SMB (somatomedin-B) domain.</p>
ドメイン	The SMB domain mediates interaction with SERPINE1/PAI1. The heparin-binding domain mediates interaction with insulin.
翻訳後修飾	<p>Sulfated on 2 tyrosine residues.</p> <p>N- and O-glycosylated.</p> <p>Phosphorylation on Thr-69 and Thr-76 favors cell adhesion and spreading.</p> <p>It has been suggested that the active SMB domain may be permitted considerable disulfide bond heterogeneity or variability, thus two alternate disulfide patterns based on 3D structures are described with 1 disulfide bond conserved in both.</p> <p>Phosphorylation sites are present in the extracellular medium.</p>
細胞内局在	Secreted, extracellular space.

画像



Western blot - HRP Anti-Vitronectin/S-Protein antibody [EP873Y] (ab199310)

HRP Anti-Vitronectin/S-Protein antibody [EP873Y] (ab199310) at 1/5000 dilution + Human Serum Tissue Lysate at 10 µg

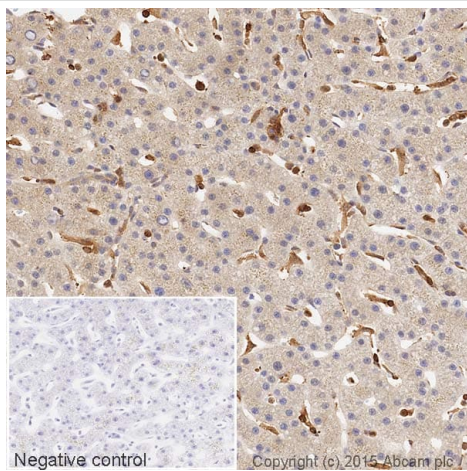
Developed using the ECL technique.

Performed under reducing conditions.

Observed band size: 74 kDa

Exposure time: 2 minutes

This blot was produced using a 4-12% Bis-tris gel under the MOPS buffer system. The gel was run at 200V for 50 minutes before being transferred onto a Nitrocellulose membrane at 30V for 70 minutes. The membrane was then blocked for an hour using 2% Bovine Serum Albumin before being incubated with ab199310 overnight at 4°C. Antibody binding was visualised using ECL development solution [ab133406](#).



Immunohistochemistry (Formalin/PFA-fixed paraffin-embedded sections) - HRP Anti-Vitronectin/S-Protein antibody [EP873Y] (ab199310)

IHC image of Vitronectin/S-Protein staining in a section of formalin-fixed paraffin-embedded normal human liver*, performed on a Leica BOND. The section was pre-treated using heat mediated antigen retrieval with sodium citrate buffer (pH6, epitope retrieval solution 1) for 20mins. The section was then incubated with ab199310 at 1/100 dilution for 15 mins at room temperature. DAB was used as the chromogen. The section was then counterstained with haematoxylin and mounted with DPX. The inset negative control image is taken from an identical assay without primary antibody.

For other IHC staining systems (automated and non-automated) customers should optimize variable parameters such as antigen retrieval conditions, primary antibody concentration and antibody incubation times.

*Tissue obtained from the Human Research Tissue Bank, supported by the NIHR Cambridge Biomedical Research Centre.

Why choose a recombinant antibody?



Research with confidence
Consistent and reproducible results



Long-term and scalable supply
Recombinant technology



Success from the first experiment
Confirmed specificity



Ethical standards compliant
Animal-free production

HRP Anti-Vitronectin/S-Protein antibody [EP873Y]
(ab199310)

Please note: All products are "FOR RESEARCH USE ONLY. NOT FOR USE IN DIAGNOSTIC PROCEDURES"

Our Abpromise to you: Quality guaranteed and expert technical support

- Replacement or refund for products not performing as stated on the datasheet
- Valid for 12 months from date of delivery
- Response to your inquiry within 24 hours
- We provide support in Chinese, English, French, German, Japanese and Spanish
- Extensive multi-media technical resources to help you
- We investigate all quality concerns to ensure our products perform to the highest standards

If the product does not perform as described on this datasheet, we will offer a refund or replacement. For full details of the Abpromise, please visit <https://www.abcam.co.jp/abpromise> or contact our technical team.

Terms and conditions

- Guarantee only valid for products bought direct from Abcam or one of our authorized distributors