


HRP Anti-Ubiquinol-Cytochrome C Reductase Core Protein I antibody [16D10AD9AH5] ab197968

画像数 3

製品の概要

製品名	HRP Anti-Ubiquinol-Cytochrome C Reductase Core Protein I antibody [16D10AD9AH5]
製品の詳細	HRP Mouse monoclonal [16D10AD9AH5] to Ubiquinol-Cytochrome C Reductase Core Protein I
由来種	Mouse
標識	HRP
アプリケーション	適用あり: WB, IHC-P
種交差性	交差種: Human 交差が予測される動物種: Mouse, Rat, Cow 
免疫原	Full length native protein (purified) corresponding to Cow Ubiquinol-Cytochrome C Reductase Core Protein I.
ポジティブ・コントロール	WB: Human heart mitochondrial lysate and HepG2 whole cell lysate. IHC-P: Normal human colon tissue.
特記事項	<p>The Life Science industry has been in the grips of a reproducibility crisis for a number of years. Abcam is leading the way in addressing this with our range of recombinant monoclonal antibodies and knockout edited cell lines for gold-standard validation. Please check that this product meets your needs before purchasing.</p> <p>If you have any questions, special requirements or concerns, please send us an inquiry and/or contact our Support team ahead of purchase. Recommended alternatives for this product can be found below, along with publications, customer reviews and Q&As</p>

製品の特性

製品の状態	Liquid
保存方法	Shipped at 4°C. Store at +4°C short term (1-2 weeks). Upon delivery aliquot. Store at -20°C. Avoid freeze / thaw cycle. Store In the Dark.
バッファー	pH: 7.40 Preservative: 0.1% Proclin 300 Solution Constituents: 30% Glycerol (glycerin, glycerine), 1% BSA, PBS
精製度	IgG fraction
特記事項(精製)	ab197968 is produced in vitro using hybridomas grown in serum-free medium, and then purified

by biochemical fractionation.

ポリ/モノ	モノクローナル
クローン名	16D10AD9AH5
アイソタイプ	IgG1
軽鎖の種類	kappa

アプリケーション

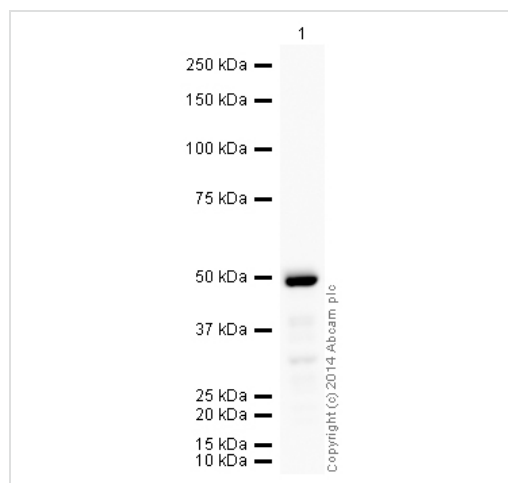
The Abpromise guarantee **Abpromise保証は、次のテスト済みアプリケーションにおけるab197968の使用に適用されず**
アプリケーションノートには、推奨の開始希釈率がありますが、適切な希釈率につきましてはご検討ください。

アプリケーション	Abreviews	特記事項
WB		1/5000. Detects a band of approximately 49 kDa (predicted molecular weight: 53 kDa).
IHC-P		1/100. Perform heat mediated antigen retrieval with citrate buffer pH 6 before commencing with IHC staining protocol.

ターゲット情報

機能	This is a component of the ubiquinol-cytochrome c reductase complex (complex III or cytochrome b-c1 complex), which is part of the mitochondrial respiratory chain. This protein may mediate formation of the complex between cytochromes c and c1.
配列類似性	Belongs to the peptidase M16 family. UQCRC1/QCR1 subfamily.
細胞内局在	Mitochondrion inner membrane.

画像



HRP Anti-Ubiquinol-Cytochrome C Reductase Core Protein I antibody [16D10AD9AH5] (ab197968) at 1/5000 dilution + Human heart tissue lysate - mitochondrial extract ([ab110337](#)) at 10 µg

Developed using the ECL technique.

Performed under reducing conditions.

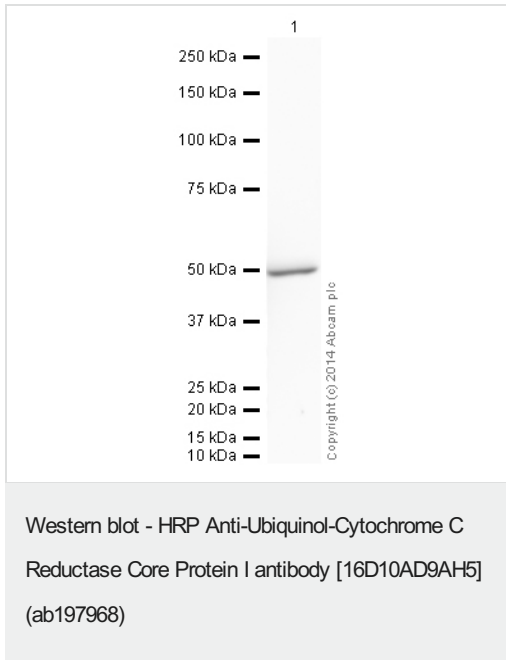
Predicted band size: 53 kDa

Observed band size: 49 kDa

Western blot - HRP Anti-Ubiquinol-Cytochrome C Reductase Core Protein I antibody [16D10AD9AH5] (ab197968)

Exposure time: 18 seconds

This blot was produced using a 4-12% Bis-tris gel under the MOPS buffer system. The gel was run at 200V for 50 minutes before being transferred onto a Nitrocellulose membrane at 30V for 70 minutes. The membrane was then blocked for an hour using 3% milk before being incubated with ab197968 overnight at 4°C. Antibody binding was visualised using ECL development solution [ab133406](#).



HRP Anti-Ubiquinol-Cytochrome C Reductase Core Protein I antibody [16D10AD9AH5] (ab197968) at 1/5000 dilution + HepG2 (Human hepatocellular liver carcinoma cell line) Whole Cell Lysate at 20 µg

Developed using the ECL technique.

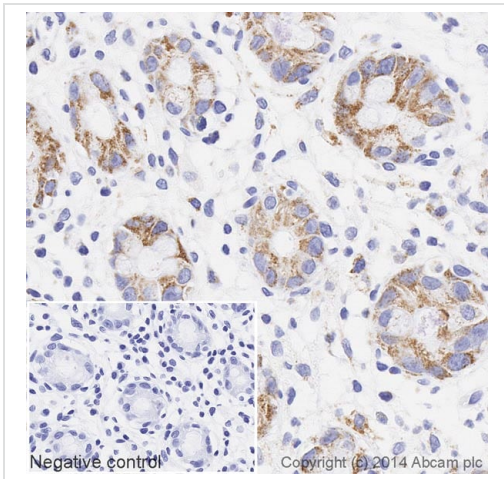
Performed under reducing conditions.

Predicted band size: 53 kDa

Observed band size: 49 kDa

Exposure time: 4 minutes

This blot was produced using a 4-12% Bis-tris gel under the MOPS buffer system. The gel was run at 200V for 50 minutes before being transferred onto a Nitrocellulose membrane at 30V for 70 minutes. The membrane was then blocked for an hour using 3% milk before being incubated with ab197968 overnight at 4°C. Antibody binding was visualised using ECL development solution [ab133406](#).



Immunohistochemistry (Formalin/PFA-fixed paraffin-embedded sections) - HRP Anti-Ubiquinol-Cytochrome C Reductase Core Protein I antibody [16D10AD9AH5] (ab197968)

IHC image of Ubiquinol-Cytochrome C Reductase Core Protein I staining in a section of formalin-fixed paraffin-embedded normal human colon*, performed on a Leica BOND. The section was pre-treated using heat mediated antigen retrieval with sodium citrate buffer (pH6, epitope retrieval solution 1) for 20 mins. The section was then incubated with ab197968, 1/100 dilution, for 15 mins at room temperature. DAB was used as the chromogen. The section was then counterstained with haematoxylin and mounted with DPX. The inset negative control image is taken from an identical assay without primary antibody.

For other IHC staining systems (automated and non-automated) customers should optimize variable parameters such as antigen retrieval conditions, primary antibody concentration and antibody incubation times.

*Tissue obtained from the Human Research Tissue Bank, supported by the NIHR Cambridge Biomedical Research Centre

Please note: All products are "FOR RESEARCH USE ONLY. NOT FOR USE IN DIAGNOSTIC PROCEDURES"

Our Abpromise to you: Quality guaranteed and expert technical support

- Replacement or refund for products not performing as stated on the datasheet
- Valid for 12 months from date of delivery
- Response to your inquiry within 24 hours
- We provide support in Chinese, English, French, German, Japanese and Spanish
- Extensive multi-media technical resources to help you
- We investigate all quality concerns to ensure our products perform to the highest standards

If the product does not perform as described on this datasheet, we will offer a refund or replacement. For full details of the Abpromise, please visit <https://www.abcam.co.jp/abpromise> or contact our technical team.

Terms and conditions

- Guarantee only valid for products bought direct from Abcam or one of our authorized distributors