

HRP Anti-Securin antibody [EPR3240] ab199239

リコンビナント **RabMAb**

1 References [画像数 3](#)

製品の概要

製品名	HRP Anti-Securin antibody [EPR3240]
製品の詳細	HRP Rabbit monoclonal [EPR3240] to Securin
由来種	Rabbit
標識	HRP
アプリケーション	適用あり: WB, IHC-P
種交差性	交差種: Human
免疫原	Synthetic peptide. This information is proprietary to Abcam and/or its suppliers.
ポジティブ・コントロール	WB: Daudi whole cell lysates. IHC-P: FFPE human testis (normal) tissue sections.
特記事項	<p>This product is a recombinant monoclonal antibody, which offers several advantages including:</p> <ul style="list-style-type: none"> - High batch-to-batch consistency and reproducibility - Improved sensitivity and specificity - Long-term security of supply - Animal-free production <p>For more information see here.</p> <p>Our RabMAb[®] technology is a patented hybridoma-based technology for making rabbit monoclonal antibodies. For details on our patents, please refer to RabMAb[®] patents.</p>

製品の特性

製品の状態	Liquid
保存方法	Shipped at 4°C. Store at +4°C short term (1-2 weeks). Upon delivery aliquot. Store at -20°C. Avoid freeze / thaw cycle. Store In the Dark.
バッファー	<p>pH: 7.40</p> <p>Preservative: 0.1% Proclin 300 Solution</p> <p>Constituents: PBS, 30% Glycerol (glycerin, glycerine), 1% BSA</p>
精製度	Protein A purified
ポリ/モノ	モノクローナル
クローン名	EPR3240
アイソタイプ	IgG

アプリケーション

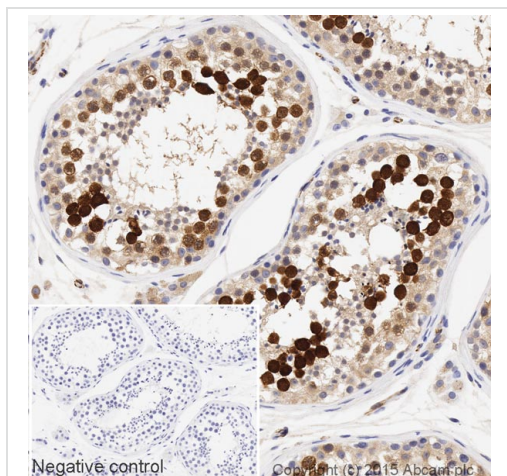
The Abpromise guarantee **Abpromise保証は、次のテスト済みアプリケーションにおけるab199239の使用に適用されます**
アプリケーションノートには、推奨の開始希釈率がありますが、適切な希釈率につきましてはご検討ください。

アプリケーション	Abreviews	特記事項
WB		1/5000. Detects a band of approximately 28 kDa (predicted molecular weight: 22 kDa).
IHC-P		1/1000. Perform heat mediated antigen retrieval with citrate buffer pH 6 before commencing with IHC staining protocol.

ターゲット情報

機能	Regulatory protein, which plays a central role in chromosome stability, in the p53/TP53 pathway, and DNA repair. Probably acts by blocking the action of key proteins. During the mitosis, it blocks Separase/ESPL1 function, preventing the proteolysis of the cohesin complex and the subsequent segregation of the chromosomes. At the onset of anaphase, it is ubiquitinated, conducting to its destruction and to the liberation of ESPL1. Its function is however not limited to a blocking activity, since it is required to activate ESPL1. Negatively regulates the transcriptional activity and related apoptosis activity of TP53. The negative regulation of TP53 may explain the strong transforming capability of the protein when it is overexpressed. May also play a role in DNA repair via its interaction with Ku, possibly by connecting DNA damage-response pathways with sister chromatid separation.
組織特異性	Expressed at low level in most tissues, except in adult testis, where it is highly expressed. Overexpressed in many patients suffering from pituitary adenomas, primary epithelial neoplasias, and esophageal cancer.
配列類似性	Belongs to the securin family.
発生段階	Low level during G1 and S phases. Peaks at M phase. During anaphase, it is degraded.
ドメイン	The N-terminal destruction box (D-box) acts as a recognition signal for degradation via the ubiquitin-proteasome pathway. The TEK-boxes are required for 'Lys-11'-linked ubiquitination and facilitate the transfer of the first ubiquitin and ubiquitin chain nucleation. TEK-boxes may direct a catalytically competent orientation of the UBE2C/UBCH10-ubiquitin thiolester with the acceptor lysine residue.
翻訳後修飾	Phosphorylated at Ser-165 by CDK1 during mitosis. Phosphorylated in vitro by ds-DNA kinase. Ubiquitinated through 'Lys-11' linkage of ubiquitin moieties by the anaphase promoting complex (APC) at the onset of anaphase, conducting to its degradation. 'Lys-11'-linked ubiquitination is mediated by the E2 ligase UBE2C/UBCH10.
細胞内局在	Cytoplasm. Nucleus.

画像

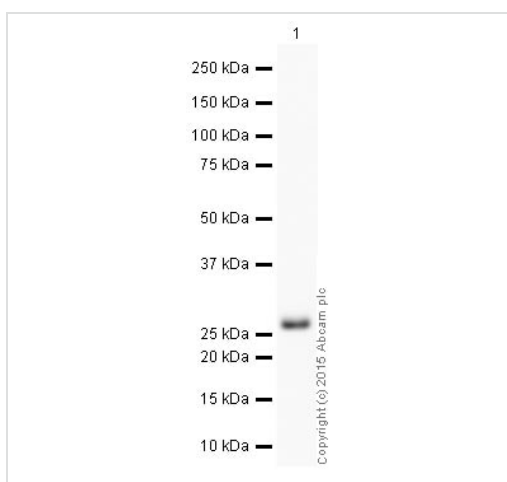


Immunohistochemistry (Formalin/PFA-fixed paraffin-embedded sections) - HRP Anti-Securin antibody [EPR3240] (ab199239)

IHC image of Securin staining in a section of formalin-fixed paraffin-embedded normal human testis tissue*, performed on a Leica BOND™. The section was pre-treated using heat mediated antigen retrieval with sodium citrate buffer (pH6, epitope retrieval solution 1) for 20mins. The section was then incubated with ab199239, 1/1000 dilution, for 15 mins at room temperature. DAB was used as the chromogen. The section was then counterstained with haematoxylin and mounted with DPX. The inset negative control image is taken from an identical assay without primary antibody.

For other IHC staining systems (automated and non-automated) customers should optimize variable parameters such as antigen retrieval conditions, primary antibody concentration and antibody incubation times.

*Tissue obtained from the Human Research Tissue Bank, supported by the NIHR Cambridge Biomedical Research Centre



Western blot - HRP Anti-Securin antibody [EPR3240] (ab199239)

HRP Anti-Securin antibody [EPR3240] (ab199239) at 1/5000 dilution + Daudi (Human Burkitt's lymphoma cell line) Whole Cell Lysate at 10 µg

Developed using the ECL technique.

Performed under reducing conditions.

Predicted band size: 22 kDa

Observed band size: 28 kDa

Exposure time: 16 minutes

This blot was produced using a 4-12% Bis-tris gel under the MES buffer system. The gel was run at 200V for 35 minutes before being transferred onto a Nitrocellulose membrane at 30V for 70 minutes. The membrane was then blocked for an hour using 3% milk before being incubated with ab199239 overnight at 4°C. Antibody binding was visualised using ECL development solution [ab133406](#).

Why choose a
recombinant antibody?



**Research with
confidence**
Consistent and
reproducible results



**Long-term and
scalable supply**
Recombinant
technology



**Success from the
first experiment**
Confirmed
specificity



**Ethical standards
compliant**
Animal-free
production

HRP Anti-Securin antibody [EPR3240] (ab199239)

Please note: All products are "FOR RESEARCH USE ONLY. NOT FOR USE IN DIAGNOSTIC PROCEDURES"

Our Abpromise to you: Quality guaranteed and expert technical support

- Replacement or refund for products not performing as stated on the datasheet
- Valid for 12 months from date of delivery
- Response to your inquiry within 24 hours
- We provide support in Chinese, English, French, German, Japanese and Spanish
- Extensive multi-media technical resources to help you
- We investigate all quality concerns to ensure our products perform to the highest standards

If the product does not perform as described on this datasheet, we will offer a refund or replacement. For full details of the Abpromise, please visit <https://www.abcam.co.jp/abpromise> or contact our technical team.

Terms and conditions

- Guarantee only valid for products bought direct from Abcam or one of our authorized distributors