

HRP Anti-Myoglobin antibody [EP3081Y] ab199243

リコンビナント RabMAb[®]

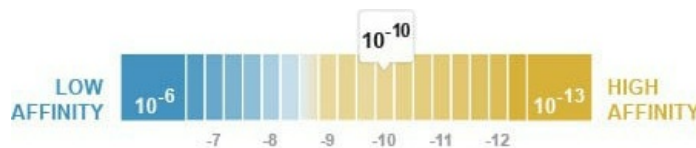
画像数 2

製品の概要

製品名	HRP Anti-Myoglobin antibody [EP3081Y]
製品の詳細	HRP Rabbit monoclonal [EP3081Y] to Myoglobin
由来種	Rabbit
標識	HRP
アプリケーション	適用あり: WB
種交差性	交差種: Mouse, Rat, Human
免疫原	Synthetic peptide. This information is proprietary to Abcam and/or its suppliers.
ポジティブ・コントロール	WB: Human, rat and mouse heart muscle tissue lysates.
特記事項	Our RabMAb [®] technology is a patented hybridoma-based technology for making rabbit monoclonal antibodies. For details on our patents, please refer to RabMAb[®] patents .

製品の特性

製品の状態	Liquid
保存方法	Shipped at 4°C. Store at +4°C short term (1-2 weeks). Upon delivery aliquot. Store at -20°C. Avoid freeze / thaw cycle. Store In the Dark.
解離定数 (K _D 値)	K _D = 1.78 x 10 ⁻¹⁰ M



[Learn more about K_D](#)

バッファー	pH: 7.40 Preservative: 0.1% Proclin 300 Solution Constituents: PBS, 30% Glycerol (glycerin, glycerine), 1% BSA
精製度	Protein A purified
ポリモノ	モノクローナル
クローン名	EP3081Y
アイソタイプ	IgG

アプリケーション

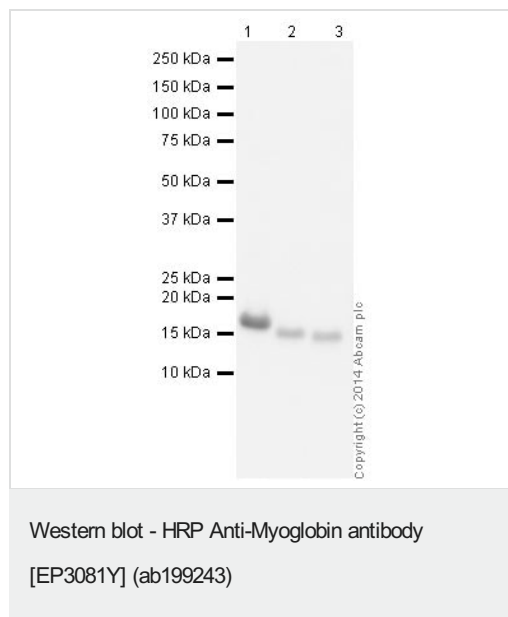
The Abpromise guarantee Abpromise保証は、次のテスト済みアプリケーションにおけるab199243の使用に適用されます
アプリケーションノートには、推奨の開始希釈率がありますが、適切な希釈率につきましてはご検討ください。

アプリケーション	Abreviews	特記事項
WB		1/5000. Detects a band of approximately 17 kDa (predicted molecular weight: 17 kDa).

ターゲット情報

機能 Serves as a reserve supply of oxygen and facilitates the movement of oxygen within muscles.
配列類似性 Belongs to the globin family.

画像



All lanes : HRP Anti-Myoglobin antibody [EP3081Y] (ab199243) at 1/5000 dilution

Lane 1 : Heart (Human) Tissue Lysate - adult normal tissue

Lane 2 : Heart (Mouse) Tissue Lysate

Lane 3 : Heart (Rat) Tissue Lysate

Lysates/proteins at 10 µg per lane.

Developed using the ECL technique.

Performed under reducing conditions.

Predicted band size: 17 kDa


Observed band size: 17 kDa

Exposure time: 2 seconds

This blot was produced using a 4-12% Bis-tris gel under the MES buffer system. The gel was run at 200V for 35 minutes before being transferred onto a Nitrocellulose membrane at 30V for 70 minutes. The membrane was then blocked for an hour using 2% Bovine Serum Albumin before being incubated with ab199243 overnight at

4°C. Antibody binding was visualised using ECL development solution [ab133406](#).

Why choose a recombinant antibody?



Research with confidence
Consistent and reproducible results

Long-term and scalable supply
Recombinant technology

Success from the first experiment
Confirmed specificity

Ethical standards compliant
Animal-free production

HRP Anti-Myoglobin antibody [EP3081Y]
(ab199243)

Please note: All products are "FOR RESEARCH USE ONLY. NOT FOR USE IN DIAGNOSTIC PROCEDURES"

Our Abpromise to you: Quality guaranteed and expert technical support

- Replacement or refund for products not performing as stated on the datasheet
- Valid for 12 months from date of delivery
- Response to your inquiry within 24 hours
- We provide support in Chinese, English, French, German, Japanese and Spanish
- Extensive multi-media technical resources to help you
- We investigate all quality concerns to ensure our products perform to the highest standards

If the product does not perform as described on this datasheet, we will offer a refund or replacement. For full details of the Abpromise, please visit <https://www.abcam.co.jp/abpromise> or contact our technical team.

Terms and conditions

- Guarantee only valid for products bought direct from Abcam or one of our authorized distributors