

HRP Anti-Myelin Basic Protein antibody ab77895

★★★★★ [2 Abreviews](#) [4 References](#) [画像数 3](#)

製品の概要

製品名	HRP Anti-Myelin Basic Protein antibody
製品の詳細	HRP Rabbit polyclonal to Myelin Basic Protein
由来種	Rabbit
標識	HRP
アプリケーション	適用あり: Sandwich ELISA
種交差性	交差種: Mouse, Human, Pig
免疫原	Full length native protein (purified) corresponding to Cow Myelin Basic Protein.
特記事項	<p>The purified antibody is conjugated to peroxidase (HRP) through reductive amination. Reductive amination with Ab/HRP ratio: 1/20.</p> <p>The Life Science industry has been in the grips of a reproducibility crisis for a number of years. Abcam is leading the way in addressing this with our range of recombinant monoclonal antibodies and knockout edited cell lines for gold-standard validation. Please check that this product meets your needs before purchasing.</p> <p>If you have any questions, special requirements or concerns, please send us an inquiry and/or contact our Support team ahead of purchase. Recommended alternatives for this product can be found below, along with publications, customer reviews and Q&As</p>

製品の特性

製品の状態	Liquid
保存方法	Shipped at 4°C. Store at +4°C.
バッファー	pH: 6.00 Constituents: 5% BSA, 2.94% Sodium citrate, Tris buffered saline
精製度	Immunogen affinity purified
ポリ/モノ	ポリクローナル
アイソタイプ	IgG

アプリケーション

The Abpromise guarantee

Abpromise保証は、 次のテスト済みアプリケーションにおけるab77895の使用に適用されます

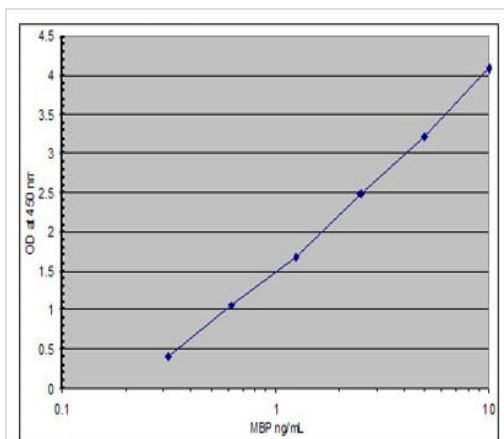
アプリケーションノートには、推奨の開始希釈率がありますが、適切な希釈率につきましてはご確認ください。

アプリケーション	Abreviews	特記事項
Sandwich ELISA		1/10000. To be used as detection antibody. Pair with <u>ab28541 - Rabbit polyclonal to Myelin Basic Protein</u>

ターゲット情報

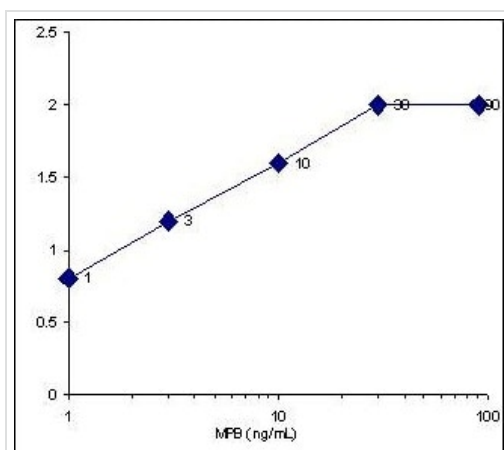
機能	The classic group of MBP isoforms (isoform 4-isoform 14) are with PLP the most abundant protein components of the myelin membrane in the CNS. They have a role in both its formation and stabilization. The smaller isoforms might have an important role in remyelination of denuded axons in multiple sclerosis. The non-classic group of MBP isoforms (isoform 1-isoform 3/Golli-MBPs) may preferentially have a role in the early developing brain long before myelination, maybe as components of transcriptional complexes, and may also be involved in signaling pathways in T-cells and neural cells. Differential splicing events combined with optional post-translational modifications give a wide spectrum of isomers, with each of them potentially having a specialized function. Induces T-cell proliferation.
組織特異性	MBP isoforms are found in both the central and the peripheral nervous system, whereas Golli-MBP isoforms are expressed in fetal thymus, spleen and spinal cord, as well as in cell lines derived from the immune system.
関連疾患	Note=The reduction in the surface charge of citrullinated and/or methylated MBP could result in a weakened attachment to the myelin membrane. This mechanism could be operative in demyelinating diseases such as chronic multiple sclerosis (MS), and fulminating MS (Marburg disease).
配列類似性	Belongs to the myelin basic protein family.
発生段階	Expression begins abruptly in 14-16 week old fetuses. Even smaller isoforms seem to be produced during embryogenesis; some of these persisting in the adult. Isoform 4 expression is more evident at 16 weeks and its relative proportion declines thereafter.
翻訳後修飾	<p>Several charge isomers of MBP; C1 (the most cationic, least modified, and most abundant form), C2, C3, C4, C5, C6, C7, C8-A and C8-B (the least cationic form); are produced as a result of optional PTM, such as phosphorylation, deamidation of glutamine or asparagine, arginine citrullination and methylation. C8-A and C8-B contain each two mass isoforms termed C8-A(H), C8-A(L), C8-B(H) and C8-B(L), (H) standing for higher and (L) for lower molecular weight. C3, C4 and C5 are phosphorylated. The ratio of methylated arginine residues decreases during aging, making the protein more cationic.</p> <p>The N-terminal alanine is acetylated (isoform 3, isoform 4, isoform 5 and isoform 6). Arg-241 was found to be 6% monomethylated and 60% symmetrically dimethylated.</p>
細胞内局在	Myelin membrane. Cytoplasmic side of myelin.

画像



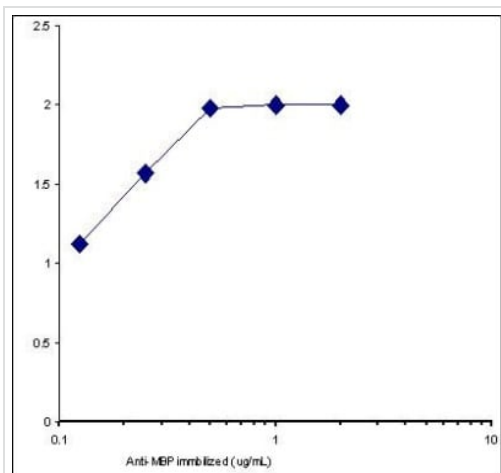
Sandwich ELISA detection of mouse Myelin Basic Protein in the plasma with un-optimized sensitivity 0.1 ng/mL.

Sandwich ELISA - HRP Anti-Myelin Basic Protein antibody (ab77895)



Fixed Immobilized Anti-MBP (**ab28541**): 2 ug/mL, 100 ul/well
 Captured Antigen: Swine MBP , range from 1 to 90 ng/mL
 Detection: anti-MBP HRP (ab77895), 0.25 ug/mL in 1% BSA and PBSt

Sandwich ELISA - HRP Anti-Myelin Basic Protein antibody (ab77895)



Sandwich ELISA - HRP Anti-Myelin Basic Protein antibody (ab77895)

Immobilized Anti-MBP (**ab28541**): range from 0.125 to 2 µg/ml, 100 µl/well
 Fixed Captured Antigen: Swine MBP, 500 ng/mL
 Detection: anti-MBP HRP (ab77895), 0.25 µg/mL in 1% BSA and PBSt

Please note: All products are "FOR RESEARCH USE ONLY. NOT FOR USE IN DIAGNOSTIC PROCEDURES"

Our Abpromise to you: Quality guaranteed and expert technical support

- Replacement or refund for products not performing as stated on the datasheet
- Valid for 12 months from date of delivery
- Response to your inquiry within 24 hours
- We provide support in Chinese, English, French, German, Japanese and Spanish
- Extensive multi-media technical resources to help you
- We investigate all quality concerns to ensure our products perform to the highest standards

If the product does not perform as described on this datasheet, we will offer a refund or replacement. For full details of the Abpromise, please visit <https://www.abcam.co.jp/abpromise> or contact our technical team.

Terms and conditions

- Guarantee only valid for products bought direct from Abcam or one of our authorized distributors