

# HRP Anti-IL-6 antibody ab106024

### 画像数 1

#### 製品の概要

---

製品名	HRP Anti-IL-6 antibody
製品の詳細	HRP Rabbit polyclonal to IL-6
由来種	Rabbit
標識	HRP
アプリケーション	適用あり: WB
種交差性	交差種: Human
免疫原	Recombinant full length protein corresponding to Human IL-6.
特記事項	<p>The Life Science industry has been in the grips of a reproducibility crisis for a number of years. Abcam is leading the way in addressing this with our range of recombinant monoclonal antibodies and knockout edited cell lines for gold-standard validation. Please check that this product meets your needs before purchasing.</p> <p>If you have any questions, special requirements or concerns, please send us an inquiry and/or contact our Support team ahead of purchase. Recommended alternatives for this product can be found below, along with publications, customer reviews and Q&amp;As</p>

#### 製品の特性

---

製品の状態	Liquid
保存方法	Shipped at 4°C. Store at +4°C.
バッファー	Preservative: 0.01% Gentamicin sulphate Constituents: 0.42% Potassium phosphate, 0.88% Sodium chloride, 1% BSA
	Do NOT add Sodium Azide!
特記事項(精製)	This purified antibody has been heated to 56°C for 30 minutes.
ポリモノ	ポリクローナル
アイソタイプ	IgG

#### アプリケーション

---

The Abpromise guarantee

**Abpromise保証は、次のテスト済みアプリケーションにおけるab106024の使用に適用されます**

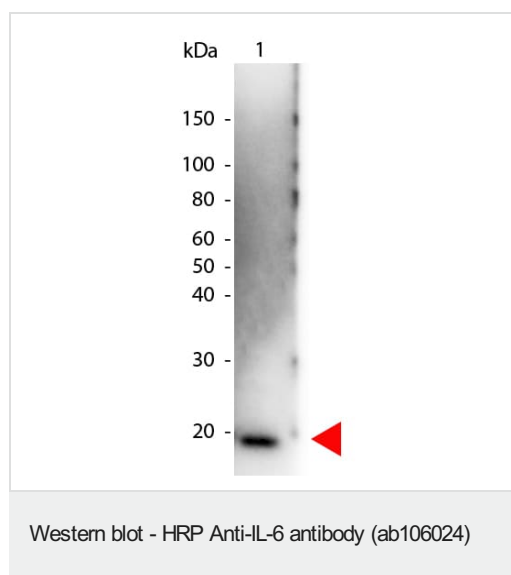
アプリケーションノートには、推奨の開始希釈率がありますが、適切な希釈率につきましてはご確認ください。

アプリケーション	Abreviews	特記事項
WB		1/1000 - 1/5000. Predicted molecular weight: 24 kDa. In Western blot analysis of natural cell products or Human body fluids, multiple bands of IL-6 will appear due to the variable amount of glycosylation on the molecule.

## ターゲット情報

機能	Cytokine with a wide variety of biological functions. It is a potent inducer of the acute phase response. Plays an essential role in the final differentiation of B-cells into Ig-secreting cells. Involved in lymphocyte and monocyte differentiation. It induces myeloma and plasmacytoma growth and induces nerve cells differentiation. Acts on B-cells, T-cells, hepatocytes, hematopoietic progenitor cells and cells of the CNS. Also acts as a myokine. It is discharged into the bloodstream after muscle contraction and acts to increase the breakdown of fats and to improve insulin resistance.
関連疾患	Genetic variations in IL6 are associated with susceptibility to rheumatoid arthritis systemic juvenile (RASJ) [MIM:604302]. An inflammatory articular disorder with systemic-onset beginning before the age of 16. It represents a subgroup of juvenile arthritis associated with severe extraarticular features and occasionally fatal complications. During active phases of the disorder, patients display a typical daily spiking fever, an evanescent macular rash, lymphadenopathy, hepatosplenomegaly, serositis, myalgia and arthritis. Note=A IL6 promoter polymorphism is associated with a lifetime risk of development of Kaposi sarcoma in HIV-infected men.
配列類似性	Belongs to the IL-6 superfamily.
翻訳後修飾	N- and O-glycosylated.
細胞内局在	Secreted.

## 画像



HRP Anti-IL-6 antibody (ab106024) at 1/1000 dilution (Human peroxidase conjugate) + Human IL-6 at 0.05 µg

**Predicted band size:** 24 kDa

**Observed band size:** 20 kDa

**Please note:** All products are "FOR RESEARCH USE ONLY. NOT FOR USE IN DIAGNOSTIC PROCEDURES"

### **Our Abpromise to you: Quality guaranteed and expert technical support**

---

- Replacement or refund for products not performing as stated on the datasheet
- Valid for 12 months from date of delivery
- Response to your inquiry within 24 hours
  
- We provide support in Chinese, English, French, German, Japanese and Spanish
- Extensive multi-media technical resources to help you
- We investigate all quality concerns to ensure our products perform to the highest standards

If the product does not perform as described on this datasheet, we will offer a refund or replacement. For full details of the Abpromise, please visit <https://www.abcam.co.jp/abpromise> or contact our technical team.

### **Terms and conditions**

---

- Guarantee only valid for products bought direct from Abcam or one of our authorized distributors