

### HRP Anti-IgM antibody [KT38] ab106742

面格新?

医薬用外劇物

#### 製品の概要

製品名	HRP Anti-IgM antibody [KT38]
製品の詳細	HRP Mouse monoclonal [KT38] to IgM
由来種	Mouse
標識	HRP
特異性	Does not cross-react with Human IgG and anti-NP IgG1, IgG2, IgG3, IgG4, IgA and IgE.
アプリケーション	<b>適用あり:</b> Sandwich ELISA
種交差性	<b>交差種:</b> Human
免疫原	Fusion protein corresponding to Human IgM. Database link: <a href="#">P01871</a>
特記事項	<p>The Life Science industry has been in the grips of a reproducibility crisis for a number of years. Abcam is leading the way in addressing this with our range of recombinant monoclonal antibodies and knockout edited cell lines for gold-standard validation. Please check that this product meets your needs before purchasing.</p> <p>If you have any questions, special requirements or concerns, please send us an inquiry and/or contact our Support team ahead of purchase. Recommended alternatives for this product can be found below, along with publications, customer reviews and Q&amp;As</p>

#### 製品の特性

製品の状態	Liquid
保存方法	Shipped at 4°C. Store at +4°C.
バッファー	Preservative: 0.01% Thimerosal (merthiolate) Constituent: PBS
精製度	Protein A purified
ポリ/モノ	モノクローナル
クローン名	KT38
アイソタイプ	IgG1

## アプリケーション

### The Abpromise guarantee

**Abpromise保証は、**次のテスト済みアプリケーションにおけるab106742の使用に適用されます

アプリケーションノートには、推奨の開始希釈率がありますが、適切な希釈率につきましてはご確認ください。

アプリケーション	Abreviews	特記事項
Sandwich ELISA		1/1000. Can be paired for Sandwich ELISA with <b>Mouse monoclonal [KT16] to IgM (ab110653)</b> .

## ターゲット情報

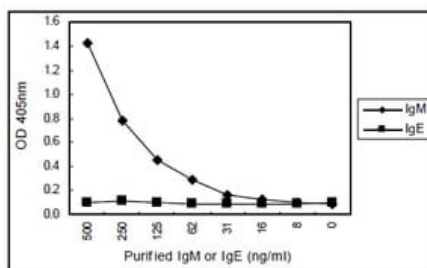
### 関連性

IgM normally constitutes about 10% of serum immunoglobulins. IgM antibody is prominent in early immune responses to most antigens and predominates in certain antibody responses such as 'natural' blood group antibodies. IgM (with IgD) is the major immunoglobulin expressed on the surface of B cells. The gene for the mu constant region contains four domains separated by short intervening sequences. Class specific anti immunoglobulin antibodies are useful for: The characterization of malignant B cell proliferations. All but acute lymphocytic leukemias share either surface or intra cytoplasmic Ig with an isotypic restriction, which suggest the monoclonal nature of the cell population. Most of the chronic lymphocytic leukemias, non Hodgkin lymphomas and Burkitt's lymphoma bear surface IgM, whereas plasmocytes from Waldenström's disease bear intracytoplasmic IgM. The other isotypes are less frequently found. On the other hand multiple myelomas are usually of the IgG or IgA type. Characterization of plasma cells in inflammatory conditions: Plasma cell typing can be of use for the classification of intestinal inflammatory conditions such as inflammatory bowel disease and allergic conditions. In the latter a specific increase in the number of IgE plasma cells can be demonstrated.

### 細胞内局在

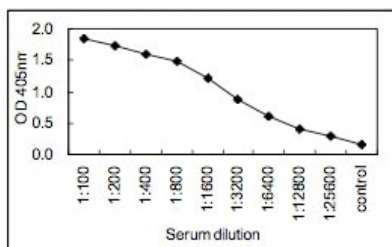
Isoform 1: Secreted. During differentiation, B lymphocytes switch from expression of membrane bound IgM to secretion of IgM. Isoform 2: Cell membrane; Single pass type I membrane protein.

## 画像



Sandwich ELISA for purified IgM using a plate coated with a mouse monoclonal to IgM and HRP-conjugated ab106742 at 1/1000. IgE is a negative control.

Sandwich ELISA - HRP Anti-IgM antibody [KT38]  
(ab106742)



Sandwich ELISA for Human serum using a plate coated with a mouse monoclonal to IgM and HRP-conjugated ab106742 at 1/1000.

Sandwich ELISA - HRP Anti-IgM antibody [KT38]  
(ab106742)

**Please note:** All products are "FOR RESEARCH USE ONLY. NOT FOR USE IN DIAGNOSTIC PROCEDURES"

### Our Abpromise to you: Quality guaranteed and expert technical support

- Replacement or refund for products not performing as stated on the datasheet
- Valid for 12 months from date of delivery
- Response to your inquiry within 24 hours
- We provide support in Chinese, English, French, German, Japanese and Spanish
- Extensive multi-media technical resources to help you
- We investigate all quality concerns to ensure our products perform to the highest standards

If the product does not perform as described on this datasheet, we will offer a refund or replacement. For full details of the Abpromise, please visit <https://www.abcam.co.jp/abpromise> or contact our technical team.

### Terms and conditions

- Guarantee only valid for products bought direct from Abcam or one of our authorized distributors