

### HRP Anti-HLA A antibody [EP1395Y] ab199555

KO 評価済 リコンビナント RabMAb

画像数 4

#### 製品の概要

製品名	HRP Anti-HLA A antibody [EP1395Y]
製品の詳細	HRP Rabbit monoclonal [EP1395Y] to HLA A
由来種	Rabbit
標識	HRP
アプリケーション	適用あり: WB, IHC-P
種交差性	交差種: Human
免疫原	Synthetic peptide. This information is proprietary to Abcam and/or its suppliers.
ポジティブ・コントロール	WB: A431, A549, Jurkat and Raji whole cell lysate. IHC-P: Normal human tonsil tissue sections.
特記事項	Our RabMAb <sup>®</sup> technology is a patented hybridoma-based technology for making rabbit monoclonal antibodies. For details on our patents, please refer to <a href="#">RabMAb<sup>®</sup> patents</a> .

#### 製品の特性

製品の状態	Liquid
保存方法	Shipped at 4°C. Store at +4°C short term (1-2 weeks). Upon delivery aliquot. Store at -20°C. Avoid freeze / thaw cycle. Store in the Dark.
バッファー	pH: 7.40 Preservative: 0.1% Proclin 300 Solution Constituents: PBS, 30% Glycerol (glycerin, glycerine), 1% BSA
精製度	Protein A purified
ポリ/モノ	モノクローナル
クローン名	EP1395Y
アイソタイプ	IgG

#### アプリケーション

The Abpromise guarantee **Abpromise保証は、次のテスト済みアプリケーションにおけるab199555の使用に適用されず**  
アプリケーションノートには、推奨の開始希釈率がありますが、適切な希釈率につきましてはご検討ください。

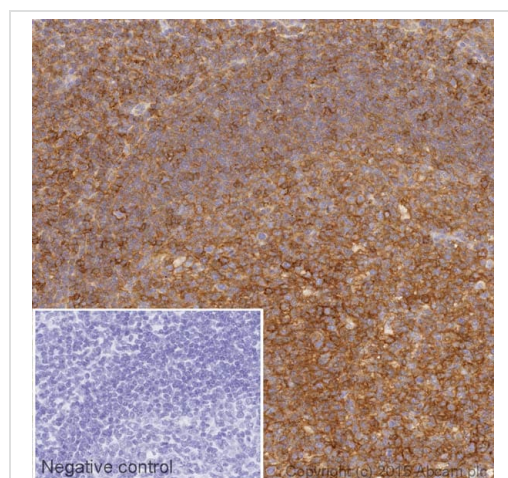
アプリケーション	Abreviews	特記事項
WB		1/10000 - 1/50000. Predicted molecular weight: 41 kDa.
IHC-P		1/100. Perform heat mediated antigen retrieval with citrate buffer pH 6 before commencing with IHC staining protocol.

## ターゲット情報

**関連性**

HLA-A belongs to the HLA class I heavy chain paralogues. This class I molecule is a heterodimer consisting of a heavy chain and a light chain (beta-2 microglobulin). The heavy chain is anchored in the membrane. Class I molecules play a central role in the immune system by presenting peptides derived from the endoplasmic reticulum lumen. They are expressed in nearly all cells. The heavy chain is approximately 45 kDa and its gene contains 8 exons. Exon 1 encodes the leader peptide, exons 2 and 3 encode the alpha1 and alpha2 domains, which both bind the peptide, exon 4 encodes the alpha3 domain, exon 5 encodes the transmembrane region, and exons 6 and 7 encode the cytoplasmic tail. Polymorphisms within exon 2 and exon 3 are responsible for the peptide binding specificity of each class one molecule. Typing for these polymorphisms is routinely done for bone marrow and kidney transplantation. Hundreds of HLA-A alleles have been described.

## 画像

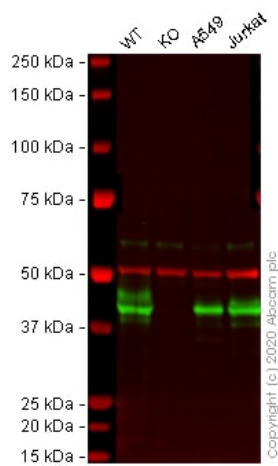


Immunohistochemistry (Formalin/PFA-fixed paraffin-embedded sections) - HRP Anti-HLA A antibody [EP1395Y] (ab199555)

IHC image of HLA A staining in a section of formalin-fixed paraffin-embedded normal human tonsil\*, performed on a Leica BOND. The section was pre-treated using heat mediated antigen retrieval with sodium citrate buffer (pH6, epitope retrieval solution 1) for 20mins. The section was then incubated with ab199555, 1/100 dilution, for 15 mins at room temperature. DAB was used as the chromogen. The section was then counterstained with haematoxylin and mounted with DPX. The inset negative control image is taken from an identical assay without primary antibody.

For other IHC staining systems (automated and non-automated) customers should optimize variable parameters such as antigen retrieval conditions, primary antibody concentration and antibody incubation times.

\*Tissue obtained from the Human Research Tissue Bank, supported by the NIHR Cambridge Biomedical Research Centre



Western blot - HRP Anti-HLA A antibody [EP1395Y] (ab199555)

**All lanes** : HRP Anti-HLA A antibody [EP1395Y] (ab199555) at 1/10000 dilution

**Lane 1** : Wild-type A431 cell lysate

**Lane 2** : HLA-A knockout A431 cell lysate

**Lane 3** : A549 cell lysate

**Lane 4** : Jurkat cell lysate

Lysates/proteins at 20 µg per lane.

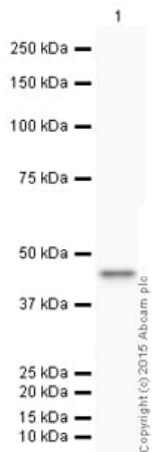
Performed under reducing conditions.

**Predicted band size:** 41 kDa

**Observed band size:** 40 kDa

**Lanes 1 -4:** Merged signal (red and green). Green - ab199555 observed at 40 kDa. Red - loading control, **ab7291** (Mouse anti-Alpha Tubulin [DM1A]) observed at 55kDa.

ab199555 was shown to react with HLA A (HRP) in wild-type A431 cells in western blot. Loss of signal was observed when HLA-A knockout sample was used. Wild-type and HLA-A knockout A431 cell lysates were subjected to SDS-PAGE. Membranes were blocked in 3% milk in TBS-T (0.1% Tween<sup>®</sup>) before incubation with ab199555 and **ab7291** (Mouse anti-Alpha Tubulin [DM1A]) overnight at 4°C at a 1 in 10000 Dilution and a 1 in 20000 dilution respectively. Blots were incubated with Goat anti-Rabbit IgG H&L (IRDye<sup>®</sup> 800CW) preabsorbed (**ab216773**) and Goat anti-Mouse IgG H&L (IRDye<sup>®</sup> 680RD) preabsorbed (**ab216776**) secondary antibodies at 1 in 20000 dilution for 1 hour at room temperature before imaging.



Western blot - HRP Anti-HLA A antibody [EP1395Y] (ab199555)

HRP Anti-HLA A antibody [EP1395Y] (ab199555) at 1/5000 dilution + Raji (Human Burkitt's lymphoma cell line) Whole Cell Lysate at 10 µg

Developed using the ECL technique.

Performed under reducing conditions.

**Predicted band size:** 41 kDa

**Observed band size:** 45 kDa

**Exposure time:** 1 minute

This blot was produced using a 4-12% Bis-tris gel under the MOPS buffer system. The gel was run at 200V for 50 minutes before being transferred onto a Nitrocellulose membrane at 30V for 70 minutes. The membrane was then blocked for an hour using 3% milk before being incubated with ab199555 overnight at 4°C. Antibody binding was visualised using ECL development solution [ab133406](#).

### Why choose a recombinant antibody?



**Research with confidence**  
Consistent and reproducible results



**Long-term and scalable supply**  
Recombinant technology



**Success from the first experiment**  
Confirmed specificity



**Ethical standards compliant**  
Animal-free production

HRP Anti-HLA A antibody [EP1395Y] (ab199555)

**Please note:** All products are "FOR RESEARCH USE ONLY. NOT FOR USE IN DIAGNOSTIC PROCEDURES"

## **Our Abpromise to you: Quality guaranteed and expert technical support**

---

- Replacement or refund for products not performing as stated on the datasheet
- Valid for 12 months from date of delivery
- Response to your inquiry within 24 hours
  
- We provide support in Chinese, English, French, German, Japanese and Spanish
- Extensive multi-media technical resources to help you
- We investigate all quality concerns to ensure our products perform to the highest standards

If the product does not perform as described on this datasheet, we will offer a refund or replacement. For full details of the Abpromise, please visit <https://www.abcam.co.jp/abpromise> or contact our technical team.

## **Terms and conditions**

---

- Guarantee only valid for products bought direct from Abcam or one of our authorized distributors