

### HRP Anti-GM-CSF antibody [KT35] ab106790

画像検索

医薬用外劇物

#### 製品の概要

製品名	HRP Anti-GM-CSF antibody [KT35]
製品の詳細	HRP Rat monoclonal [KT35] to GM-CSF
由来種	Rat
標識	HRP
アプリケーション	<b>適用あり:</b> WB, Sandwich ELISA
種交差性	<b>交差種:</b> Human
免疫原	Recombinant Human GM-CSF.
特記事項	<p>The Life Science industry has been in the grips of a reproducibility crisis for a number of years. Abcam is leading the way in addressing this with our range of recombinant monoclonal antibodies and knockout edited cell lines for gold-standard validation. Please check that this product meets your needs before purchasing.</p> <p>If you have any questions, special requirements or concerns, please send us an inquiry and/or contact our Support team ahead of purchase. Recommended alternatives for this product can be found below, along with publications, customer reviews and Q&amp;As</p>

#### 製品の特性

製品の状態	Liquid
保存方法	Shipped at 4°C. Store at +4°C.
バッファー	Preservative: 0.01% Thimerosal (merthiolate) Constituent: PBS
精製度	Protein G purified
特記事項(精製)	IgG is purified from culture supernatant through a Protein G column and labelled with horseradish peroxidase.
ポリ/モノ	モノクローナル
クローン名	KT35
アイソタイプ	IgG2a

## アプリケーション

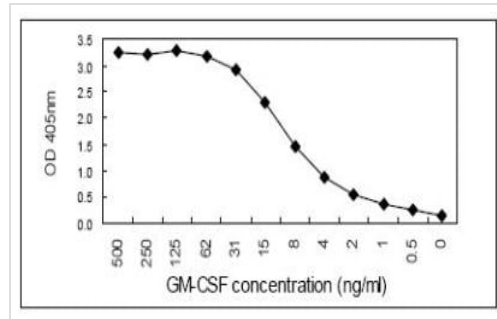
The Abpromise guarantee **Abpromise保証は、次のテスト済みアプリケーションにおけるab106790の使用に適用されます**  
アプリケーションノートには、推奨の開始希釈率がありますが、適切な希釈率につきましてはご確認ください。

アプリケーション	Abreviews	特記事項
WB		Use at an assay dependent concentration. Predicted molecular weight: 16 kDa.
Sandwich ELISA		1/1000. Can be paired for Sandwich ELISA with <b>Rat monoclonal [KT37] to GM-CSF (ab106746)</b> . Can be used as detection antibody when paired with recommended antibody.

## ターゲット情報

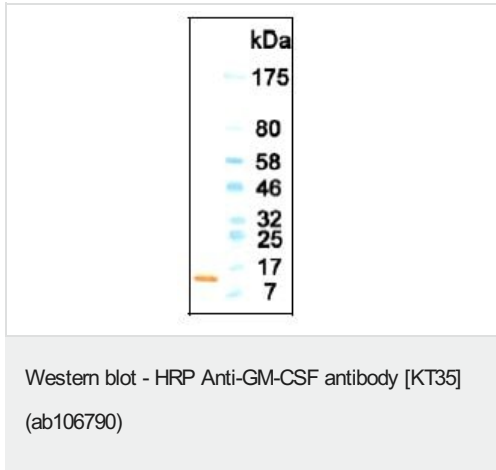
機能	Cytokine that stimulates the growth and differentiation of hematopoietic precursor cells from various lineages, including granulocytes, macrophages, eosinophils and erythrocytes.
配列類似性	Belongs to the GM-CSF family.
細胞内局在	Secreted.

## 画像



Sandwich ELISA - HRP Anti-GM-CSF antibody  
[KT35] (ab106790)

ab106790, at a 1/1000 dilution, used as the detection antibody in a Sandwich ELISA. The capture antibody is an alternative anti-Human GM-CSF monoclonal.



HRP Anti-GM-CSF antibody [KT35] (ab106790) + Recombinant protein

**Predicted band size:** 16 kDa

ab106790 used as detection antibody.

**Please note:** All products are "FOR RESEARCH USE ONLY. NOT FOR USE IN DIAGNOSTIC PROCEDURES"

### Our Abpromise to you: Quality guaranteed and expert technical support

---

- Replacement or refund for products not performing as stated on the datasheet
- Valid for 12 months from date of delivery
- Response to your inquiry within 24 hours
- We provide support in Chinese, English, French, German, Japanese and Spanish
- Extensive multi-media technical resources to help you
- We investigate all quality concerns to ensure our products perform to the highest standards

If the product does not perform as described on this datasheet, we will offer a refund or replacement. For full details of the Abpromise, please visit <https://www.abcam.co.jp/abpromise> or contact our technical team.

### Terms and conditions

---

- Guarantee only valid for products bought direct from Abcam or one of our authorized distributors