


HRP Anti-GAPDH antibody [mAbcam 9484] - Loading Control ab9482

★★★★★ [20 Abreviews](#) [208 References](#) [画像数 1](#)

製品の概要

製品名	HRP Anti-GAPDH antibody [mAbcam 9484] - Loading Control
製品の詳細	HRP Mouse monoclonal [mAbcam 9484] to GAPDH - Loading Control
由来種	Mouse
標識	HRP
アプリケーション	適用あり: WB
種交差性	交差種: Mouse, Rat, Human 交差が予測される動物種: Rabbit, Chicken, Cow, Dog, Xenopus laevis, Chinese hamster 
免疫原	Full length native protein (purified). This information is proprietary to Abcam and/or its suppliers.
ポジティブ・コントロール	WB: HeLa, HEK-293, NIH/3T3 and PC-12 whole cell lysates.
特記事項	<p>According to our customer's feedback this antibody does not recognise meningococcal GapA1 or GapA2 (GAPDH) recombinant proteins.</p> <p>This antibody has been conjugated with HRP. The concentration of the original antibody was 1 mg/ml, following conjugation the concentration observed will be higher.</p> <p>The Life Science industry has been in the grips of a reproducibility crisis for a number of years. Abcam is leading the way in addressing this with our range of recombinant monoclonal antibodies and knockout edited cell lines for gold-standard validation. Please check that this product meets your needs before purchasing.</p> <p>If you have any questions, special requirements or concerns, please send us an inquiry and/or contact our Support team ahead of purchase. Recommended alternatives for this product can be found below, along with publications, customer reviews and Q&As</p>

製品の特性

製品の状態	Liquid
保存方法	Shipped at 4°C. Store at +4°C short term (1-2 weeks). Upon delivery aliquot. Store at -20°C. Avoid freeze / thaw cycle. Store In the Dark.
バッファー	Preservative: 0.1% 10% Proclin 300 Solution Constituents: PBS, 1% BSA, 30% Glycerol (glycerin, glycerine)
精製度	IgG fraction

ポリモノ	モノクローナル
クローン名	mAbcam 9484
ミエローマ	Sp2/0-Ag14
アイソタイプ	IgG2b
軽鎖の種類	kappa

アプリケーション

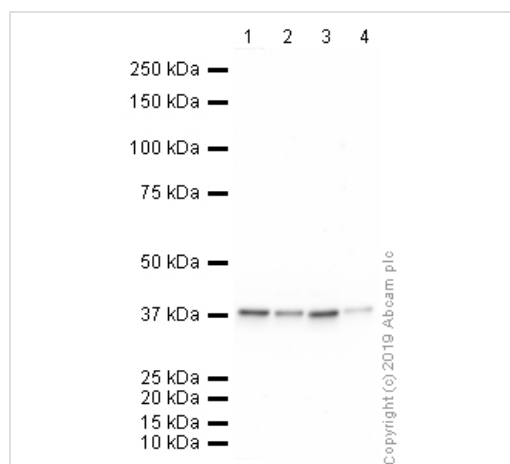
The Abpromise guarantee **Abpromise保証は、次のテスト済みアプリケーションにおけるab9482の使用に適用されます**
 アプリケーションノートには、推奨の開始希釈率がありますが、適切な希釈率につきましてはご確認ください。

アプリケーション	Abreviews	特記事項
WB	★★★★★ (20)	1/1000 - 1/5000. Detects a band of approximately 40 kDa (predicted molecular weight: 40.2 kDa). NOT SUITABLE for blocking with milk. Block in 5% BSA for 1 hour. Our labs have thoroughly investigated the blocking conditions for this ab following concerning customer feedback on the lack of signal with some vials. We found that milk significantly decreases signal and is therefore not a suitable blocking agent

ターゲット情報

機能	Has both glyceraldehyde-3-phosphate dehydrogenase and nitrosylase activities, thereby playing a role in glycolysis and nuclear functions, respectively. Participates in nuclear events including transcription, RNA transport, DNA replication and apoptosis. Nuclear functions are probably due to the nitrosylase activity that mediates cysteine S-nitrosylation of nuclear target proteins such as SIRT1, HDAC2 and PRKDC (By similarity). Glyceraldehyde-3-phosphate dehydrogenase is a key enzyme in glycolysis that catalyzes the first step of the pathway by converting D-glyceraldehyde 3-phosphate (G3P) into 3-phospho-D-glyceroyl phosphate.
パスウェイ	Carbohydrate degradation; glycolysis; pyruvate from D-glyceraldehyde 3-phosphate: step 1/5.
配列類似性	Belongs to the glyceraldehyde-3-phosphate dehydrogenase family.
翻訳後修飾	S-nitrosylation of Cys-152 leads to interaction with SIAH1, followed by translocation to the nucleus. ISGylated.
細胞内局在	Cytoplasm > cytosol. Nucleus. Cytoplasm > perinuclear region. Membrane. Translocates to the nucleus following S-nitrosylation and interaction with SIAH1, which contains a nuclear localization signal (By similarity). Postnuclear and Perinuclear regions.

画像



Western blot - HRP Anti-GAPDH antibody [mAbcam 9484] - Loading Control (ab9482)

All lanes : HRP Anti-GAPDH antibody [mAbcam 9484] - Loading Control (ab9482) at 1/1000 dilution

Lane 1 : HeLa Whole Cell Lysate

Lane 2 : Hek293 Whole Cell Lysate

Lane 3 : NIH 3T3 Whole Cell Lysate

Lane 4 : PC12 Whole Cell Lysate

Lysates/proteins at 10 µg per lane.

Developed using the ECL technique.

Performed under reducing conditions.

Predicted band size: 40.2 kDa

Observed band size: 37 kDa

Exposure time: 4 minutes

Please note: All products are "FOR RESEARCH USE ONLY. NOT FOR USE IN DIAGNOSTIC PROCEDURES"

Our Abpromise to you: Quality guaranteed and expert technical support

- Replacement or refund for products not performing as stated on the datasheet
- Valid for 12 months from date of delivery
- Response to your inquiry within 24 hours
- We provide support in Chinese, English, French, German, Japanese and Spanish
- Extensive multi-media technical resources to help you
- We investigate all quality concerns to ensure our products perform to the highest standards

If the product does not perform as described on this datasheet, we will offer a refund or replacement. For full details of the Abpromise, please visit <https://www.abcam.co.jp/abpromise> or contact our technical team.

Terms and conditions

- Guarantee only valid for products bought direct from Abcam or one of our authorized distributors