

HRP Anti-Fluorescein antibody ab19492

7 References 画像数 1

医薬用外劇物

製品の概要

製品名	HRP Anti-Fluorescein antibody
製品の詳細	HRP Rabbit polyclonal to Fluorescein
由来種	Rabbit
標識	HRP
アプリケーション	適用あり: IHC-P, WB, ELISA
種交差性	交差種: Species independent
免疫原	Fluorescein coupled to KLH
特記事項	<p>The Life Science industry has been in the grips of a reproducibility crisis for a number of years. Abcam is leading the way in addressing this with our range of recombinant monoclonal antibodies and knockout edited cell lines for gold-standard validation. Please check that this product meets your needs before purchasing.</p> <p>If you have any questions, special requirements or concerns, please send us an inquiry and/or contact our Support team ahead of purchase. Recommended alternatives for this product can be found below, along with publications, customer reviews and Q&As</p>

製品の特性

製品の状態	Liquid
保存方法	Shipped at 4°C. Store at +4°C.
バッファー	Preservative: 0.02% Thimerosal (merthiolate) Constituents: PBS, 1% BSA
特記事項 (精製)	Solid phase hapten antibody capture. Affinity purified and absorbed antibody covalently coupled to a highly purified preparation of Horseradish Peroxidase (RZ>3). Care is taken to ensure adequate conjugation while preserving maximum enzyme activity. Free enzyme is removed. Estimated substitution ratio: HRP:IgG is >1.5
ポリ/モノ	ポリクローナル
アイソタイプ	IgG

アプリケーション

The Abpromise guarantee

Abpromise保証は、次のテスト済みアプリケーションにおけるab19492の使用に適用されます

アプリケーションノートには、推奨の開始希釈率がありますが、適切な希釈率につきましてはご確認ください。

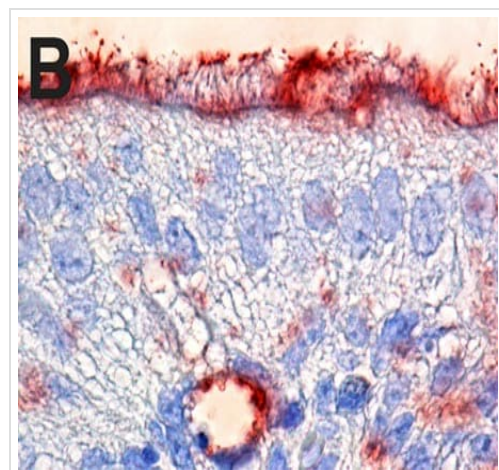
アプリケーション	Abreviews	特記事項
IHC-P		Use at an assay dependent concentration.
WB		1/20 - 1/200.
ELISA		1/200 - 1/1000.

ターゲット情報

関連性

Fluorescein is a fluorophore commonly used to label proteins - protein-fluorescein conjugates are not usually susceptible to precipitation. In addition to its relatively high absorptivity, excellent fluorescence quantum yield and good water solubility, fluorescein has an excitation maximum of 494 nm that closely matches the 488 nm spectral line of the argon-ion laser, making it an important fluorophore for confocal laser-scanning microscopy and flow cytometry applications. Its fluorescence is pH sensitive and is significantly reduced below pH 7. Fluorescein emits most strongly between 500 and 550 nm, but it has a relatively broad emission spectrum reaching to over 600 nm. Several derivatives of fluorescein are commonly used, including FITC (fluorescein isothiocyanate), carboxylates and succinimidyl esters.

画像



Immunohistochemistry (Formalin/PFA-fixed paraffin-embedded sections) - HRP Anti-Fluorescein antibody (ab19492)

Image from Jourdain E et al., PLoS One. 2011;6(9):e24155. Epub 2011 Sep 1. Fig 1.; doi:10.1371/journal.pone.0024155; September 1, 2011, PLoS ONE 6(9): e24155.

Immunohistochemical analysis of chicken trachea tissue, infected with an avian influenza virus, staining Fluorescein with ab19492. Fluorescein-labeled influenza viruses were incubated with tissue overnight at 4°C. Sections were incubated with primary antibody and the signal was amplified with a tyramide signal amplification system.

Please note: All products are "FOR RESEARCH USE ONLY. NOT FOR USE IN DIAGNOSTIC PROCEDURES"

Our Abpromise to you: Quality guaranteed and expert technical support

- Replacement or refund for products not performing as stated on the datasheet
- Valid for 12 months from date of delivery
- Response to your inquiry within 24 hours

- We provide support in Chinese, English, French, German, Japanese and Spanish
- Extensive multi-media technical resources to help you
- We investigate all quality concerns to ensure our products perform to the highest standards

If the product does not perform as described on this datasheet, we will offer a refund or replacement. For full details of the Abpromise, please visit <https://www.abcam.co.jp/abpromise> or contact our technical team.

Terms and conditions

- Guarantee only valid for products bought direct from Abcam or one of our authorized distributors