

HRP Anti-CRALBP antibody [B2] ab199992

画像数 1

製品の概要

製品名	HRP Anti-CRALBP antibody [B2]
製品の詳細	HRP Mouse monoclonal [B2] to CRALBP
由来種	Mouse
標識	HRP
アプリケーション	適用あり: WB
種交差性	交差種: Rat 交差が予測される動物種: Mouse, Cow, Human, Pig, Monkey 
免疫原	Recombinant full length protein corresponding to Human CRALBP.
ポジティブ・コントロール	WB: Rat eye lysate.
特記事項	<p>The Life Science industry has been in the grips of a reproducibility crisis for a number of years. Abcam is leading the way in addressing this with our range of recombinant monoclonal antibodies and knockout edited cell lines for gold-standard validation. Please check that this product meets your needs before purchasing.</p> <p>If you have any questions, special requirements or concerns, please send us an inquiry and/or contact our Support team ahead of purchase. Recommended alternatives for this product can be found below, along with publications, customer reviews and Q&As</p>

製品の特性

製品の状態	Liquid
保存方法	Shipped at 4°C. Store at +4°C short term (1-2 weeks). Upon delivery aliquot. Store at -20°C. Avoid freeze / thaw cycle. Store In the Dark.
バッファー	pH: 7.40 Preservative: 0.1% Proclin 300 Solution Constituents: PBS, 1% BSA, 30% Glycerol (glycerin, glycerine)
精製度	IgG fraction
ポリ/モノ	モノクローナル
クローン名	B2
アイソタイプ	IgG2a

アプリケーション

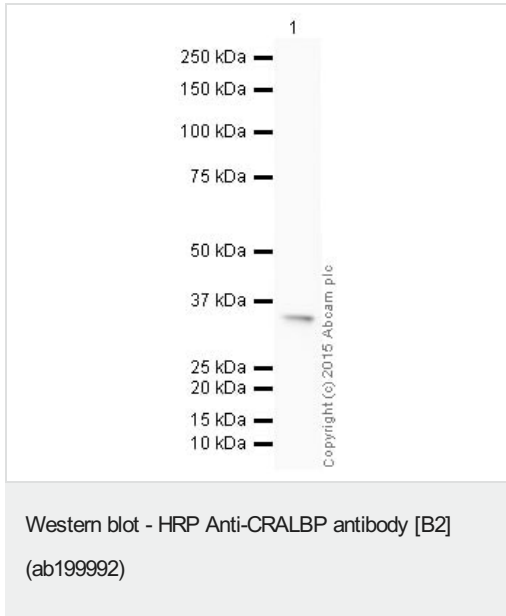
The Abpromise guarantee **Abpromise保証は、次のテスト済みアプリケーションにおけるab199992の使用に適用されず**
アプリケーションノートには、推奨の開始希釈率がありますが、適切な希釈率につきましてはご検討ください。

アプリケーション	Abreviews	特記事項
WB		1/5000. Detects a band of approximately 36 kDa (predicted molecular weight: 36 kDa).

ターゲット情報

機能	Soluble retinoid carrier essential the proper function of both rod and cone photoreceptors. Participates in the regeneration of active 11-cis-retinol and 11-cis-retinaldehyde, from the inactive 11-trans products of the rhodopsin photocycle and in the de novo synthesis of these retinoids from 11-trans metabolic precursors. The cycling of retinoids between photoreceptor and adjacent pigment epithelium cells is known as the 'visual cycle'.
組織特異性	Retina and pineal gland. Not present in photoreceptor cells but is expressed abundantly in the adjacent retinal pigment epithelium (RPE) and in the Mueller glial cells of the retina.
関連疾患	Defects in RLBP1 are a cause of retinitis pigmentosa autosomal recessive (ARRP) [MIM:268000]. RP leads to degeneration of retinal photoreceptor cells. Patients typically have night vision blindness and loss of midperipheral visual field. As their condition progresses, they lose their far peripheral visual field and eventually central vision as well. Defects in RLBP1 are the cause of Bothnia retinal dystrophy (BRD) [MIM:607475]; also known as Vasterbotten dystrophy. Affected individuals show night blindness from early childhood with features consistent with retinitis punctata albescens and macular degeneration. Defects in RLBP1 are the cause of rod-cone dystrophy Newfoundland (NFRCD) [MIM:607476]. NFRCD is a retinal dystrophy reminiscent of retinitis punctata albescens but with a substantially lower age at onset and more-rapid and distinctive progression. Rod-cone dystrophies results from initial loss of rod photoreceptors, later followed by cone photoreceptors loss. Defects in RLBP1 are a cause of fundus albipunctatus (FA) [MIM:136880]. FA is a rare form of stationary night blindness characterized by a delay in the regeneration of cone and rod photopigments.
配列類似性	Contains 1 CRAL-TRIO domain.
細胞内局在	Cytoplasm.

画像



HRP Anti-CRALBP antibody [B2] (ab199992) at 1/5000 dilution +
Eye (Rat) Tissue Lysate at 10 µg

Developed using the ECL technique.

Performed under reducing conditions.

Predicted band size: 36 kDa

Observed band size: 36 kDa

Exposure time: 3 minutes

This blot was produced using a 4-12% Bis-tris gel under the MOPS buffer system. The gel was run at 200V for 50 minutes before being transferred onto a Nitrocellulose membrane at 30V for 70 minutes. The membrane was then blocked for an hour using 3% milk before being incubated with ab199992 overnight at 4°C. Antibody binding was visualised using ECL development solution **ab133406**.

Please note: All products are "FOR RESEARCH USE ONLY. NOT FOR USE IN DIAGNOSTIC PROCEDURES"

Our Abpromise to you: Quality guaranteed and expert technical support

- Replacement or refund for products not performing as stated on the datasheet
- Valid for 12 months from date of delivery
- Response to your inquiry within 24 hours
- We provide support in Chinese, English, French, German, Japanese and Spanish
- Extensive multi-media technical resources to help you
- We investigate all quality concerns to ensure our products perform to the highest standards

If the product does not perform as described on this datasheet, we will offer a refund or replacement. For full details of the Abpromise, please visit <https://www.abcam.co.jp/abpromise> or contact our technical team.

Terms and conditions

- Guarantee only valid for products bought direct from Abcam or one of our authorized distributors