


HRP Anti-CNPase antibody [11-5B] ab201678

KO 評価済

画像数 3

製品の概要

製品名	HRP Anti-CNPase antibody [11-5B]
製品の詳細	HRP Mouse monoclonal [11-5B] to CNPase
由来種	Mouse
標識	HRP
アプリケーション	適用あり: WB, IHC-P
種交差性	<p>交差種: Mouse, Rat, Human</p> <p>交差が予測される動物種: Sheep, Rabbit, Cow, Dog, Pig, Rhesus monkey Chicken, Guinea pig</p> <p> 非交差種:</p>
免疫原	Full length native protein (purified) corresponding to Human CNPase.
ポジティブ・コントロール	WB: Human, Mouse and Rat Spinal Cord and Brain tissue lysates. IHC-P: FFPE human normal cerebral cortex tissue sections.
特記事項	<p>The Life Science industry has been in the grips of a reproducibility crisis for a number of years. Abcam is leading the way in addressing this with our range of recombinant monoclonal antibodies and knockout edited cell lines for gold-standard validation. Please check that this product meets your needs before purchasing.</p> <p>If you have any questions, special requirements or concerns, please send us an inquiry and/or contact our Support team ahead of purchase. Recommended alternatives for this product can be found below, along with publications, customer reviews and Q&As</p>

製品の特性

製品の状態	Liquid
保存方法	Shipped at 4°C. Store at +4°C short term (1-2 weeks). Upon delivery aliquot. Store at -20°C. Stable for 12 months at -20°C. Store In the Dark.
バッファー	<p>pH: 7.40</p> <p>Preservative: 0.1% Proclin 300 Solution</p> <p>Constituents: PBS, 30% Glycerol (glycerin, glycerine), 1% BSA</p> <p>Batches contain 0.4M arginine.</p>

精製度	Affinity purified
ポリ/モノ	モノクローナル
クローン名	11-5B
アイソタイプ	IgG1

アプリケーション

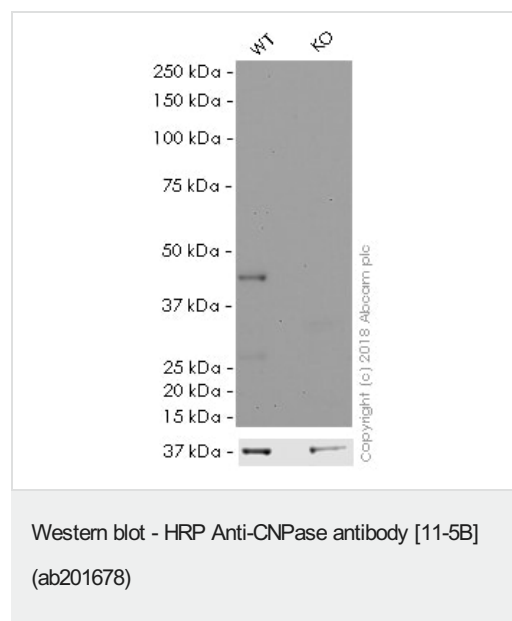
The Abpromise guarantee Abpromise保証は、次のテスト済みアプリケーションにおけるab201678の使用に適用されます
アプリケーションノートには、推奨の開始希釈率がありますが、適切な希釈率につきましてはご確認ください。

アプリケーション	Abreviews	特記事項
WB		1/5000. Detects a band of approximately 48 kDa (predicted molecular weight: 48 kDa).
IHC-P		1/100. Perform heat mediated antigen retrieval with citrate buffer pH 6 before commencing with IHC staining protocol.

ターゲット情報

配列類似性	Belongs to the cyclic nucleotide phosphodiesterase family.
細胞内局在	Membrane. Melanosome. Firmly bound to membrane structures of brain white matter. Identified by mass spectrometry in melanosome fractions from stage I to stage IV.

画像



All lanes : HRP Anti-CNPase antibody [11-5B] (ab201678) at 1/5000 dilution

Lane 1 : Wild-type HAP1 whole cell lysate

Lane 2 : CNPase knockout HAP1 whole cell lysate

Lysates/proteins at 20 µg per lane.

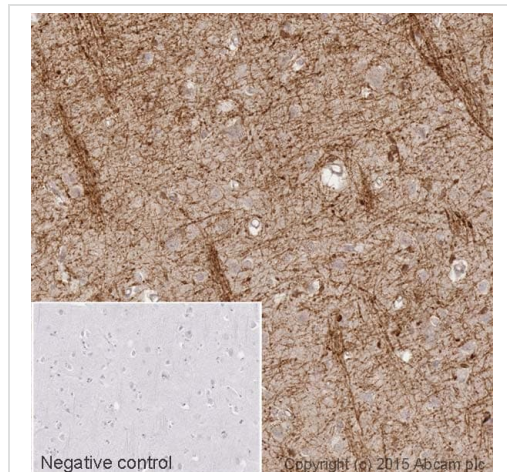
Predicted band size: 48 kDa

Observed band size: 48 kDa

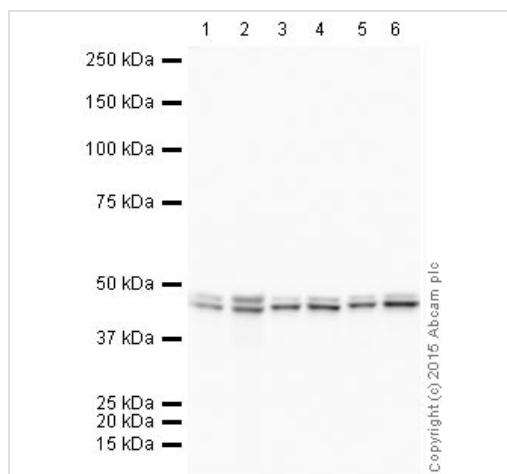
Exposure time: 20 minutes

ab201678 was shown to specifically react with CNPase in wild-type HAP1 cells as signal was lost in CNPase knockout cells. Wild-type and CNPase knockout samples were subjected to SDS-PAGE.

Ab201678 and **ab184095** (Mouse monoclonal [mAbcam 9484] to GAPDH - Loading Control (Alexa Fluor® 680) loading control) were incubated overnight at 4°C at 1/5000 dilution and 1/1000 dilution respectively. The loading control was imaged using the Licor Odyssey CLx prior to blots being developed with ECL technique.



Immunohistochemistry (Formalin/PFA-fixed paraffin-embedded sections) - HRP Anti-CNPase antibody [11-5B] (ab201678)



Western blot - HRP Anti-CNPase antibody [11-5B] (ab201678)

IHC image of CNPase staining in a section of formalin-fixed paraffin-embedded human normal cerebral cortex*. The section was pre-treated using pressure cooker heat mediated antigen retrieval with sodium citrate buffer (pH6) for 30mins, and incubated overnight at +4°C with ab201678 at 1/100 dilution. DAB was used as the chromogen (**ab103723**), diluted 1/100 and incubated for 10min at room temperature. The section was counterstained with haematoxylin and mounted with DPX. The inset negative control image is taken from an identical assay without primary antibody.

For other IHC staining systems (automated and non-automated) customers should optimize variable parameters such as antigen retrieval conditions, primary antibody concentration and antibody incubation times.

All lanes : HRP Anti-CNPase antibody [11-5B] (ab201678) at 1/5000 dilution

Lane 1 : Brain (Human) Tissue Lysate - adult normal tissue

Lane 2 : Spinal Cord (Human) Tissue Lysate - adult normal tissue

Lane 3 : Brain (Mouse) Tissue Lysate

Lane 4 : Spinal Cord (Mouse) Tissue Lysate

Lane 5 : Brain (Rat) Tissue Lysate

Lane 6 : Spinal Cord (Rat) Tissue Lysate

Lysates/proteins at 10 µg per lane.

Developed using the ECL technique.

Performed under reducing conditions.

Predicted band size: 48 kDa

Observed band size: 48 kDa

Exposure time: 6 seconds

This blot was produced using a 4-12% Bis-tris gel under the MOPS buffer system. The gel was run at 200V for 50 minutes before being transferred onto a Nitrocellulose membrane at 30V for 70 minutes. The membrane was then blocked for an hour using 2% Bovine Serum Albumin before being incubated with ab201678 overnight at 4°C. Antibody binding was visualised using ECL development solution **ab133406**.

Please note: All products are "FOR RESEARCH USE ONLY. NOT FOR USE IN DIAGNOSTIC PROCEDURES"

Our Abpromise to you: Quality guaranteed and expert technical support

- Replacement or refund for products not performing as stated on the datasheet
- Valid for 12 months from date of delivery
- Response to your inquiry within 24 hours
- We provide support in Chinese, English, French, German, Japanese and Spanish
- Extensive multi-media technical resources to help you
- We investigate all quality concerns to ensure our products perform to the highest standards

If the product does not perform as described on this datasheet, we will offer a refund or replacement. For full details of the Abpromise, please visit **<https://www.abcam.co.jp/abpromise>** or contact our technical team.

Terms and conditions

- Guarantee only valid for products bought direct from Abcam or one of our authorized distributors