


# HRP Anti-Cdc37 (phospho S13) antibody [EPR4879] ab202364

リコンビナント **RabMAb**

画像数 2

### 製品の概要

製品名	HRP Anti-Cdc37 (phospho S13) antibody [EPR4879]
製品の詳細	HRP Rabbit monoclonal [EPR4879] to Cdc37 (phospho S13)
由来種	Rabbit
標識	HRP
アプリケーション	適用あり: WB
種交差性	交差種: Human 交差が予測される動物種: Mouse, Rat 
免疫原	Synthetic peptide. This information is proprietary to Abcam and/or its suppliers.
ポジティブ・コントロール	WB: HeLa whole cell lysate and HeLa whole cell lysate serum starved and treated with Calyculin A.
特記事項	Our RabMAb <sup>®</sup> technology is a patented hybridoma-based technology for making rabbit monoclonal antibodies. For details on our patents, please refer to <a href="#">RabMAb<sup>®</sup> patents</a> .

### 製品の特性

製品の状態	Liquid
保存方法	Shipped at 4°C. Store at +4°C short term (1-2 weeks). Upon delivery aliquot. Store at -20°C. Stable for 12 months at -20°C. Store In the Dark.
バッファー	pH: 7.40 Preservative: 0.1% Proclin 300 Solution Constituents: 30% Glycerol (glycerin, glycerine), PBS, 1% BSA
精製度	Protein A purified
ポリ/モノ	モノクローナル
クローン名	EPR4879
アイソタイプ	IgG

### アプリケーション

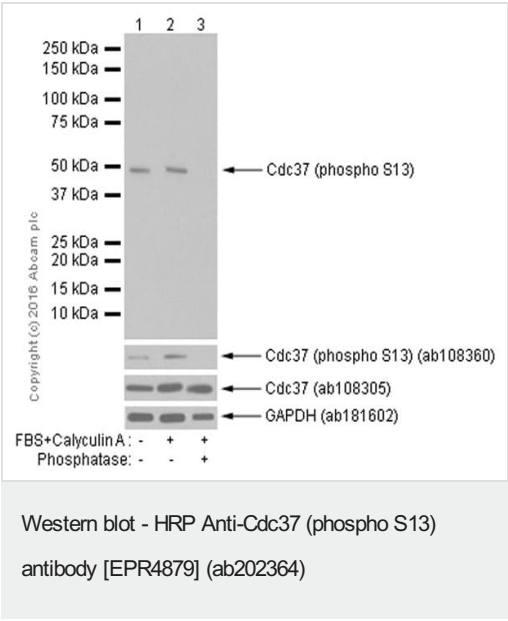
**The Abpromise guarantee**      **Abpromise保証は、** 次のテスト済みアプリケーションにおけるab202364の使用に適用されます  
アプリケーションノートには、推奨の開始希釈率がありますが、適切な希釈率につきましてはご検討ください。

アプリケーション	Abreviews	特記事項
WB		1/5000. Detects a band of approximately 44 kDa (predicted molecular weight: 44 kDa).

ターゲット情報

機能	Co-chaperone that binds to numerous kinases and promotes their interaction with the Hsp90 complex, resulting in stabilization and promotion of their activity.
配列類似性	Belongs to the CDC37 family.
翻訳後修飾	Constitutively sumoylated by UBE2I.
細胞内局在	Cytoplasm.

画像



**All lanes :** HRP Anti-Cdc37 (phospho S13) antibody [EPR4879] (ab202364) at 1/5000 dilution

**Lane 1 :** Untreated HeLa (Human epithelial carcinoma cell line) whole cell lysate

**Lane 2 :** HeLa (Human epithelial carcinoma cell line) whole cell lysate serum starved and Calyculin A treated

**Lane 3 :** HeLa (Human epithelial carcinoma cell line) whole cell lysate, serum starved and Calyculin A treated. The membrane was then incubated with Alkaline phosphatase.

Lysates/proteins at 10 µg per lane.

Developed using the ECL technique.

Performed under reducing conditions.

**Predicted band size:** 44 kDa





**Observed band size:** 44 kDa

**Exposure time:** 3 minutes

This blot was produced using a 4-12% Bis-tris gel under the MOPS

buffer system. The gel was run at 200V for 50 minutes before being transferred onto a Nitrocellulose membrane at 30V for 70 minutes. The membrane was then blocked for an hour using 2% Bovine Serum Albumin before being incubated with **ab202864** overnight at 4°C. Antibody binding was visualised using ECL development solution **ab133406**.

Why choose a recombinant antibody?

 <b>Research with confidence</b> Consistent and reproducible results	 <b>Long-term and scalable supply</b> Recombinant technology
 <b>Success from the first experiment</b> Confirmed specificity	 <b>Ethical standards compliant</b> Animal-free production

HRP Anti-Cdc37 (phospho S13) antibody [EPR4879]  
(ab202364)

**Please note:** All products are "FOR RESEARCH USE ONLY. NOT FOR USE IN DIAGNOSTIC PROCEDURES"

### Our Abpromise to you: Quality guaranteed and expert technical support

- Replacement or refund for products not performing as stated on the datasheet
- Valid for 12 months from date of delivery
- Response to your inquiry within 24 hours
- We provide support in Chinese, English, French, German, Japanese and Spanish
- Extensive multi-media technical resources to help you
- We investigate all quality concerns to ensure our products perform to the highest standards

If the product does not perform as described on this datasheet, we will offer a refund or replacement. For full details of the Abpromise, please visit <https://www.abcam.co.jp/abpromise> or contact our technical team.

### Terms and conditions

- Guarantee only valid for products bought direct from Abcam or one of our authorized distributors