


HRP Anti-CCR3 antibody [Y31] ab200020

リコンビナント **RabMAb**

画像数 2

製品の概要

| | |
|--------------|---|
| 製品名 | HRP Anti-CCR3 antibody [Y31] |
| 製品の詳細 | HRP Rabbit monoclonal [Y31] to CCR3 |
| 由来種 | Rabbit |
| 標識 | HRP |
| アプリケーション | 適用あり: WB |
| 種交差性 | 交差種: Human 交差が予測される動物種: Mouse, Rat, Macaque monkey  |
| 免疫原 | Synthetic peptide. This information is proprietary to Abcam and/or its suppliers. |
| ポジティブ・コントロール | WB: K562 and Daudi whole cell lysates. |
| 特記事項 | Our RabMAb [®] technology is a patented hybridoma-based technology for making rabbit monoclonal antibodies. For details on our patents, please refer to RabMAb[®] patents . |

製品の特性

| | |
|--------|--|
| 製品の状態 | Liquid |
| 保存方法 | Shipped at 4°C. Store at +4°C short term (1-2 weeks). Upon delivery aliquot. Store at -20°C. Avoid freeze / thaw cycle. Store In the Dark. |
| バッファー | pH: 7.40 Preservative: 0.1% Proclin 300 Solution Constituents: PBS, 30% Glycerol (glycerin, glycerine), 1% BSA |
| 精製度 | Protein A purified |
| ポリ/モノ | モノクローナル |
| クローン名 | Y31 |
| アイソタイプ | IgG |

アプリケーション

The Abpromise guarantee

Abpromise保証は、 次のテスト済みアプリケーションにおけるab200020の使用に適用されます

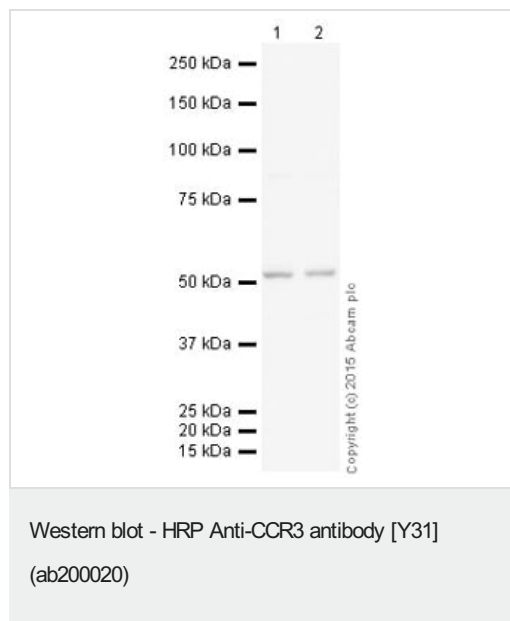
アプリケーションノートには、推奨の開始希釈率がありますが、適切な希釈率につきましてはご確認ください。

| アプリケーション | Abreviews | 特記事項 |
|----------|-----------|--|
| WB | | 1/5000. Detects a band of approximately 51 kDa (predicted molecular weight: 43 kDa). |

ターゲット情報

| | |
|-------|---|
| 機能 | Receptor for a C-C type chemokine. Binds to eotaxin, eotaxin-3, MCP-3, MCP-4, RANTES and MIP-1 delta. Subsequently transduces a signal by increasing the intracellular calcium ions level. Alternative coreceptor with CD4 for HIV-1 infection. |
| 組織特異性 | In eosinophils as well as trace amounts in neutrophils and monocytes. |
| 配列類似性 | Belongs to the G-protein coupled receptor 1 family. |
| 細胞内局在 | Cell membrane. |

画像



All lanes : HRP Anti-CCR3 antibody [Y31] (ab200020) at 1/5000 dilution

Lane 1 : K562 (Human erythromyeloblastoid leukemia cell line) Whole Cell Lysate

Lane 2 : Daudi (Human Burkitt's lymphoma cell line) Whole Cell Lysate

Lysates/proteins at 10 µg per lane.

Developed using the ECL technique.

Performed under reducing conditions.

Predicted band size: 43 kDa





Observed band size: 51 kDa

Exposure time: 1 minute

This blot was produced using a 4-12% Bis-tris gel under the MOPS buffer system. The gel was run at 200V for 50 minutes before being transferred onto a Nitrocellulose membrane at 30V for 70 minutes. The membrane was then blocked for an hour using 2% Bovine Serum Albumin before being incubated with ab200020 overnight at

4°C. Antibody binding was visualised using ECL development solution **ab133406**.

Why choose a recombinant antibody?

| | |
|--|--|
|  <p>Research with confidence Consistent and reproducible results</p> |  <p>Long-term and scalable supply Recombinant technology</p> |
|  <p>Success from the first experiment Confirmed specificity</p> |  <p>Ethical standards compliant Animal-free production</p> |

HRP Anti-CCR3 antibody [Y31] (ab200020)

Please note: All products are "FOR RESEARCH USE ONLY. NOT FOR USE IN DIAGNOSTIC PROCEDURES"

Our Abpromise to you: Quality guaranteed and expert technical support

- Replacement or refund for products not performing as stated on the datasheet
- Valid for 12 months from date of delivery
- Response to your inquiry within 24 hours
- We provide support in Chinese, English, French, German, Japanese and Spanish
- Extensive multi-media technical resources to help you
- We investigate all quality concerns to ensure our products perform to the highest standards

If the product does not perform as described on this datasheet, we will offer a refund or replacement. For full details of the Abpromise, please visit <https://www.abcam.co.jp/abpromise> or contact our technical team.

Terms and conditions

- Guarantee only valid for products bought direct from Abcam or one of our authorized distributors