

HRP Anti-beta III Tubulin antibody [EP1569Y] - Neuronal Marker ab190574

KO 評価済 リコンビナント RabMAb

画像数 4

製品の概要

製品名	HRP Anti-beta III Tubulin antibody [EP1569Y] - Neuronal Marker
製品の詳細	HRP Rabbit monoclonal [EP1569Y] to beta III Tubulin - Neuronal Marker
由来種	Rabbit
標識	HRP
アプリケーション	適用あり: WB
種交差性	交差種: Mouse, Rat, Human
免疫原	Synthetic peptide. This information is proprietary to Abcam and/or its suppliers.
ポジティブ・コントロール	WB: HeLa and PC12 whole cell lysates. Mouse brain, mouse spinal cord, rat brain and rat spinal cord tissue lysates.
特記事項	Our RabMAb [®] technology is a patented hybridoma-based technology for making rabbit monoclonal antibodies. For details on our patents, please refer to RabMAb[®] patents .

製品の特性

製品の状態	Liquid
保存方法	Shipped at 4°C. Store at +4°C short term (1-2 weeks). Upon delivery aliquot. Store at -20°C. Avoid freeze / thaw cycle. Store In the Dark.
バッファー	pH: 7.40 Preservative: 0.1% Proclin 300 Solution Constituents: 30% Glycerol (glycerin, glycerine), 1% BSA, PBS
精製度	Protein A purified
ポリ/モノ	モノクローナル
クローン名	EP1569Y
アイソタイプ	IgG

アプリケーション

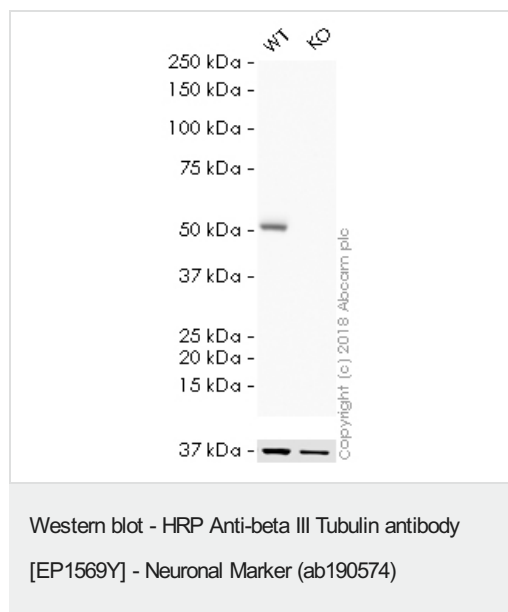
The Abpromise guarantee **Abpromise保証は、**次のテスト済みアプリケーションにおけるab190574の使用に適用されます
 アプリケーションノートには、推奨の開始希釈率がありますが、適切な希釈率につきましてはご検討ください。

アプリケーション	Abreviews	特記事項
WB		1/3000 - 1/10000. Detects a band of approximately 52 kDa (predicted molecular weight: 50 kDa).

ターゲット情報

機能	Tubulin is the major constituent of microtubules. It binds two moles of GTP, one at an exchangeable site on the beta chain and one at a non-exchangeable site on the alpha-chain. TUBB3 plays a critical role in proper axon guidance and maintenance.
組織特異性	Expression is primarily restricted to central and peripheral nervous system.
関連疾患	Defects in TUBB3 are the cause of congenital fibrosis of extraocular muscles type 3A (CFEOM3A) [MIM:600638]. A congenital ocular motility disorder marked by restrictive ophthalmoplegia affecting extraocular muscles innervated by the oculomotor and/or trochlear nerves. It is clinically characterized by anchoring of the eyes in downward gaze, ptosis, and backward tilt of the head. Congenital fibrosis of extraocular muscles type 3 presents as a non-progressive, autosomal dominant disorder with variable expression. Patients may be bilaterally or unilaterally affected, and their oculo-motility defects range from complete ophthalmoplegia (with the eyes fixed in a hypo- and exotropic position), to mild asymptomatic restrictions of ocular movement. Ptosis, refractive error, amblyopia, and compensatory head positions are associated with the more severe forms of the disorder. In some cases the ocular phenotype is accompanied by additional features including developmental delay, corpus callosum agenesis, basal ganglia dysmorphism, facial weakness, polyneuropathy.
配列類似性	Belongs to the tubulin family.
ドメイン	The highly acidic C-terminal region may bind cations such as calcium.
翻訳後修飾	Some glutamate residues at the C-terminus are polyglutamylated. This modification occurs exclusively on glutamate residues and results in polyglutamate chains on the gamma-carboxyl group. Also monoglycylated but not polyglycylated due to the absence of functional TTLL10 in human. Monoglycylation is mainly limited to tubulin incorporated into axonemes (cilia and flagella) whereas glutamylation is prevalent in neuronal cells, centrioles, axonemes, and the mitotic spindle. Both modifications can coexist on the same protein on adjacent residues, and lowering glycylation levels increases polyglutamylation, and reciprocally. The precise function of such modifications is still unclear but they regulate the assembly and dynamics of axonemal microtubules.
細胞内局在	Cytoplasm > cytoskeleton.

画像



Lane 1 : HRP Anti-beta III Tubulin antibody [EP1569Y] - Neuronal Marker (ab190574) at 20 µg

Lane 2 : HRP Anti-beta III Tubulin antibody [EP1569Y] - Neuronal Marker (ab190574) at 1/5000 dilution

Lane 1 : Wild-type HAP1 whole cell lysate

Lane 2 : TUBB3 (beta III Tubulin) knockout HAP1 whole cell lysate

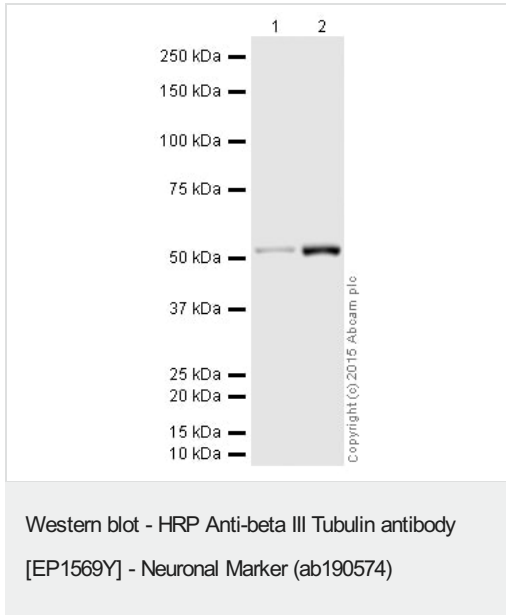
Lysates/proteins at 20 µg per lane.

Predicted band size: 50 kDa

Observed band size: 50 kDa

Exposure time: 2 minutes

ab190574 was shown to specifically react with beta III Tubulin in wild-type HAP1 cells as signal was lost in TUBB3 (beta III Tubulin) knockout cells. Wild-type and TUBB3 (beta III Tubulin) knockout samples were subjected to SDS-PAGE. Ab190574 and [ab184095](#) (Mouse monoclonal [mAbcam 9484] to GAPDH - Loading Control (Alexa Fluor® 680) loading control) were incubated overnight at 4°C at 1/5000 dilution and 1/1000 dilution respectively. The loading control was imaged using the Licor Odyssey CLx prior to blots being developed with ECL technique.



All lanes : HRP Anti-beta III Tubulin antibody [EP1569Y] - Neuronal Marker (ab190574) at 1/3000 dilution

Lane 1 : HeLa whole cell lysate ([ab150035](#))

Lane 2 : PC12 (Rat adrenal pheochromocytoma cell line) Whole Cell Lysate

Lysates/proteins at 20 µg per lane.

Developed using the ECL technique.

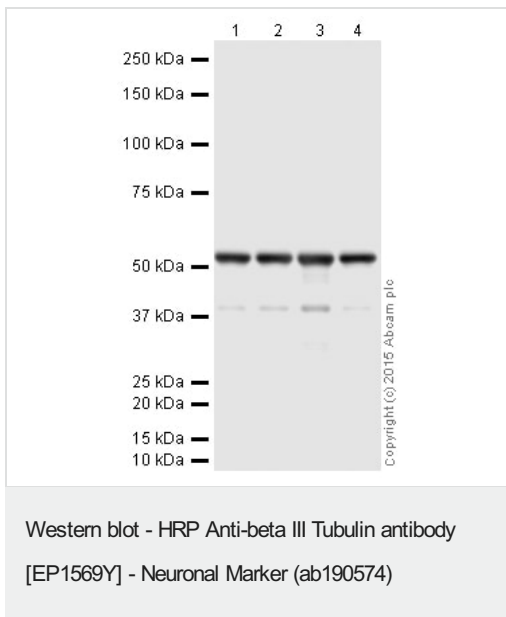
Performed under reducing conditions.

Predicted band size: 50 kDa

Observed band size: 52 kDa

Exposure time: 1 second

This blot was produced using a 4-12% Bis-tris gel under the MOPS buffer system. The gel was run at 200V for 50 minutes before being transferred onto a Nitrocellulose membrane at 30V for 70 minutes. The membrane was then blocked for an hour using 3% milk before being incubated with ab190574 overnight at 4°C. Antibody binding was visualised using ECL development solution [ab133406](#).



All lanes : HRP Anti-beta III Tubulin antibody [EP1569Y] - Neuronal Marker (ab190574) at 1/10000 dilution

Lane 1 : Brain (Mouse) Tissue Lysate

Lane 2 : Spinal Cord (Mouse) Tissue Lysate

Lane 3 : Brain (Rat) Tissue Lysate

Lane 4 : Spinal Cord (Rat) Tissue Lysate

Lysates/proteins at 10 µg per lane.

Developed using the ECL technique.

Performed under reducing conditions.

Predicted band size: 50 kDa

Observed band size: 52 kDa

Exposure time: 1 second

This blot was produced using a 4-12% Bis-tris gel under the MOPS buffer system. The gel was run at 200V for 50 minutes before being transferred onto a Nitrocellulose membrane at 30V for 70 minutes. The membrane was then blocked for an hour using 3% milk before being incubated with ab190574 overnight at 4°C. Antibody binding was visualised using ECL development solution **ab133406**.

Why choose a recombinant antibody?

 <p>Research with confidence Consistent and reproducible results</p>	 <p>Long-term and scalable supply Recombinant technology</p>
 <p>Success from the first experiment Confirmed specificity</p>	 <p>Ethical standards compliant Animal-free production</p>

HRP Anti-beta III Tubulin antibody [EP1569Y] - Neuronal Marker (ab190574)

Please note: All products are "FOR RESEARCH USE ONLY. NOT FOR USE IN DIAGNOSTIC PROCEDURES"

Our Abpromise to you: Quality guaranteed and expert technical support

- Replacement or refund for products not performing as stated on the datasheet
- Valid for 12 months from date of delivery
- Response to your inquiry within 24 hours
- We provide support in Chinese, English, French, German, Japanese and Spanish
- Extensive multi-media technical resources to help you
- We investigate all quality concerns to ensure our products perform to the highest standards

If the product does not perform as described on this datasheet, we will offer a refund or replacement. For full details of the Abpromise, please visit <https://www.abcam.co.jp/abpromise> or contact our technical team.

Terms and conditions

- Guarantee only valid for products bought direct from Abcam or one of our authorized distributors