


# HRP Anti-beta Actin antibody [mAbcam 8226] - Loading Control ab20272

★★★★★ [17 Abreviews](#) [271 References](#) [画像数 3](#)

### 製品の概要

|              |   |
|--------------|---|
| 製品名          | HRP Anti-beta Actin antibody [mAbcam 8226] - Loading Control  |
| 製品の詳細        | HRP Mouse monoclonal [mAbcam 8226] to beta Actin - Loading Control  |
| 由来種          | Mouse   |
| 標識           | HRP   |
| アプリケーション     | <b>適用あり:</b> WB   |
| 種交差性         | <b>交差種:</b> Mouse, Rat, Human<br><b>交差が予測される動物種:</b> Sheep, Rabbit, Horse, Chicken, Guinea pig, Cow, Dog, Pig, Drosophila melanogaster, Monkey, African green monkey, Chinese hamster    |
| 免疫原          | Synthetic peptide. This information is proprietary to Abcam and/or its suppliers.<br>(Peptide available as <a href="#">ab13772</a> )  |
| ポジティブ・コントロール | HeLa whole cell lysate, 3T3 whole cell lysate, Rat brain lysate   |
| 特記事項         | <p>The Life Science industry has been in the grips of a reproducibility crisis for a number of years. Abcam is leading the way in addressing this with our range of recombinant monoclonal antibodies and knockout edited cell lines for gold-standard validation. Please check that this product meets your needs before purchasing.</p> <p>If you have any questions, special requirements or concerns, please send us an inquiry and/or contact our Support team ahead of purchase. Recommended alternatives for this product can be found below, along with publications, customer reviews and Q&amp;As</p> |

### 製品の特性

|       |  |
|-------|--|
| 製品の状態 | Liquid   |
| 保存方法  | Shipped at 4°C. Store at +4°C short term (1-2 weeks). Upon delivery aliquot. Store at -20°C. Avoid freeze / thaw cycle. Store In the Dark. |
| バッファー | pH: 7.40<br>Preservative: 0.1% Proclin 300 Solution<br>Constituents: PBS, 1% BSA, 30% Glycerol (glycerin, glycerine)                       |
| 精製度   | IgG fraction   |
| ポリ/モノ | モノクローナル  |

|        |             |
|--------|-------------|
| クローン名  | mAbcam 8226 |
| ミエローマ  | Sp2/0-Ag14  |
| アイソタイプ | IgG1        |
| 軽鎖の種類  | kappa       |

## アプリケーション

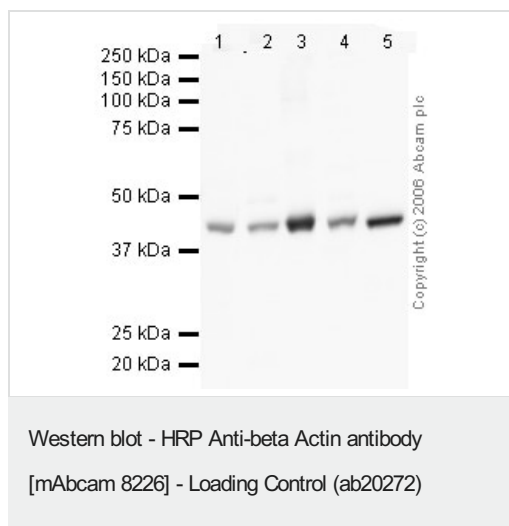
**The Abpromise guarantee**      **Abpromise保証は、次のテスト済みアプリケーションにおけるab20272の使用に適用されます**  
 アプリケーションノートには、推奨の開始希釈率がありますが、適切な希釈率につきましてはご確認ください。

| アプリケーション | Abreviews  | 特記事項   |
|----------|------------|--|
| WB       | ★★★★★ (17) | 1/5000. Detects a band of approximately 42 kDa (predicted molecular weight: 42 kDa). Can be blocked with <b>Human beta Actin peptide (ab13772)</b> . Abcam strongly recommends blocking and incubation using 5% BSA as we have found that use of 5% milk seems to drastically reduce the intensity of the signal obtained. Please refer to WB image for further details. |

## ターゲット情報

|       |   |
|-------|---|
| 機能    | Actins are highly conserved proteins that are involved in various types of cell motility and are ubiquitously expressed in all eukaryotic cells.  |
| 関連疾患  | Defects in ACTB are a cause of dystonia juvenile-onset (DYTJ) [MIM:607371]. DYTJ is a form of dystonia with juvenile onset. Dystonia is defined by the presence of sustained involuntary muscle contraction, often leading to abnormal postures. DYTJ patients manifest progressive, generalized, dopa-unresponsive dystonia, developmental malformations and sensory hearing loss. |
| 配列類似性 | Belongs to the actin family.  |
| 翻訳後修飾 | ISGylated.  |
| 細胞内局在 | Cytoplasm > cytoskeleton. Localized in cytoplasmic mRNP granules containing untranslated mRNAs.   |

## 画像



**All lanes :** HRP Anti-beta Actin antibody [mAbcam 8226] - Loading Control (ab20272) at 1/5000 dilution

**Lane 1 :** human testis lysate

**Lane 2 :** human brain lysate

**Lane 3 :** human tonsil lysate

**Lane 4 :** mouse brain lysate

**Lane 5 :** mouse spleen lysate

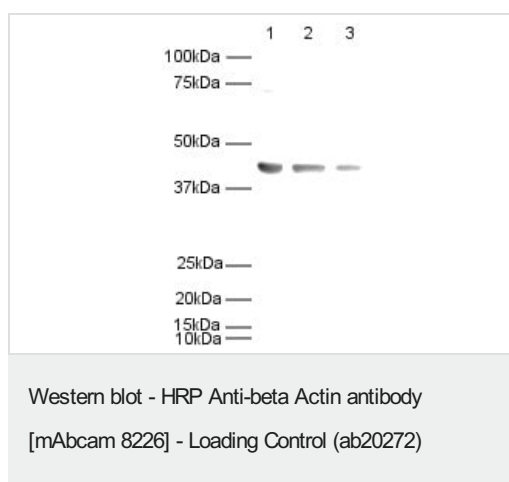
Lysates/proteins at 20 µg per lane.

Developed using the ECL technique.

Performed under reducing conditions.

**Predicted band size:** 42 kDa

**Exposure time:** 2 minutes



**All lanes :** HRP Anti-beta Actin antibody [mAbcam 8226] - Loading Control (ab20272) at 1/5000 dilution

**Lane 1 :** HeLa whole cell lysate

**Lane 2 :** 3T3 whole cell lysate

**Lane 3 :** Rat brain lysate

Lysates/proteins at 20 µg per lane.

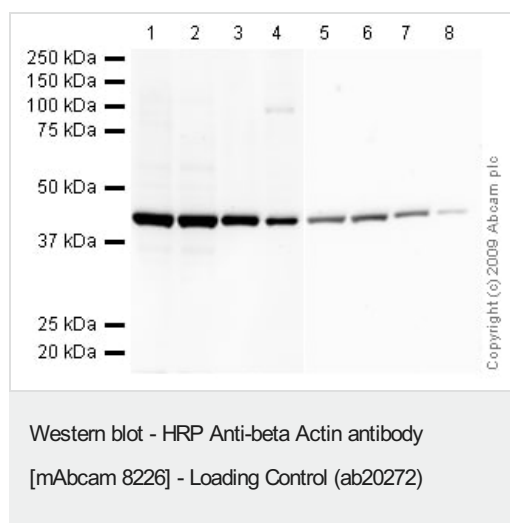
Developed using the ECL technique.

Performed under reducing conditions.

**Predicted band size:** 42 kDa

**Observed band size:** 42 kDa

**Exposure time:** 30 seconds



**Lanes 1-4 :** HRP Anti-beta Actin antibody [mAbcam 8226] - Loading Control (ab20272) at 1/5000 dilution (Blocked in 5% BSA)

**Lanes 5-8 :** HRP Anti-beta Actin antibody [mAbcam 8226] - Loading Control (ab20272) at 1/5000 dilution (Blocked in 5% MILK)

**Lanes 1 & 5 :** HeLa (Human epithelial carcinoma cell line) Whole Cell Lysate

**Lanes 2 & 6 :** Jurkat (Human T cell lymphoblast-like cell line) Whole Cell Lysate

**Lanes 3 & 7 :** NIH/3T3 whole cell lysate ([ab7179](#))

**Lanes 4 & 8 :** PC12 (Rat adrenal pheochromocytoma cell line) Whole Cell Lysate

Lysates/proteins at 10 µg per lane.

Developed using the ECL technique.

Performed under reducing conditions.

**Predicted band size:** 42 kDa

**Observed band size:** 42 kDa

**Exposure time:** 1 minute

The membrane 1-4 was blocked in 5% BSA (1 hour). The membrane 5-8 was blocked in 5% MILK (1 hour). Abcam routinely uses 5% BSA to block, however following recent customer feedback our labs investigated the effect of 5% milk blocking. We can now confirm that milk is not a suitable blocking agent for this antibody and significantly decreases the signal on the membrane.

**Please note:** All products are "FOR RESEARCH USE ONLY. NOT FOR USE IN DIAGNOSTIC PROCEDURES"

#### Our Abpromise to you: Quality guaranteed and expert technical support

- Replacement or refund for products not performing as stated on the datasheet

- Valid for 12 months from date of delivery
- Response to your inquiry within 24 hours
- We provide support in Chinese, English, French, German, Japanese and Spanish
- Extensive multi-media technical resources to help you
- We investigate all quality concerns to ensure our products perform to the highest standards

If the product does not perform as described on this datasheet, we will offer a refund or replacement. For full details of the Abpromise, please visit <https://www.abcam.co.jp/abpromise> or contact our technical team.

#### **Terms and conditions**

---

- Guarantee only valid for products bought direct from Abcam or one of our authorized distributors