


HRP Anti-ATPB antibody [3D5] - Mitochondrial Marker ab197905

画像数 1

製品の概要

製品名	HRP Anti-ATPB antibody [3D5] - Mitochondrial Marker
製品の詳細	HRP Mouse monoclonal [3D5] to ATPB - Mitochondrial Marker
由来種	Mouse
標識	HRP
アプリケーション	適用あり: WB
種交差性	交差種: Human 交差が予測される動物種: Mouse, Rat, Cow, Caenorhabditis elegans, Monkey 
免疫原	The details of the immunogen for this antibody are not available.
ポジティブ・コントロール	WB: Human heart mitochondrial lysate. HeLa and HepG2 whole cell lysates.
特記事項	<p>The Life Science industry has been in the grips of a reproducibility crisis for a number of years. Abcam is leading the way in addressing this with our range of recombinant monoclonal antibodies and knockout edited cell lines for gold-standard validation. Please check that this product meets your needs before purchasing.</p> <p>If you have any questions, special requirements or concerns, please send us an inquiry and/or contact our Support team ahead of purchase. Recommended alternatives for this product can be found below, along with publications, customer reviews and Q&As</p>

製品の特性

製品の状態	Liquid
保存方法	Shipped at 4°C. Store at +4°C short term (1-2 weeks). Upon delivery aliquot. Store at -20°C or -80°C. Avoid freeze / thaw cycle. Store In the Dark.
バッファー	pH: 7.40 Preservative: 0.1% Proclin 300 Solution Constituents: 30% Glycerol (glycerin, glycerine), 1% BSA, PBS
精製度	Affinity purified
特記事項 (精製)	Near homogeneity as judged by SDS-PAGE. The antibody was produced in vitro using hybridomas grown in serum-free medium, and then purified by biochemical fractionation.
ポリ/モノ	モノクローナル
クローン名	3D5

アイソタイプ IgG1

軽鎖の種類 kappa

アプリケーション

The Abpromise guarantee **Abpromise保証は、** 次のテスト済みアプリケーションにおけるab197905の使用に適用されます
アプリケーションノートには、推奨の開始希釈率がありますが、適切な希釈率につきましてはご確認ください。

アプリケーション	Abreviews	特記事項
WB		1/5000. Detects a band of approximately 52 kDa (predicted molecular weight: 52 kDa).

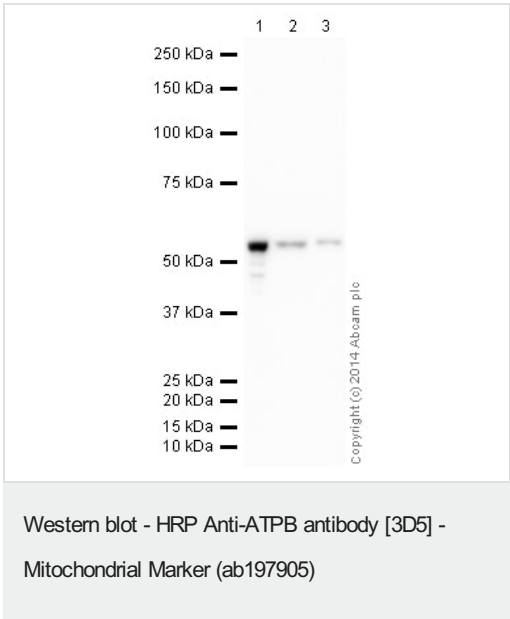
ターゲット情報

機能 Mitochondrial membrane ATP synthase (F(1)F(0) ATP synthase or Complex V) produces ATP from ADP in the presence of a proton gradient across the membrane which is generated by electron transport complexes of the respiratory chain. F-type ATPases consist of two structural domains, F(1) - containing the extramembraneous catalytic core, and F(0) - containing the membrane proton channel, linked together by a central stalk and a peripheral stalk. During catalysis, ATP synthesis in the catalytic domain of F(1) is coupled via a rotary mechanism of the central stalk subunits to proton translocation. Subunits alpha and beta form the catalytic core in F(1). Rotation of the central stalk against the surrounding alpha(3)beta(3) subunits leads to hydrolysis of ATP in three separate catalytic sites on the beta subunits.

配列類似性 Belongs to the ATPase alpha/beta chains family.

細胞内局在 Mitochondrion. Mitochondrion inner membrane. Peripheral membrane protein.

画像



All lanes : HRP Anti-ATPB antibody [3D5] - Mitochondrial Marker (ab197905) at 1/5000 dilution

Lane 1 : Human heart tissue lysate - mitochondrial extract (**ab110337**) at 5 µg

Lane 2 : HeLa whole cell lysate (**ab150035**) at 10 µg

Lane 3 : HepG2 (Human hepatocellular liver carcinoma cell line) Whole Cell Lysate at 10 µg

Developed using the ECL technique.

Performed under reducing conditions.

Predicted band size: 52 kDa

Observed band size: 52 kDa

Exposure time: 2 seconds

This blot was produced using a 4-12% Bis-tris gel under the MOPS buffer system. The gel was run at 200V for 50 minutes before being transferred onto a Nitrocellulose membrane at 30V for 70 minutes. The membrane was then blocked for an hour using 2% Bovine Serum Albumin before being incubated with ab197905 overnight at 4°C. Antibody binding was visualised using ECL development solution **ab133406**.

Please note: All products are "FOR RESEARCH USE ONLY. NOT FOR USE IN DIAGNOSTIC PROCEDURES"

Our Abpromise to you: Quality guaranteed and expert technical support

- Replacement or refund for products not performing as stated on the datasheet
- Valid for 12 months from date of delivery
- Response to your inquiry within 24 hours
- We provide support in Chinese, English, French, German, Japanese and Spanish
- Extensive multi-media technical resources to help you
- We investigate all quality concerns to ensure our products perform to the highest standards

If the product does not perform as described on this datasheet, we will offer a refund or replacement. For full details of the Abpromise, please visit <https://www.abcam.co.jp/abpromise> or contact our technical team.

Terms and conditions

- Guarantee only valid for products bought direct from Abcam or one of our authorized distributors