


HRP Anti-alpha Tubulin antibody [DM1A] - Loading Control ab40742

★★★★★ [5 Abreviews](#) [63 References](#) [画像数 2](#)

製品の概要

製品名	HRP Anti-alpha Tubulin antibody [DM1A] - Loading Control
製品の詳細	HRP Mouse monoclonal [DM1A] to alpha Tubulin - Loading Control
由来種	Mouse
標識	HRP
アプリケーション	適用あり: WB, IHC-P
種交差性	交差種: Mouse, Rat, Human, Xenopus laevis 交差が予測される動物種: Guinea pig 
免疫原	Full length native protein (purified) corresponding to Chicken alpha Tubulin.
ポジティブ・コントロール	This antibody gave a positive signal in the following: HeLa (Human epithelial carcinoma cell line) Whole Cell Lysate NIH 3T3 (Mouse embryonic fibroblast cell line) Whole Cell Lysate Brain (Rat) Tissue Lysate - normal tissue Xenopus (Blastula) Whole Cell Lysate. IHC-P: FFPE human colon (normal) tissue sections.
特記事項	<p>The Life Science industry has been in the grips of a reproducibility crisis for a number of years. Abcam is leading the way in addressing this with our range of recombinant monoclonal antibodies and knockout edited cell lines for gold-standard validation. Please check that this product meets your needs before purchasing.</p> <p>If you have any questions, special requirements or concerns, please send us an inquiry and/or contact our Support team ahead of purchase. Recommended alternatives for this product can be found below, along with publications, customer reviews and Q&As</p>

製品の特性

製品の状態	Liquid
保存方法	Shipped at 4°C. Store at +4°C short term (1-2 weeks). Upon delivery aliquot. Store at -20°C. Avoid freeze / thaw cycle. Store In the Dark.
バッファー	Preservative: 0.1% 10% Proclin 300 Solution Constituents: 1% BSA, 30% Glycerol (glycerin, glycerine), PBS
精製度	IgG fraction
ポリ/モノ	モノクローナル

クローン名 DM1A
アイソタイプ IgG

アプリケーション

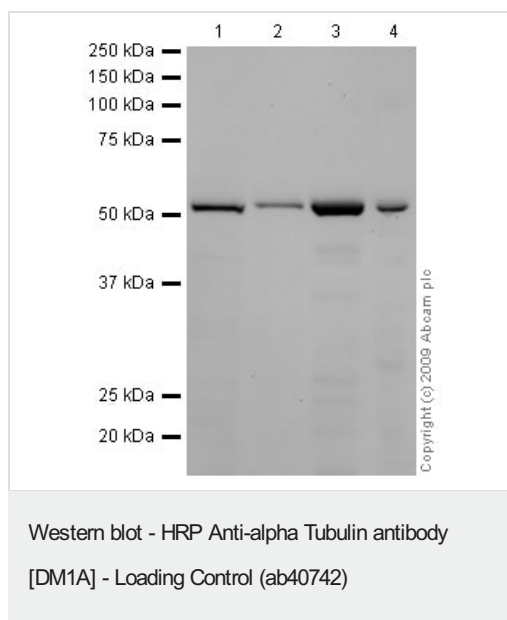
The Abpromise guarantee Abpromise保証は、 次のテスト済みアプリケーションにおけるab40742の使用に適用されます
アプリケーションノートには、推奨の開始希釈率がありますが、適切な希釈率につきましてはご検討ください。

アプリケーション	Abreviews	特記事項
WB	★★★★★ (5)	1/5000. Detects a band of approximately 57 kDa (predicted molecular weight: 50 kDa).
IHC-P		1/100. Perform heat mediated antigen retrieval with citrate buffer pH 6 before commencing with IHC staining protocol.

ターゲット情報

機能	Tubulin is the major constituent of microtubules. It binds two moles of GTP, one at an exchangeable site on the beta chain and one at a non-exchangeable site on the alpha chain.
配列類似性	Belongs to the tubulin family.
翻訳後修飾	<p>Some glutamate residues at the C-terminus are polyglutamylated. This modification occurs exclusively on glutamate residues and results in polyglutamate chains on the gamma-carboxyl group. Also monoglycylated but not polyglycylated due to the absence of functional TTL10 in human. Monoglycylation is mainly limited to tubulin incorporated into axonemes (cilia and flagella) whereas glutamylation is prevalent in neuronal cells, centrioles, axonemes, and the mitotic spindle. Both modifications can coexist on the same protein on adjacent residues, and lowering glycylation levels increases polyglutamylated, and reciprocally. The precise function of such modifications is still unclear but they regulate the assembly and dynamics of axonemal microtubules.</p> <p>Acetylation of alpha chains at Lys-40 stabilizes microtubules and affects affinity and processivity of microtubule motors. This modification has a role in multiple cellular functions, ranging from cell motility, cell cycle progression or cell differentiation to intracellular trafficking and signaling.</p>
細胞内局在	Cytoplasm > cytoskeleton.

画像



All lanes : HRP Anti-alpha Tubulin antibody [DM1A] - Loading Control (ab40742) at 1/5000 dilution

Lane 1 : HeLa (Human epithelial carcinoma cell line) Whole Cell Lysate

Lane 2 : NIH/3T3 whole cell lysate ([ab7179](#))

Lane 3 : Brain (Rat) Tissue Lysate

Lane 4 : Xenopus Laevis Protein Extracts (Stg 8)

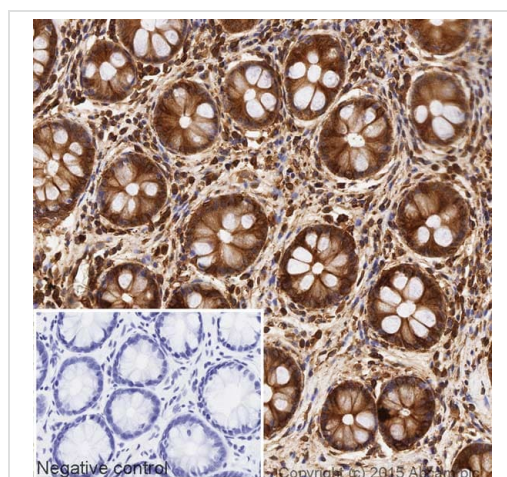
Lysates/proteins at 10 µg per lane.

Performed under reducing conditions.

Predicted band size: 50 kDa

Observed band size: 57 kDa

Exposure time: 2 minutes



Immunohistochemistry (Formalin/PFA-fixed paraffin-embedded sections) - HRP Anti-alpha Tubulin antibody [DM1A] - Loading Control (ab40742)

IHC image of alpha Tubulin staining in a section of formalin-fixed paraffin-embedded normal human colon tissue*, performed on a Leica BOND™. The section was pre-treated using heat mediated antigen retrieval with sodium citrate buffer (pH6, epitope retrieval solution 1) for 20mins. The section was then incubated with ab40742, 1/100 dilution, for 15 mins at room temperature. DAB was used as the chromogen. The section was then counterstained with haematoxylin and mounted with DPX. The inset negative control image is taken from an identical assay without primary antibody.

For other IHC staining systems (automated and non-automated) customers should optimize variable parameters such as antigen retrieval conditions, primary antibody concentration and antibody incubation times.

*Tissue obtained from the Human Research Tissue Bank, supported by the NIHR Cambridge Biomedical Research Centre

Please note: All products are "FOR RESEARCH USE ONLY. NOT FOR USE IN DIAGNOSTIC PROCEDURES"

Our Abpromise to you: Quality guaranteed and expert technical support

- Replacement or refund for products not performing as stated on the datasheet
- Valid for 12 months from date of delivery
- Response to your inquiry within 24 hours
- We provide support in Chinese, English, French, German, Japanese and Spanish
- Extensive multi-media technical resources to help you
- We investigate all quality concerns to ensure our products perform to the highest standards

If the product does not perform as described on this datasheet, we will offer a refund or replacement. For full details of the Abpromise, please visit <https://www.abcam.co.jp/abpromise> or contact our technical team.

Terms and conditions

- Guarantee only valid for products bought direct from Abcam or one of our authorized distributors