

Anti-HRH1/H1R antibody ab75236

1 [References](#) **2** [画像数](#)

製品の概要

製品名	Anti-HRH1/H1R antibody
製品の詳細	Rabbit polyclonal to HRH1/H1R
由来種	Rabbit
アプリケーション	適用あり: WB, ICC/IF
種交差性	交差種: Human
免疫原	Synthetic peptide. This information is proprietary to Abcam and/or its suppliers.
ポジティブ・コントロール	COLO205 cell extracts. LOVO cells.
特記事項	<p>The Life Science industry has been in the grips of a reproducibility crisis for a number of years. Abcam is leading the way in addressing this with our range of recombinant monoclonal antibodies and knockout edited cell lines for gold-standard validation. Please check that this product meets your needs before purchasing.</p> <p>If you have any questions, special requirements or concerns, please send us an inquiry and/or contact our Support team ahead of purchase. Recommended alternatives for this product can be found below, along with publications, customer reviews and Q&As</p>

製品の特性

製品の状態	Liquid
保存方法	Shipped at 4°C. Store at -20°C. Stable for 12 months at -20°C.
バッファー	<p>pH: 7.40</p> <p>Preservative: 0.02% Sodium azide</p> <p>Constituents: 50% Glycerol (glycerin, glycerine), 0.87% Sodium chloride, PBS</p> <p>Without Mg²⁺ and Ca²⁺</p>
精製度	Immunogen affinity purified
ポリ/モノ	ポリクローナル
アイソタイプ	IgG

アプリケーション

The Abpromise guarantee

Abpromise保証は、次のテスト済みアプリケーションにおけるab75236の使用に適用されます

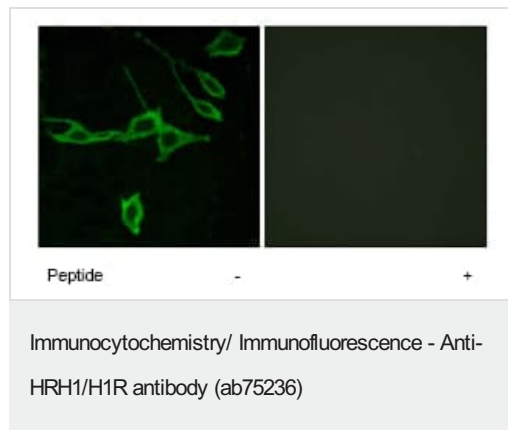
アプリケーションノートには、推奨の開始希釈率がありますが、適切な希釈率につきましてはご検討ください。

アプリケーション	Abreviews	特記事項
WB		1/500 - 1/1000. Detects a band of approximately 56 kDa (predicted molecular weight: 56 kDa).
ICC/IF		1/500 - 1/1000.

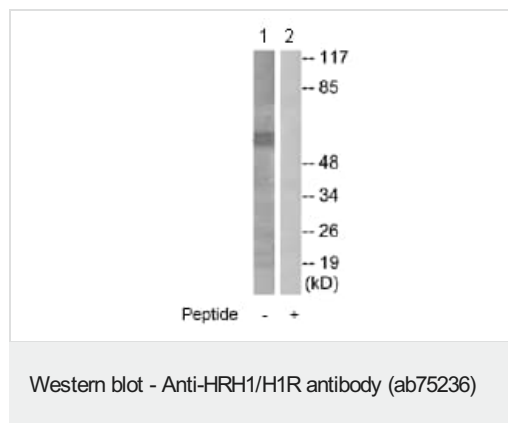
ターゲット情報

機能	In peripheral tissues, the H1 subclass of histamine receptors mediates the contraction of smooth muscles, increase in capillary permeability due to contraction of terminal venules, and catecholamine release from adrenal medulla, as well as mediating neurotransmission in the central nervous system.
配列類似性	Belongs to the G-protein coupled receptor 1 family.
翻訳後修飾	Potential sites of phosphorylation in the third cytoplasmic loop may play an important role in regulating signal transduction through the receptor molecule.
細胞内局在	Cell membrane.

画像



ab75236 at 1/500 dilution staining HRH1/H1R in LOVO cells by Immunofluorescence, in the absence or presence of the immunising peptide.



All lanes : Anti-HRH1/H1R antibody (ab75236) at 1/500 dilution

Lane 1 : COLO205 cell extracts

Lane 2 : COLO205 cell extracts with immunising peptide at 10 µg

Lysates/proteins at 30 µg per lane.

Predicted band size: 56 kDa

Observed band size: 56 kDa

Please note: All products are "FOR RESEARCH USE ONLY. NOT FOR USE IN DIAGNOSTIC PROCEDURES"

Our Abpromise to you: Quality guaranteed and expert technical support

- Replacement or refund for products not performing as stated on the datasheet
- Valid for 12 months from date of delivery
- Response to your inquiry within 24 hours

- We provide support in Chinese, English, French, German, Japanese and Spanish
- Extensive multi-media technical resources to help you
- We investigate all quality concerns to ensure our products perform to the highest standards

If the product does not perform as described on this datasheet, we will offer a refund or replacement. For full details of the Abpromise, please visit <https://www.abcam.co.jp/abpromise> or contact our technical team.

Terms and conditions

- Guarantee only valid for products bought direct from Abcam or one of our authorized distributors