

Anti-HRASLS3 antibody ab88447

画像数 2

製品の概要

製品名	Anti-HRASLS3 antibody
製品の詳細	Mouse polyclonal to HRASLS3
由来種	Mouse
アプリケーション	適用あり: WB
種交差性	交差種: Human
免疫原	Recombinant full length protein within Human HRASLS3 aa 1-200. The exact immunogen sequence used to generate this antibody is proprietary information. If additional detail on the immunogen is needed to determine the suitability of the antibody for your needs, please <u>contact</u> our Scientific Support team to discuss your requirements.
ポジティブ・コントロール	Human placenta tissue lysate Transfected 293T cell lysate
特記事項	<p>The Life Science industry has been in the grips of a reproducibility crisis for a number of years. Abcam is leading the way in addressing this with our range of recombinant monoclonal antibodies and knockout edited cell lines for gold-standard validation. Please check that this product meets your needs before purchasing.</p> <p>If you have any questions, special requirements or concerns, please send us an inquiry and/or contact our Support team ahead of purchase. Recommended alternatives for this product can be found below, along with publications, customer reviews and Q&As</p>

製品の特性

製品の状態	Liquid
保存方法	Shipped at 4°C. Upon delivery aliquot. Store at -20°C or -80°C. Avoid freeze / thaw cycle.
バッファー	pH: 7.40 Constituent: 100% PBS
精製度	Protein A purified
ポリ/モノ	ポリクローナル
アイソタイプ	IgG

アプリケーション

The Abpromise guarantee

Abpromise保証は、次のテスト済みアプリケーションにおけるab88447の使用に適用されます

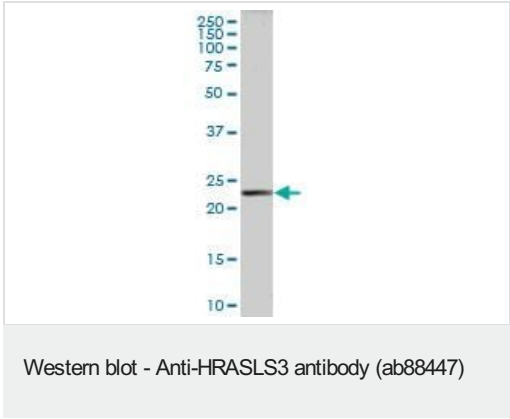
アプリケーションノートには、推奨の開始希釈率がありますが、適切な希釈率につきましてはご検討ください。

アプリケーション	Abreviews	特記事項
WB		Use a concentration of 1 µg/ml. Detects a band of approximately 18 kDa (predicted molecular weight: 18 kDa).

ターゲット情報

機能	Exhibits PLA1/2 activity, catalyzing the calcium-independent hydrolysis of acyl groups in various phosphatidylcholines (PC) and phosphatidylethanolamine (PE). For most substrates, PLA1 activity is much higher than PLA2 activity. Specifically catalyzes the release of fatty acids from phospholipids in adipose tissue (By similarity). N- and O-acylation activity is hardly detectable. Might decrease protein phosphatase 2A (PP2A) activity.
組織特異性	Widely expressed. low expression, if any, in hematopoietic cells and thymus. In testis, confined to round spermatids. Expressed in normal ovarian epithelial cells. Down-regulated in some ovarian carcinomas and testicular germ cell tumors.
配列類似性	Belongs to the H-rev107 family.
細胞内局在	Cytoplasm. Cytoplasm > perinuclear region. Membrane.

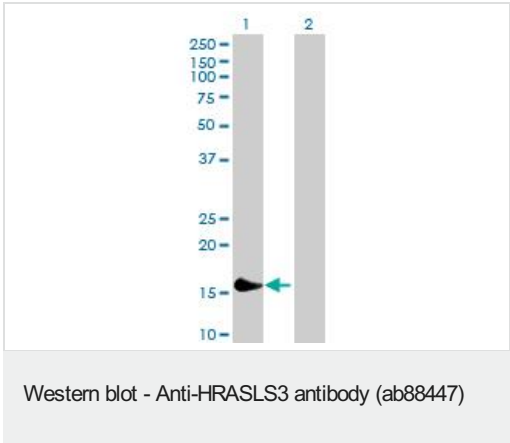
画像



Anti-HRASLS3 antibody (ab88447) at 1 µg/ml + Human placenta tissue lysate at 50 µg

Secondary
Goat Anti-Mouse IgG at 1/2500 dilution

Predicted band size: 18 kDa
Observed band size: 22 kDa



All lanes : Anti-HRASLS3 antibody (ab88447) at 1 µg/ml

Lane 1 : Transfected 293T cell lysate
Lane 2 : Non-transfected 293T cell lysate

Lysates/proteins at 50 µg per lane.

Secondary
All lanes : Goat Anti-Mouse IgG at 1/2500 dilution

Predicted band size: 18 kDa

Observed band size: 18 kDa

Please note: All products are "FOR RESEARCH USE ONLY. NOT FOR USE IN DIAGNOSTIC PROCEDURES"

Our Abpromise to you: Quality guaranteed and expert technical support

- Replacement or refund for products not performing as stated on the datasheet
- Valid for 12 months from date of delivery
- Response to your inquiry within 24 hours
- We provide support in Chinese, English, French, German, Japanese and Spanish
- Extensive multi-media technical resources to help you
- We investigate all quality concerns to ensure our products perform to the highest standards

If the product does not perform as described on this datasheet, we will offer a refund or replacement. For full details of the Abpromise, please visit <https://www.abcam.co.jp/abpromise> or contact our technical team.

Terms and conditions

- Guarantee only valid for products bought direct from Abcam or one of our authorized distributors