

### Anti-HP1 gamma/CBX3 antibody ab10480

KO 評価済

★★★★★ 9 Abreviews 24 References 画像数 3

#### 製品の概要

製品名	Anti-HP1 gamma/CBX3 antibody
製品の詳細	Rabbit polyclonal to HP1 gamma/CBX3
由来種	Rabbit
アプリケーション	適用あり: WB
種交差性	交差種: Mouse, Human
免疫原	Synthetic peptide. This information is proprietary to Abcam and/or its suppliers.
ポジティブ・コントロール	This antibody gave a positive signal in the following whole cell lysates: HeLa; MCF7; HEK293.
特記事項	<p>The Life Science industry has been in the grips of a reproducibility crisis for a number of years. Abcam is leading the way in addressing this with our range of recombinant monoclonal antibodies and knockout edited cell lines for gold-standard validation. Please check that this product meets your needs before purchasing.</p> <p>If you have any questions, special requirements or concerns, please send us an inquiry and/or contact our Support team ahead of purchase. Recommended alternatives for this product can be found below, along with publications, customer reviews and Q&amp;As</p>

#### 製品の特性

製品の状態	Liquid
保存方法	Shipped at 4°C. Store at +4°C short term (1-2 weeks). Upon delivery aliquot. Store at -20°C or -80°C. Avoid freeze / thaw cycle.
バッファー	<p>pH: 7.40</p> <p>Preservative: 0.02% Sodium azide</p> <p>Constituent: PBS</p> <p>Batches of this product that have a concentration &lt; 1mg/ml may have BSA added as a stabilising agent. If you would like information about the formulation of a specific lot, please contact our scientific support team who will be happy to help.</p>
精製度	Immunogen affinity purified
ポリ/モノ	ポリクローナル

## アプリケーション

### The Abpromise guarantee

**Abpromise保証は、**次のテスト済みアプリケーションにおけるab10480の使用に適用されます

アプリケーションノートには、推奨の開始希釈率がありますが、適切な希釈率につきましてはご検討ください。

アプリケーション	Abreviews	特記事項
WB	★★★★★ (2)	1/500 - 1/1000. Detects a band of approximately 24 kDa (predicted molecular weight: 21 kDa).

## ターゲット情報

### 機能

Seems to be involved in transcriptional silencing in heterochromatin-like complexes. Recognizes and binds histone H3 tails methylated at 'Lys-9', leading to epigenetic repression. May contribute to the association of the heterochromatin with the inner nuclear membrane through its interaction with lamin B receptor (LBR). Involved in the formation of functional kinetochore through interaction with MIS12 complex proteins.

### 配列類似性

Contains 2 chromo domains.

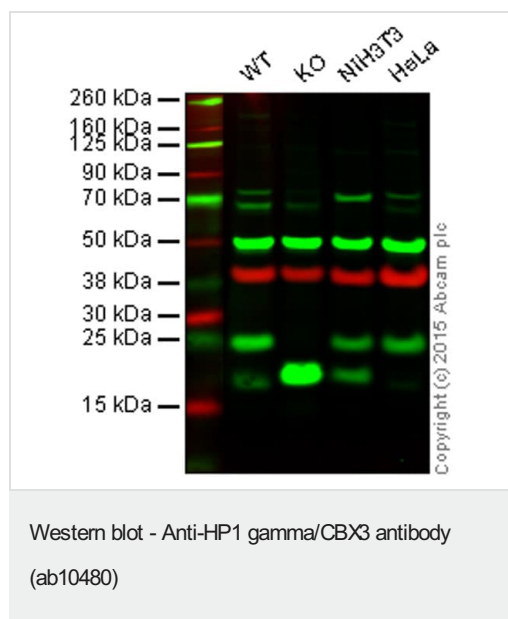
### 翻訳後修飾

Phosphorylated by PIM1. Phosphorylated during interphase and possibly hyper-phosphorylated during mitosis.

### 細胞内局在

Nucleus. Associates with euchromatin and is largely excluded from constitutive heterochromatin. May be associated with microtubules and mitotic poles during mitosis.

## 画像



**Lane 1:** Wild-type HAP1 cell lysate (20 µg)

**Lane 2:** HP1 gamma/CBX3 knockout HAP1 cell lysate (20 µg)

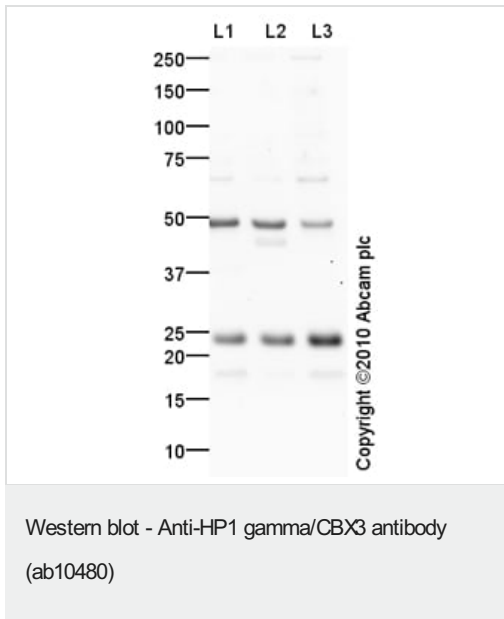
**Lane 3:** NIH/3T3 cell lysate (20 µg)

**Lane 4:** HeLa cell lysate (20 µg)

**Lanes 1 - 4:** Merged signal (red and green). Green - ab10480 observed at 24 kDa. Red - loading control, **ab8245**, observed at 37 kDa.

ab10480 was shown to recognize HP1 gamma/CBX3 when HP1 gamma/CBX3 knockout samples were used, along with additional cross-reactive bands. Wild-type and HP1 gamma/CBX3 knockout samples were subjected to SDS-PAGE. ab10480 and **ab8245** (loading control to GAPDH) were both diluted 1/1000 and incubated overnight at 4°C. Blots were developed with Goat anti-Rabbit IgG H&L (IRDye® 800CW) preadsorbed (**ab216773**) and Goat anti-Mouse IgG H&L (IRDye® 680RD) preadsorbed (**ab216776**)

secondary antibodies at 1/10000 dilution for 1 h at room temperature before imaging.



**All lanes :** Anti-HP1 gamma/CBX3 antibody (ab10480) at 1 µg/ml

**Lane 1 :** HeLa (Human epithelial carcinoma cell line) Whole Cell Lysate

**Lane 2 :** MCF7 (Human breast adenocarcinoma cell line) Whole Cell Lysate

**Lane 3 :** HEK293 (Human embryonic kidney cell line) Whole Cell Lysate

Lysates/proteins at 10 µg per lane.

### Secondary

**All lanes :** Goat Anti-Rabbit IgG H&L (HRP) preadsorbed ([ab97080](#)) at 1/5000 dilution

Developed using the ECL technique.

Performed under reducing conditions.

**Predicted band size:** 21 kDa

**Observed band size:** 24 kDa

**Additional bands at:** 49 kDa. We are unsure as to the identity of these extra bands.

**Exposure time:** 12 minutes

Anti-HP1 gamma/CBX3 antibody (ab10480) at 1/500 dilution + Recombinant Human HP1 gamma protein ([ab88011](#)) at 0.01 µg

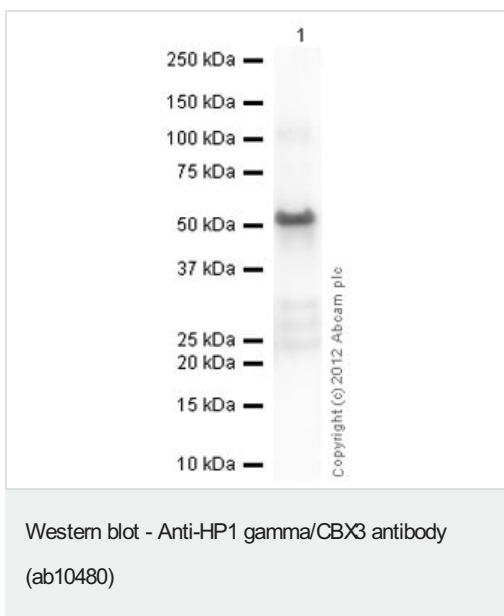
### Secondary

Goat Anti-Rabbit IgG H&L (HRP) preadsorbed ([ab97080](#)) at 1/5000 dilution

Developed using the ECL technique.

Performed under reducing conditions.

**Predicted band size:** 21 kDa



**Exposure time:** 30 seconds

Ab10480 recognizes the tagged recombinant HP1 gamma/CBX3 protein (**ab88011**) which has an expected molecular weight of ~50 kDa.

**Please note:** All products are "FOR RESEARCH USE ONLY. NOT FOR USE IN DIAGNOSTIC PROCEDURES"

### **Our Abpromise to you: Quality guaranteed and expert technical support**

---

- Replacement or refund for products not performing as stated on the datasheet
- Valid for 12 months from date of delivery
- Response to your inquiry within 24 hours
- We provide support in Chinese, English, French, German, Japanese and Spanish
- Extensive multi-media technical resources to help you
- We investigate all quality concerns to ensure our products perform to the highest standards

If the product does not perform as described on this datasheet, we will offer a refund or replacement. For full details of the Abpromise, please visit <https://www.abcam.co.jp/abpromise> or contact our technical team.

### **Terms and conditions**

---

- Guarantee only valid for products bought direct from Abcam or one of our authorized distributors