




Anti-HP1 alpha antibody ab77256

★★★★☆ **12 Abreviews** **38 References** 画像数 3

製品の概要

製品名	Anti-HP1 alpha antibody
製品の詳細	Goat polyclonal to HP1 alpha
由来種	Goat
アプリケーション	適用あり: ICC/IF, Flow Cyt, WB
種交差性	交差種: Human 交差が予測される動物種: Rat, Cow, Dog, Rhesus monkey, Chinese hamster 
免疫原	Synthetic peptide: C-NKRKSNFSNSADDIK , corresponding to internal sequence amino acids 88-102 of Human HP1 alpha (NP_036249.1).  Run BLAST with  Run BLAST with
ポジティブ・コントロール	WB: A43N, K562 cell lysates. ICC/IF: U-2 OS cells. Flow Cyt: HeLa cells.
特記事項	<p>The Life Science industry has been in the grips of a reproducibility crisis for a number of years. Abcam is leading the way in addressing this with our range of recombinant monoclonal antibodies and knockout edited cell lines for gold-standard validation. Please check that this product meets your needs before purchasing.</p> <p>If you have any questions, special requirements or concerns, please send us an inquiry and/or contact our Support team ahead of purchase. Recommended alternatives for this product can be found below, along with publications, customer reviews and Q&As</p>

製品の特性

製品の状態	Liquid
保存方法	Shipped at 4°C. Store at +4°C short term (1-2 weeks). Upon delivery aliquot. Store at -20°C. Avoid freeze / thaw cycle.
バッファー	pH: 7.30 Preservative: 0.02% Sodium azide Constituents: 0.5% BSA, 0.5% Tris buffered saline
精製度	Immunogen affinity purified
特記事項(精製)	ab77256 is purified from goat serum by ammonium sulphate precipitation followed by antigen affinity chromatography using the immunising peptide.

ポリ/モノ
アイソタイプ

ポリクローナル
IgG

アプリケーション

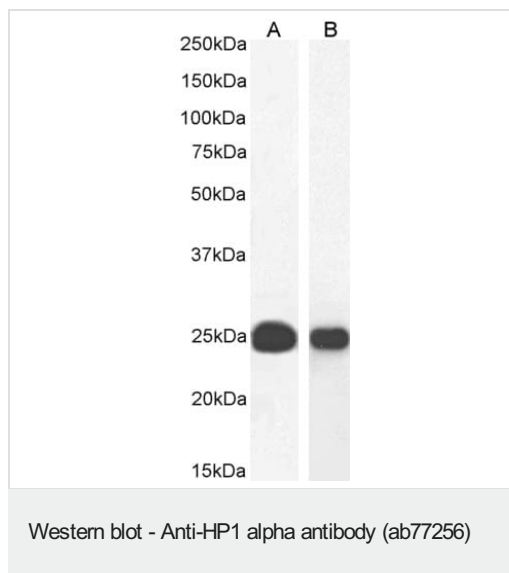
The Abpromise guarantee **Abpromise保証は、** 次のテスト済みアプリケーションにおけるab77256の使用に適用されます
アプリケーションノートには、推奨の開始希釈率がありますが、適切な希釈率につきましてはご確認ください。

アプリケーション	Abreviews	特記事項
ICC/IF	★★★★★ (4)	Use a concentration of 10 µg/ml.
Flow Cyt		Use a concentration of 10 µg/ml.
WB	★★★★★ (5)	Use a concentration of 0.03 - 0.1 µg/ml. Detects a band of approximately 22 kDa (predicted molecular weight: 22 kDa). Primary incubation 1 hour at room temperature recommended for this product.

ターゲット情報

機能	Component of heterochromatin that recognizes and binds histone H3 tails methylated at 'Lys-9' (H3K9me), leading to epigenetic repression. In contrast, it is excluded from chromatin when 'Tyr-41' of histone H3 is phosphorylated (H3Y41ph). Can interact with lamin-B receptor (LBR). This interaction can contribute to the association of the heterochromatin with the inner nuclear membrane. Involved in the formation of functional kinetochore through interaction with MIS12 complex proteins.
配列類似性	Contains 2 chromo domains.
翻訳後修飾	Phosphorylation of HP1 and LBR may be responsible for some of the alterations in chromatin organization and nuclear structure which occur at various times during the cell cycle (By similarity). Phosphorylated during interphase and possibly hyper-phosphorylated during mitosis. Ubiquitinated.
細胞内局在	Nucleus. Chromosome. Chromosome > centromere. Component of centromeric and pericentromeric heterochromatin. Associates with chromosomes during mitosis. Associates specifically with chromatin during metaphase and anaphase.

画像



All lanes : Anti-HP1 alpha antibody (ab77256) at 0.03 µg/ml

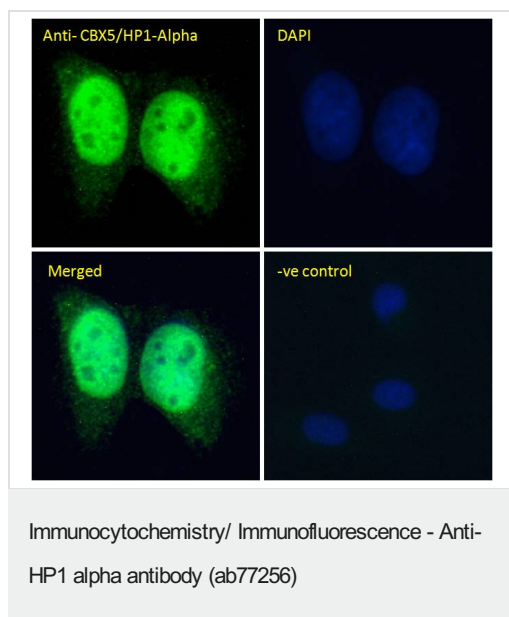
Lane 1 : A43N cell lysate

Lane 2 : K562 cell lysate

Lysates/proteins at 35 µg per lane.

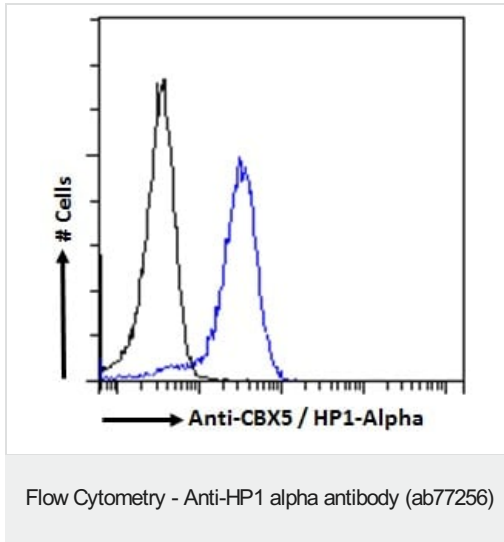
Predicted band size: 22 kDa

Observed band size: 25 kDa



Immunofluorescence analysis of paraformaldehyde fixed, 0.15% Triton permeabilized U-2 OS (Human bone osteosarcoma epithelial cell line) cells labeling HP1 alpha with ab77256 at 10ug/ml for 1hr, followed by Alexa Fluor 488 secondary antibody (4ug/ml), showing nuclear staining. The nuclear stain is DAPI (blue).

Negative control: Unimmunized goat IgG (10ug/ml) followed by Alexa Fluor 488 secondary antibody (4ug/ml).



Flow cytometric analysis HeLa cells labeling HP1 alpha with ab77256 at 10 ug/mL (blue line). Cells were fixed with paraformaldehyde fixed and permeabilized with 0.5% Triton. Alexa Fluor 488 at 2ug/mL was used as the secondary antibody. IgG control: Unimmunized goat IgG (black line) followed by Alexa Fluor 488 secondary antibody.

Please note: All products are "FOR RESEARCH USE ONLY. NOT FOR USE IN DIAGNOSTIC PROCEDURES"

Our Abpromise to you: Quality guaranteed and expert technical support

- Replacement or refund for products not performing as stated on the datasheet
- Valid for 12 months from date of delivery
- Response to your inquiry within 24 hours
- We provide support in Chinese, English, French, German, Japanese and Spanish
- Extensive multi-media technical resources to help you
- We investigate all quality concerns to ensure our products perform to the highest standards

If the product does not perform as described on this datasheet, we will offer a refund or replacement. For full details of the Abpromise, please visit <https://www.abcam.co.jp/abpromise> or contact our technical team.

Terms and conditions

- Guarantee only valid for products bought direct from Abcam or one of our authorized distributors