

Anti-HoxC6 antibody ab41587

★★★★★ [2 Abreviews](#) [11 References](#) [画像数 1](#)


製品の概要

製品名 Anti-HoxC6 antibody
製品の詳細 Rabbit polyclonal to HoxC6

① This product is a **fast track antibody**. It has been affinity purified and shows high titre values against the immunizing peptide by ELISA.

[Read the terms of use »](#)

由来種 Rabbit

種交差性 **交差種:** Human
交差が予測される動物種: Mouse, Rat 

免疫原 Synthetic peptide corresponding to Human HoxC6 aa 100-200 conjugated to keyhole limpet haemocyanin.
(Peptide available as [ab41586](#))

特記事項 The Life Science industry has been in the grips of a reproducibility crisis for a number of years. Abcam is leading the way in addressing this with our range of recombinant monoclonal antibodies and knockout edited cell lines for gold-standard validation. Please check that this product meets your needs before purchasing.

If you have any questions, special requirements or concerns, please send us an inquiry and/or contact our Support team ahead of purchase. Recommended alternatives for this product can be found below, along with publications, customer reviews and Q&As

製品の特性

製品の状態 Liquid

保存方法 Shipped at 4°C. Store at +4°C short term (1-2 weeks). Upon delivery aliquot. Store at -20°C or -80°C. Avoid freeze / thaw cycle.

バッファー pH: 7.40
Preservative: 0.02% Sodium azide
Constituent: PBS

Batches of this product that have a concentration < 1mg/ml may have BSA added as a stabilising agent. If you would like information about the formulation of a specific lot, please contact our

scientific support team who will be happy to help.

精製度

Immunogen affinity purified

ポリ/モノ

ポリクローナル

アイソタイプ

IgG

アプリケーション

Fast track antibodies constitute a diverse group of products that have been released to accelerate your research, but are not yet fully characterized. They have all been affinity purified and show high titre values against the immunizing peptide (by ELISA).

Fast track terms of use

アプリケーション	Abreviews	特記事項
IHC-P	★★★★★ (1)	1/50. Some customers have used this antibody successfully in IHC-P; however this is not a tested application for this antibody.
WB		Use at an assay dependent concentration. Predicted molecular weight: 26 kDa.

ターゲット情報

機能

Sequence-specific transcription factor which is part of a developmental regulatory system that provides cells with specific positional identities on the anterior-posterior axis.

配列類似性

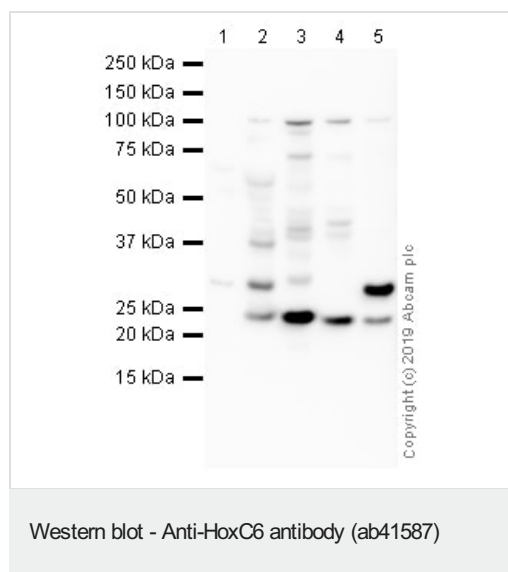
Belongs to the Antp homeobox family.
Contains 1 homeobox DNA-binding domain.

細胞内局在

Nucleus.

画像

This Fast-Track antibody is not yet fully characterised. These images represent **inconclusive preliminary data**.



All lanes : Anti-HoxC6 antibody (ab41587)

Lane 1 : Human ovary tissue lysate

Lane 2 : Human ovary tumor tissue lysate

Lane 3 : SK-N-BE cell lysate

Lane 4 : PC3 cell lysate

Lane 5 : MCF7 cell lysate

Lysates/proteins at 10 µg per lane.

Secondary

All lanes : Goat polyclonal Secondary Antibody to Rabbit IgG - H&L (HRP) at 1/50000 dilution

Developed using the ECL technique.

Performed under reducing conditions.

Predicted band size: 26 kDa

Observed band size: 25 kDa

Exposure time: 8 minutes

Please note: All products are "FOR RESEARCH USE ONLY. NOT FOR USE IN DIAGNOSTIC PROCEDURES"

Terms and conditions

- Guarantee only valid for products bought direct from Abcam or one of our authorized distributors