

# Anti-Hormone sensitive lipase/HSL antibody ab45422

★★★★★ [1 Abreviews](#) [45 References](#) [画像数 3](#)

### 製品の概要

製品名	Anti-Hormone sensitive lipase/HSL antibody
製品の詳細	Rabbit polyclonal to Hormone sensitive lipase/HSL
由来種	Rabbit
アプリケーション	<b>適用あり:</b> IHC-P, ICC/IF, WB
種交差性	<b>交差種:</b> Mouse, Rat, Human
免疫原	Synthetic peptide. This information is proprietary to Abcam and/or its suppliers.
特記事項	<p>The Life Science industry has been in the grips of a reproducibility crisis for a number of years. Abcam is leading the way in addressing this with our range of recombinant monoclonal antibodies and knockout edited cell lines for gold-standard validation. Please check that this product meets your needs before purchasing.</p> <p>If you have any questions, special requirements or concerns, please send us an inquiry and/or contact our Support team ahead of purchase. Recommended alternatives for this product can be found below, along with publications, customer reviews and Q&amp;As</p>

### 製品の特性

製品の状態	Liquid
保存方法	Shipped at 4°C. Store at +4°C.
バッファー	pH: 7.2 Preservative: 0.02% Sodium azide Constituent: PBS
精製度	Immunogen affinity purified
特記事項 (精製)	This antibody is an immunoaffinity purified IgG
ポリ/モノ	ポリクローナル
アイソタイプ	IgG

### アプリケーション

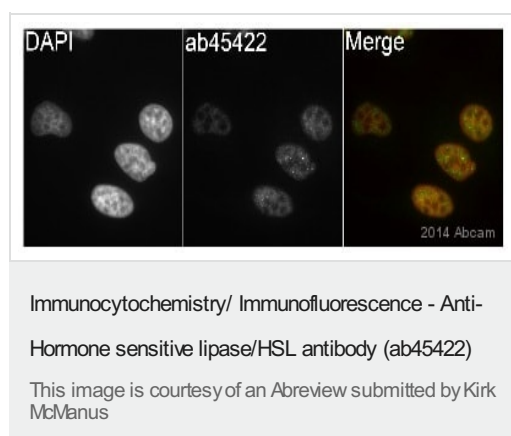
**The Abpromise guarantee**      **Abpromise保証は、** 次のテスト済みアプリケーションにおけるab45422の使用に適用されます  
アプリケーションノートには、推奨の開始希釈率がありますが、適切な希釈率につきましてはご検討ください。

アプリケーション	Abreviews	特記事項
IHC-P		Use at an assay dependent concentration.
ICC/IF	★★★★★ (1)	Use a concentration of 20 µg/ml.
WB		Use a concentration of 0.5 - 1 µg/ml. Detects a band of approximately 90 kDa (predicted molecular weight: 117 kDa).

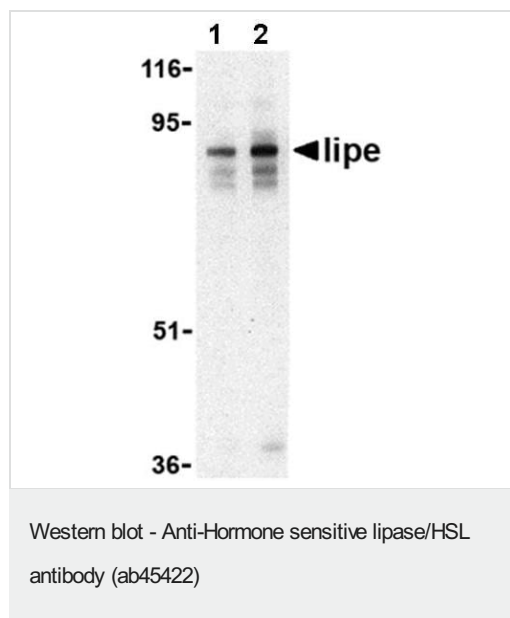
## ターゲット情報

機能	In adipose tissue and heart, it primarily hydrolyzes stored triglycerides to free fatty acids, while in steroidogenic tissues, it principally converts cholesteryl esters to free cholesterol for steroid hormone production.
パスウェイ	Glycerolipid metabolism; triacylglycerol degradation.
配列類似性	Belongs to the 'GDXG' lipolytic enzyme family.
細胞内局在	Cell membrane. Membrane > caveola. Cytoplasm > cytosol. Found in the high-density caveolae. Translocates to the cytoplasm from the caveolae upon insulin stimulation.

## 画像



ab45422 staining Hormone sensitive lipase/HSL in the HeLa cell line from Human cervical cancer by ICC/IF (Immunocytochemistry/immunofluorescence). Cells were fixed with paraformaldehyde and permeabilized with 0.5% Triton X-100 in PBS. Samples were incubated with primary antibody (1/200 in PBS) for 16 hour at 22°C. **ab150081** an Alexa Fluor®488-conjugated Goat anti-rabbit IgG H&L (1/200) polyclonal was used as the secondary antibody. Nuclei were stained with DAPI. MeOH-fixed samples were also evaluated and failed to produce the expected staining pattern.



**Lane 1 :** Anti-Hormone sensitive lipase/HSL antibody (ab45422) at 0.5 µg/ml

**Lane 2 :** Anti-Hormone sensitive lipase/HSL antibody (ab45422) at 1 µg/ml

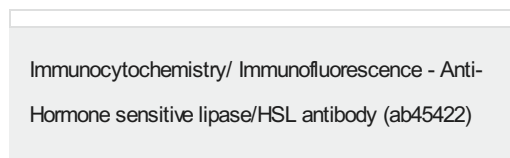
**All lanes :** Human lymph node tissue lysate

Lysates/proteins at 15 µg per lane.

**Predicted band size:** 117 kDa

**Observed band size:** 90 kDa

**Additional bands at:** 38 kDa, 86 kDa, 88 kDa. We are unsure as to the identity of these extra bands.



Immunofluorescence of Lipe in Human Lymph Node cells using ab45422 at 20 µg/ml.

**Please note:** All products are "FOR RESEARCH USE ONLY. NOT FOR USE IN DIAGNOSTIC PROCEDURES"

### Our Abpromise to you: Quality guaranteed and expert technical support

- Replacement or refund for products not performing as stated on the datasheet
- Valid for 12 months from date of delivery
- Response to your inquiry within 24 hours
- We provide support in Chinese, English, French, German, Japanese and Spanish
- Extensive multi-media technical resources to help you
- We investigate all quality concerns to ensure our products perform to the highest standards

If the product does not perform as described on this datasheet, we will offer a refund or replacement. For full details of the Abpromise, please visit <https://www.abcam.co.jp/abpromise> or contact our technical team.

### Terms and conditions

- Guarantee only valid for products bought direct from Abcam or one of our authorized distributors